

## 4 DETAILING CONSIDERATIONS

- 1 8.8/T (fully tensioned) bolt category is used, with either M20 or M24 bolt diameters.
- 2 Holes are 2 mm larger than the nominal bolt diameter.
- 3 Fabrication of this type of connection requires close control in cutting the beam to length and adequate consideration must be given to squaring the beam ends such that end plates at each end are parallel and the effect of any beam camber does not result in out-of-square end plates which make erection and field fit-up difficult. Shims may be required to compensate for mill and shop tolerances (Figure 5).

It is recommended that beams generally not be cambered with this connection since the resulting beam rotation may cause field fit-up problems (Ref. 6). If camber must be provided, the detailing must be such as to achieve parallel end plates.

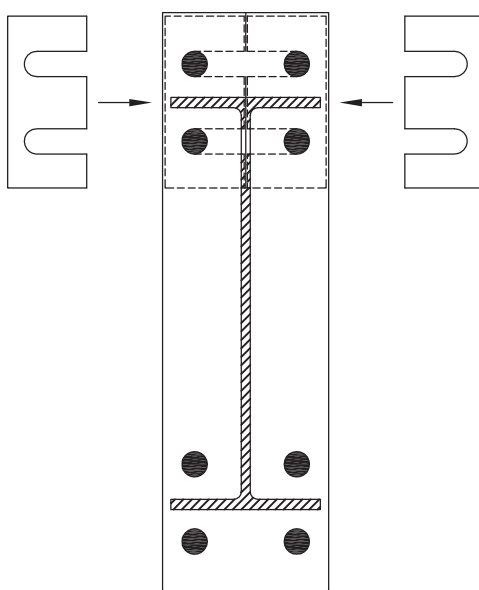


FIGURE 5 SHIMS USED BETWEEN END PLATES (after Ref. 6)

- 4 Flange butt weld preparations will require a backing strip which requires local coping of the beam web. The backing strip is usually left in place, although the structural engineer may require it to be removed for design situations involving fatigue or seismic considerations—which are not covered by the recommended design model of this design guide.
- 5 Preference should be given to the use of fillet welds rather than butt welds, at least for fillet welds up to 8 mm leg length.
- 6 A full penetration butt weld may shrink up to 2–3 mm when it cools and contracts. Such shrinkage can cause problems in erecting the frame to comply with AS 4100 tolerances. This issue is best controlled by fabricating the beam longer than required by the amount of the weld shrinkage or by increasing the weld root opening.
- 7 Lamellar tearing of the end plate may be of concern especially for a thicker end plate. The correct welding procedure and sequencing should be employed (see DESIGN GUIDE 2 for a discussion of lamellar tearing—Ref. 11).
- 8 End plates will typically be Grade 250 plate material complying with AS 3678 (Ref. 7).

## **DESIGN GUIDE 10**

# **Bolted moment end plate beam splice connections**

**by**

**T.J. Hogan**

**contributing author**

**N. van der Kreek**

**first edition—2009**



**Design Guide 10**  
**Bolted moment end plate beam splice connections**

Copyright © 2009 by AUSTRALIAN STEEL INSTITUTE

Published by: AUSTRALIAN STEEL INSTITUTE

All rights reserved. This book or any part thereof must not be reproduced in any form without the written permission of Australian Steel Institute.

*Note to commercial software developers: Copyright of the information contained within this publication is held by Australian Steel Institute (ASI). Written permission must be obtained from ASI for the use of any information contained herein which is subsequently used in any commercially available software package.*

FIRST EDITION 2009 (LIMIT STATES)

National Library of Australia Cataloguing-in-Publication entry:

Hogan, T.J.

Design Guide 10: Bolted moment end plate beam splice connections

1<sup>st</sup> ed.

Bibliography.

ISBN 978 1 921476 10 5 (pbk.).

ISBN 978 1 921476 11 2 (pdf.).

1. Steel, Structural—Standards – Australia.
2. Steel, Structural—Specifications – Australia.
3. Joints, (Engineering)—Design and construction.
  - I. van der Kreek, N.
  - II. Australian Steel Institute.
  - III. Title

(Series: Structural steel connection series).

This publication originated as part of  
Design of structural connections  
First edition 1978  
Second edition 1981  
Third edition 1988  
Fourth edition 1994

Also in this series:

Handbook 1: Design of structural steel connections  
Design Guide 1: Bolting in structural steel connections  
Design Guide 2: Welding in structural steel connections  
Design Guide 3: Web side plate connections  
Design Guide 4: Flexible end plate connections  
Design Guide 5: Angle cleat connections  
Design Guide 6: Seated connections  
Design Guide 11: Welded beam to column moment connections  
Design Guide 12: Bolted end plate beam to column moment connections  
Design Guide 13: Splice connections

**Disclaimer:** The information presented by the Australian Steel Institute in this publication has been prepared for general information only and does not in any way constitute recommendations or professional advice. While every effort has been made and all reasonable care taken to ensure the accuracy of the information contained in this publication, this information should not be used or relied upon for any specific application without investigation and verification as to its accuracy, suitability and applicability by a competent professional person in this regard. The Australian Steel Institute, its officers and employees and the authors of this publication do not give any warranties or make any representations in relation to the information provided herein and to the extent permitted by law (a) will not be held liable or responsible in any way; and (b) expressly disclaim any liability or responsibility for any loss or damage costs or expenses incurred in connection with this publication by any person, whether that person is the purchaser of this publication or not. Without limitation, this includes loss, damage, costs and expenses incurred as a result of the negligence of the authors, editors or publishers.

The information in this publication should not be relied upon as a substitute for independent due diligence, professional or legal advice and in this regards the services of a competent professional person or persons should be sought.



## CONTENTS

	<i>Page</i>		<i>Page</i>
List of figures	iv	9.5 DESIGN CHECK NO. 5—Design capacity of bolts in shear	26
List of tables	v	9.6 DESIGN CHECK NO. 6—Design capacity of end plate at tension flange	27
Preface	vi	9.7 DESIGN CHECK NO. 7—Design capacity of end plate in shear	31
About the author	vii	9.8 DESIGN CHECK NO. 8—Design requirements for stiffener to end plate	32
About the contributing author	vii	9.9 DESIGN CHECK NO. 9—Design capacity of stiffener welds to end plate	33
Acknowledgements	viii	10 DESIGN EXAMPLES	34
1 CONCEPT OF DESIGN GUIDES.....	1	10.1 Design example No. 1—Four bolt unstiffened end plate beam splice	34
1.1 Background	1	10.2 Design example No. 2—Four bolt stiffened apex connection	37
2 DESCRIPTION OF CONNECTION .....	2	11 REFERENCES.....	41
3 TYPICAL DETAILING OF CONNECTION ..	4	12 DESIGN CAPACITY TABLES .....	42
4 DETAILING CONSIDERATIONS.....	6	12.1 Four bolt unstiffened end plate	43
5 AS 4100 REQUIREMENTS .....	8	12.2 Four bolt stiffened end plate	45
6 BASIS OF DESIGN MODEL.....	9	12.3 Six bolt unstiffened end plate	47
7 CALCULATION OF DESIGN ACTIONS ...	11	12.4 Eight bolt stiffened end plate	49
8 RECOMMENDED DESIGN MODEL—SUMMARY OF DESIGN CHECKS.....	17	APPENDICES	
9 RECOMMENDED DESIGN MODEL.....	20	A Thick and thin end plate behaviour	50
9.1 DESIGN CHECK NO. 1—Detailing requirements	20	B Limcon software	52
9.2 DESIGN CHECK NO. 2—Design capacity of welds to beam flanges	22	C ASI Design Guide 10 comment form	59
9.3 DESIGN CHECK NO. 3—Design capacity of welds to beam web	23		
9.4 DESIGN CHECK NO. 4—Design capacity of bolts at tension flange	25		



## LIST OF FIGURES

	<i>Page</i>		<i>Page</i>
Figure 1	Bolted moment end plate beam splice connection ..... 2	Figure 15	Notation used for 6 bolt (2/4) unstiffened end plate ..... 19
Figure 2	Forms of extended bolted end plate connection ..... 3	Figure 16	Notation used for 8 bolt (2/6) unstiffened end plate ..... 19
Figure 3	Typical detailing for unstiffened variations of extended bolted moment end plate ..... 4	Figure 17	Clearance dimensions $a_f$ , $a_e$ , $s_{po}$ ..... 21
Figure 4	Typical detailing for stiffened variations of extended bolted moment end plate ..... 5	Figure 18	End plate stiffener detailing ..... 21
Figure 5	Shims used between end plates ..... 6	Figure 19	Flange weld design actions ..... 22
Figure 6	Clearance required for tensioning bolts ..... 7	Figure 20	Web weld design actions ..... 24
Figure 7	Design actions at connection ..... 11	Figure 21	Yield line pattern 4 bolt (2/2) unstiffened end plate ..... 27
Figure 8	Calculation of flange force due to bending moment and axial force—Horizontal beam ..... 12	Figure 22	Yield line pattern 4 bolt (2/2) stiffened end plate ..... 28
Figure 9	Calculation of force components—Apex connection ..... 13	Figure 23	Yield line pattern 6 bolt (2/4) unstiffened end plate ..... 29
Figure 10	Calculation of force components—Mitred knee connection ..... 14	Figure 24	Yield line pattern 8 bolt (2/6) unstiffened end plate ..... 29
Figure 11	Alternative stress distributions in beam ..... 15	Figure 25	Yield line pattern 8 bolt (4/4) stiffened end plate ..... 30
Figure 12	Notation used for 4 bolt (2/2) unstiffened end plate ..... 18	Figure 26	Beam splice example no. 1 ..... 34
Figure 13	Notation used for 4 bolt (2/2) stiffened end plate ..... 18	Figure 27	Stress distribution in beam of example no. 1 ..... 35
Figure 14	Notation used for 8 bolt (4/4) stiffened end plate ..... 18	Figure 28	Apex end plate example no. 2 ..... 37
		Figure 29	Stress distribution in rafter for example no. 2 ..... 38
		Figure 30	Stiffener detailing example no. 2 .... 40
		Figure 31	End plate behaviour idealisation ..... 50



## LIST OF TABLES

		<i>Page</i>			<i>Page</i>
Table 1	Range of tested parameters (Ref. 6) .....	10	Table 9	Design moment capacity of connection $\phi M_{conn}$ —Four bolt stiffened end plate M20 bolts 8.8/TB category threads excluded from shear plane—Universal beam sections > 200 mm deep .....	46
Table 2	Equations to be applied for different configurations and connection elements.....	16	Table 10	Design moment capacity of connection $\phi M_{conn}$ —Six bolt unstiffened end plate M24 bolts 8.8/TB category threads excluded from shear plane—Welded beam/Universal beam sections > 450 mm deep .....	47
Table 3	Recommended limits on detailing parameters .....	20	Table 11	Design moment capacity of connection $\phi M_{conn}$ —Six bolt unstiffened end plate M20 bolts 8.8/TB category threads excluded from shear plane—Universal beam sections > 350 mm deep .....	48
Table 4	Strength of plate to AS 3678 Grade 250 .....	28	Table 12	Design moment capacity of connection $\phi M_{conn}$ —Eight bolt stiffened end plate M24 bolts 8.8/TB category threads excluded from shear plane—Welded beam and universal beam sections > 520 mm deep .....	49
Table 5	Strength of flat bars to AS 3679.1 Grade 300 .....	32			
Table 6	Design moment capacity of connection $\phi M_{conn}$ —Four bolt unstiffened end plate M24 bolts 8.8/TB category threads excluded from shear plane—Welded beam/Universal beam sections > 300 mm deep .....	43			
Table 7	Design moment capacity of connection $\phi M_{conn}$ —Four bolt unstiffened end plate M20 bolts 8.8/TB category threads excluded from shear plane—Universal beam sections > 200 mm deep.....	44			
Table 8	Design moment capacity of connection $\phi M_{conn}$ —Four bolt stiffened end plate M24 bolts 8.8/TB category threads excluded from shear plane—Welded beam/Universal beam sections > 300 mm deep .....	45			

