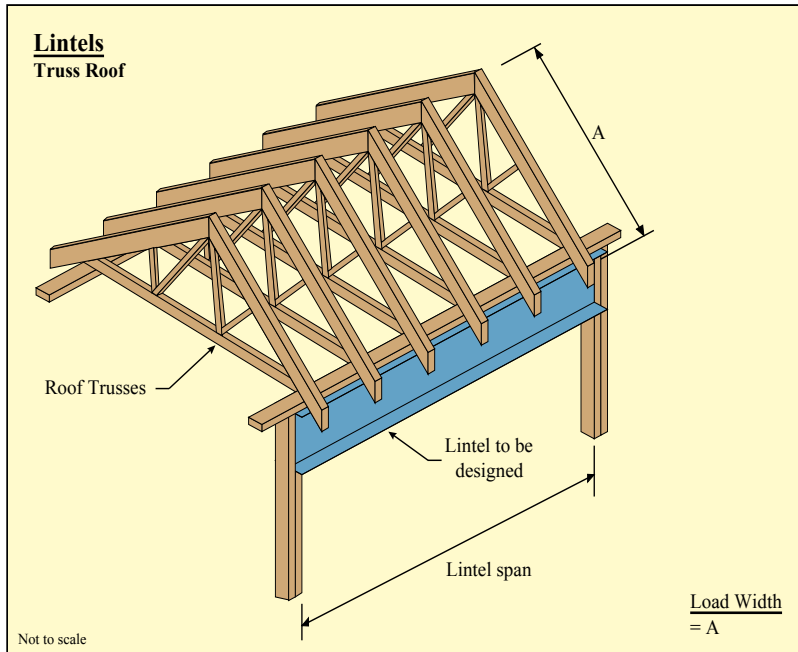


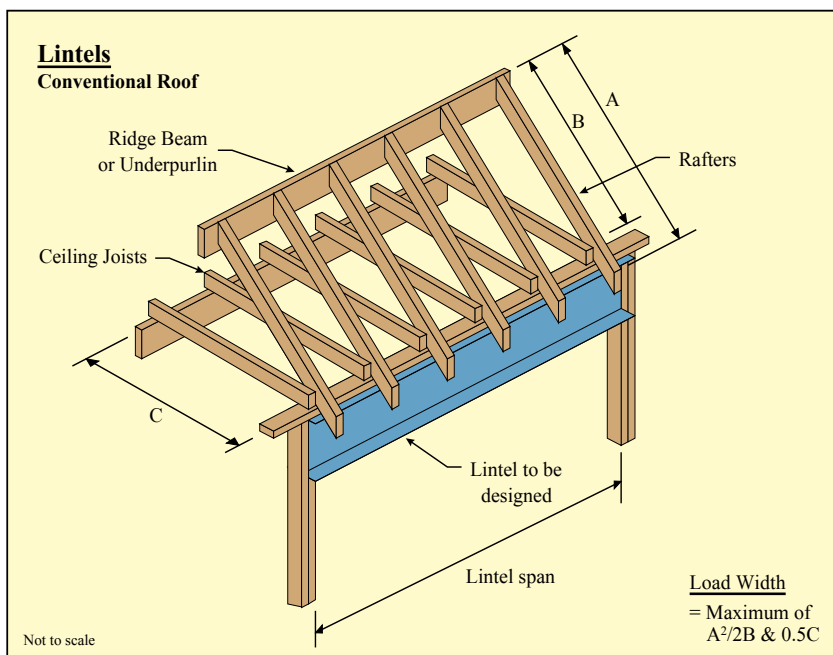
LINTELS SUPPORTING ROOF

	Load (kg/m ²)		Deflection Limit (mm)	
	Dead Load	Live Load	Dead & Live Load	Live Load
Lintel supporting a steel sheet roof & ceiling	40	25 (or $\geq 180/\text{Area} + 12$)	span/240 to 15	span/360 to 10
Lintel supporting tiled roof & ceiling	90	25 (or $\geq 180/\text{Area} + 12$)	span/240 to 15	span/360 to 10



Notes:

1. Attention should be given to the load carrying capacity of the timber studs or steel columns that support the Lintel.
2. The top flange of Lintel is assumed to be continuously laterally supported by trusses spaced at 900mm maximum centres. Angles must also be prevented from twisting.



Notes:

1. If A is much greater than C or vice versa, then the Lintel selection from the table will be conservative.
2. Attention should be given to the load carrying capacity of the timber studs or steel columns that support the Lintel.
3. The top flange of the Lintel is assumed to be continuously laterally supported by joists and rafters spaced at 900mm maximum centres. Angles must also be prevented from twisting.

LINTEL SUPPORTING A STEEL SHEET ROOF AND CEILING - NORMAL WIND N3

Section Designation	Load Width (m)						
	1.2	1.8	2.4	3.0	3.6	4.8	
	MAXIMUM SPAN OF LINTEL (m)						
100TFB	3.7	3.2	2.9	2.7*	2.5*	2.3*	2.1*
125TFB	5.7	5.1*	4.6*	4.2*	4.0*	3.6*	3.3*
150UB14.0	6.1	5.2*	4.7*	4.4*	4.1*	3.7*	3.4*
• 150UB18.0	6.8	6.2	5.6*	5.2*	4.9*	4.4*	4.0*
180UB16.1	6.8*	5.9*	5.4*	5.0*	4.7*	4.2*	3.9*
180UB18.1		6.4*	5.8*	5.3*	5.0*	4.5*	4.2*
• 180UB22.2		7.2*	6.6*	6.1*	5.7*	5.1*	4.7*
200UB18.2		6.5*	5.9*	5.4*	5.1*	4.6*	4.3*
200UB22.3		7.8*	7.1*	6.5*	6.1*	5.6*	5.2+
200UB25.4		8.0*	7.5*	7.0*	6.5*	5.9*	5.5+
• 200UB29.8		8.4*	7.9*	7.5*	7.2*	6.6+	6.1+
250UB25.7		8.3*	7.5*	6.9*	6.5*	5.9*	5.5+
250UB31.4			8.7*	8.0*	7.5*	6.8+	6.3+
250UB37.3			9.2*	8.8*	8.5+	7.7+	
75PFC	3.5	3.1	2.8	2.6*	2.4*	2.2*	2.0*
100PFC	4.5	4.0	3.6*	3.3*	3.1*	2.8*	2.5*
125PFC	5.6	5.2*	4.7*	4.3*	4.0*	3.6*	3.3*
150PFC		6.2*	5.9*	5.6*	5.2*	4.7*	4.3*
180PFC		7.1*	6.7*	6.2*	5.8*	5.2*	4.8+
200PFC		7.6*	7.1*	6.6*	6.2*	5.5*	5.1+
230PFC		8.2*	7.4*	6.8*	6.4*	5.8*	5.3+
250PFC				8.4*	8.0*	7.4+	6.8+
75 x 75 x 5EA	2.8	2.5	2.3	2.1	1.9	1.6	
90 x 90 x 6EA	3.7	3.4	3.2	2.9*	2.6*	2.3*	
100 x 75 x 6UA	3.9	3.7	3.4*	3.0*	2.7*	2.4*	
100 x 100 x 6EA	4.0	3.8	3.5*	3.2*	2.9*	2.5*	
125 x 75 x 6UA	4.6	4.3*	4.0*	3.1*	3.2*	2.8*	
150 x 90 x 8UA	5.7	5.3*	5.0*	3.6*	4.6*	3.9*	
150 x 100 x 10UA	6.0	5.6*	5.3*	5.0*	4.9*	4.5*	

Example:
Refer to Fig. page 12
Lintel Span=4.6m, trussed roof
A=4.7m
Load width=A
=4.7m
Use a load width of 4.8 in
the adjacent table a 200UB18.2
will span 4.6m and requires a
M10 anchor rod.

LINTEL SUPPORTING A TILED ROOF AND CEILING - NORMAL WIND N3

Section Designation	Load Width (m)						
	1.2	1.8	2.4	3.0	3.6	4.8	
	MAXIMUM SPAN OF LINTEL (m)						
100TFB	3.8	3.4	3.2	3.0	2.8	2.4*	2.2*
125TFB	5.0	4.6	4.3	4.1*	3.9*	3.7*	3.4*
150UB14.0	5.6	5.1	4.8*	4.6*	4.4*	4.1*	3.9*
• 150UB18.0	6.0	5.5	5.2*	4.9*	4.7*	4.4*	4.2*
180UB16.1	6.3	5.8	5.4*	5.1*	4.9*	4.6*	4.3*
180UB18.1	6.5	5.9	5.6*	5.3*	5.1*	4.7*	4.5*
• 180UB22.2	6.8	6.3	5.9*	5.6*	5.4*	5.0*	4.7*
200UB18.2	6.9	6.4	6.0*	5.7*	5.4*	5.1*	4.8*
200UB22.3	7.4	6.8*	6.4*	6.1*	5.8*	5.4*	5.1*
200UB25.4	7.6	7.0*	6.6*	6.2*	6.0*	5.6*	5.3*
• 200UB29.8	8.0	7.4*	6.9*	6.6*	6.3*	5.9*	5.6*
250UB25.7	8.4	7.8*	7.3*	6.9*	6.6*	6.2*	5.9*
250UB31.4		8.2*	7.7*	7.3*	7.0*	6.5*	6.2*
250UB37.3		8.6*	8.1*	7.7*	7.4*	6.9*	6.5*
75PFC	2.9	2.6	2.4	2.3	2.1	2.0	1.8*
100PFC	3.9	3.6	3.4	3.1	3.0	2.7*	2.5*
125PFC	4.9	4.5	4.2	4.0*	3.8*	3.6*	3.3*
150PFC	5.9	5.4	5.1*	4.8*	4.6*	4.3*	4.1*
180PFC	6.7	6.2	5.8*	5.5*	5.3*	4.9*	4.7*
200PFC	7.2	6.6*	6.2*	5.9*	5.7*	5.3*	5.0*
230PFC	7.8	7.2*	6.8*	6.4*	6.2*	5.8*	5.5*
250PFC		8.2*	7.7*	7.3*	7.0*	6.5*	6.2*
75 x 75 x 5EA	2.3	2.1	1.9	1.7	1.6	1.4	
90 x 90 x 6EA	3.1	2.8	2.6	2.4	2.2	1.9	
100 x 75 x 6UA	3.4	3.1	2.8	2.5	2.3	2.0	
100 x 100 x 6EA	3.5	3.2	2.9	2.7	2.4	2.1	
125 x 75 x 6UA	4.1	3.8	3.5	3.2	2.8	2.5*	
150 x 90 x 8UA	5.0	4.6	4.3	4.1*	4.0*	3.5*	
150 x 100 x 10UA	5.3	4.8	4.6	4.3*	4.2*	3.9*	

Example:
Refer to Fig. page 12
Lintel Span=4.6m,
conventional roof
A=3.9m
B=3.0m, C=4.5m
Load width=A²/(2B)
=3.9²/(2x3.0)
=2.5m
Use a load width of 3.0
in the adjacent table a 150UB14.0
will span 4.6m and requires a
M10 anchor rod.

Notes on Tables:

- The tables apply for 300PLUS[®] steel only. For details of your nearest 300PLUS[®] structural steel supplier, call OneSteel Direct toll free on 1800 1 STEEL (1800 1 78335), or visit our website www.onesteel.com
- For angle lintels, the first dimension corresponds to the vertical lintel leg, eg for 100x75x6UA, 100mm leg is vertical.
- For sections marked '•' the next largest size may be more economical.
- No symbol next to the span indicates that only nominal holding down is required (uplift is less than 5 kN).
A "*" indicates a M10 holding down rod is required (uplift is between 5 and 19 kN).
A "+" indicates a M12 holding down bolt is required (uplift is between 19 and 27 kN).
- For a steel sheet roof in high wind load areas refer to the table on page 21.



STRUCTURAL STEEL IN HOUSING - THIRD EDITION



Structural steel is playing an increasingly important role in traditional and medium density housing with its versatility, strength and competitive price.

OneSteel produces a unique range of steel beams, columns, channels and angles which are suitable for use in domestic housing as floor bearers, joists, roof strutting beams, lintels, piling and other applications.

This booklet has been compiled to assist builders, draftspersons and designers to specify and use OneSteel's range of structural steel. It contains span tables, surface treatment specifications and installation details on the use of OneSteel's structural steel products in various residential building applications.

CONTENTS

Benefits of OneSteel's Structural Steel.....	1
Product Description and Range.....	2
Span Table Design Data.....	4
Letter of Certification.....	5
Bearers	6
Strutting Beams.....	8
Strutting/Hanging Beams	10
Lintels Supporting Roof	12
Lintels Supporting Roof and Floor.....	14
Lintels Supporting Strutting Beam	16
Verandah Beams.....	18
Steel Sheet Roofs in High Wind Areas	20
Lintels Supporting Masonry	22
Connection Examples	24
Surface Treatment.....	26
Other Publications.....	28



personalise your experience

My Needs. My Solutions. MyOneSteel.

STEEL ADVICE AROUND THE CLOCK

If you're looking for **advice on steel**, then at OneSteel's website you'll find everything from A to Z, covering the **largest range of steel products and services**, technical information, design aids, case studies, shareholder information, where your steel suppliers are, and much more, it's **your 24 Hour reference**.

FULLY PERSONALISED FOR YOUR NEEDS

MyOneSteel is one of the latest enhancements to the OneSteel website. The new design allows for each user to register and then personalise a homepage to suit their interests. This allows **faster access to the information you want**, without the things you don't need by selecting your products, your news – **everything that matters to you and for your business**.

FRECALL 1800 178 335 WEBSITE www.onesteel.com EMAIL onesteeldirect@onesteel.com



onesteel
market mills

www.onesteel.com



onesteel
market mills

ONESTEEL DIRECT

Freecall 1800 178 335

Website www.onesteel.com

Freefax 1800 101 141

Email onesteeldirect@onesteel.com

Postal address

Locked Bag 8825

Wollongong DC

NSW 2500 Australia

DISTRIBUTED BY

This publication has been prepared by OneSteel Market Mills which OneSteel Manufacturing Pty Limited ABN 42 004 651 325 is a part. Please note that any specifications or technical data referred to in this publication are subject to change and/or variation or improvement without notice and no warranty as to their suitability for any use is made. Users of this publication - to ensure accuracy and adequacy for their purposes - are requested to check the information provided in this publication to satisfy themselves as to its appropriateness and not to rely on the information without first doing so. Unless required by law, the company cannot accept any responsibility for any loss, damage or consequence resulting from the use of this publication. This publication is not an offer to trade and shall not form any part of the trading terms in any transaction. © Copyright 2003-2006. Issue 6. Printed March 2006. BC0379. Registered Trademarks of OneSteel Manufacturing Pty Limited ABN 42 004 651 325: 300PLUS®.

9 320075 046118

