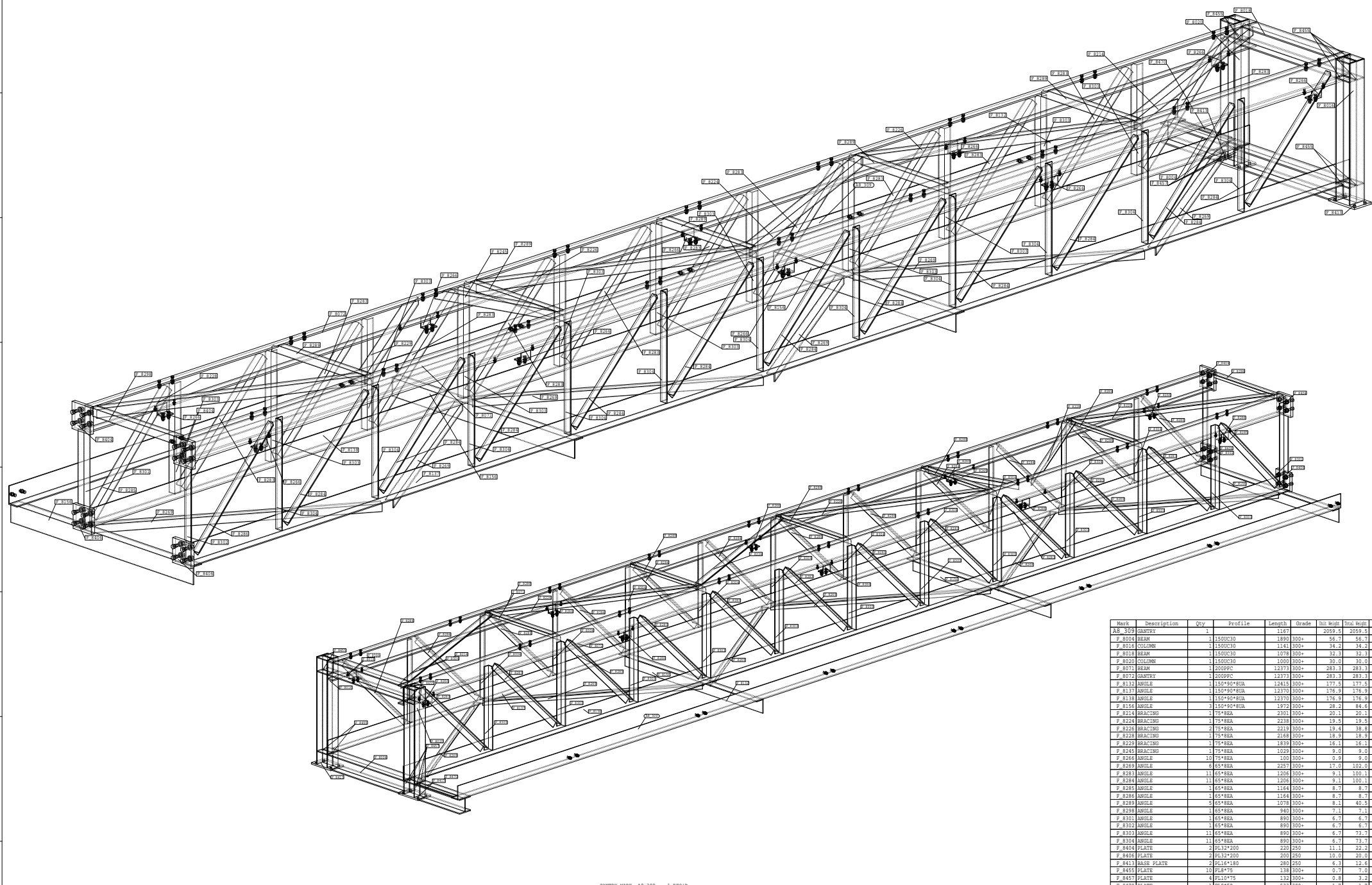


B1 ▼ INDICATES LOCATION OF MARK NUMBER FOR ORIENTATION



GANTRY MARK AB\_309 - 1 REQ'D

Mark	Description	Qty	Profile	Length	Grade	Thk Wght	Tot. Wght	Rev
AB_309	GANTRY	1		1247		2059.0	2059.0	0
F_8004	BEAM	1	1500C30	1890	300+	56.7	95.7	0
F_8016	COLUMN	1	1500C30	1141	300+	34.0	34.0	0
F_8018	BEAM	1	1500C30	1078	300+	32.0	32.0	0
F_8020	COLUMN	1	1500C30	1000	300+	30.0	30.0	0
F_8071	BEAM	1	200PPC	12373	300+	283.3	283.3	0
F_8072	GANTRY	1	200PPC	12373	300+	283.3	283.3	0
F_8132	ANGLE	1	150*90*8USA	12415	300+	177.0	177.0	0
F_8137	ANGLE	1	150*90*8USA	12370	300+	176.9	176.9	0
F_8138	ANGLE	1	150*90*8USA	12370	300+	176.9	176.9	0
F_8156	ANGLE	3	150*90*8USA	1972	300+	28.2	84.6	0
F_8224	BRACING	1	75*8EA	2301	300+	20.1	20.1	0
F_8226	BRACING	1	75*8EA	2238	300+	18.9	18.9	0
F_8228	BRACING	2	75*8EA	2215	300+	19.4	38.8	0
F_8229	BRACING	1	75*8EA	2168	300+	18.9	18.9	0
F_8249	BRACING	1	75*8EA	1839	300+	16.1	16.1	0
F_8249	BRACING	1	75*8EA	1029	300+	9.0	9.0	0
F_8264	ANGLE	1	75*8EA	100	300+	0.9	0.9	0
F_8265	ANGLE	6	65*8EA	2257	300+	17.0	102.0	0
F_8283	ANGLE	11	65*8EA	1208	300+	9.1	100.1	0
F_8284	ANGLE	11	65*8EA	1205	300+	9.1	100.1	0
F_8285	ANGLE	1	65*8EA	1164	300+	8.7	8.7	0
F_8286	ANGLE	1	65*8EA	1164	300+	8.7	8.7	0
F_8298	ANGLE	5	65*8EA	1078	300+	8.1	40.5	0
F_8298	ANGLE	1	65*8EA	940	300+	7.1	7.1	0
F_8301	ANGLE	1	65*8EA	890	300+	6.7	6.7	0
F_8302	ANGLE	1	65*8EA	890	300+	6.7	6.7	0
F_8303	ANGLE	11	65*8EA	890	300+	6.7	73.7	0
F_8304	ANGLE	11	65*8EA	890	300+	6.7	73.7	0
F_8404	PLATE	2	PL32*200	220	250	11.1	22.2	0
F_8406	PLATE	2	PL32*200	200	250	10.0	20.0	0
F_8443	HAKE PLATE	2	PL1*180	280	250	6.0	12.0	0
F_8455	PLATE	10	PL8*75	138	300+	0.7	7.0	0
F_8457	PLATE	4	PL10*75	132	300+	0.8	3.2	0
F_8470	PLATE	1	PL8*50	533	300+	1.7	1.7	0

<p>GENERAL NOTES</p> <ol style="list-style-type: none"> <li>ALL DIMENSIONS ARE IN mm. U.N.O.</li> <li>FLAME CUT SURFACES TO BE UNIFORM AND CLEAN BEFORE WELDING</li> <li>ALL FILLET WELDS TO BE 6 mm CONTINUOUS U.N.O.</li> <li>ALL FILLETS TO BE A MINIMUM OF 11 mm U.N.O.</li> <li>ALL ASSEMBLIES TO BE CLEARLY MARKED.</li> <li>ALL MATERIAL TO BE TO A.S. 4100.</li> <li>FOR SURFACE TREATMENT REFER TO PAINT SPECIFICATIONS</li> <li>ALL WORKSMANSHIP &amp; WELDING SHALL BE IN ACCORDANCE WITH AS 4100 &amp; AS 1554 PART 1 CAT. 02</li> </ol>		<p>DATE: 31.08.2006</p> <p>BY: M.BAJOREK</p> <p>CHK: [Signature]</p>	<p>SCALE: NTS</p> <p>PROJ: LIFESP ENGINEERING</p> <p>CLIENT: LIFESP ENGINEERING</p> <p>PROJECT: BARTLEY QUARRY CONVEYOR C8</p> <p>REF: REFER TO 800 SERIES</p> <p>DATE: 31.08.2006</p> <p>BY: [Signature]</p> <p>CHK: [Signature]</p>	<p>NO. 110</p> <p>15 JUNCTION STREET</p> <p>ARMOUR NSW 2144</p> <p>PH. (02) 9748 0444</p> <p>FAX: (02) 9648 3984</p> <p>enterprise   drafting   company</p> <p>141 King Street Newcastle NSW 2056</p>	<p>DATE: 31.08.2006</p> <p>BY: [Signature]</p> <p>CHK: [Signature]</p> <p>DATE: 31.08.2006</p> <p>BY: [Signature]</p> <p>CHK: [Signature]</p>	<p>NO. 110</p> <p>15 JUNCTION STREET</p> <p>ARMOUR NSW 2144</p> <p>PH. (02) 9748 0444</p> <p>FAX: (02) 9648 3984</p> <p>enterprise   drafting   company</p> <p>141 King Street Newcastle NSW 2056</p>
<p>ISSUED FOR APPROVAL &amp; THEN FOR CONSTRUCTION</p>		<p>DATE: 31.08.2006</p> <p>BY: M.BAJOREK</p>	<p>SCALE: NTS</p> <p>PROJ: LIFESP ENGINEERING</p> <p>CLIENT: LIFESP ENGINEERING</p> <p>PROJECT: BARTLEY QUARRY CONVEYOR C8</p> <p>REF: REFER TO 800 SERIES</p> <p>DATE: 31.08.2006</p> <p>BY: [Signature]</p> <p>CHK: [Signature]</p>	<p>NO. 110</p> <p>15 JUNCTION STREET</p> <p>ARMOUR NSW 2144</p> <p>PH. (02) 9748 0444</p> <p>FAX: (02) 9648 3984</p> <p>enterprise   drafting   company</p> <p>141 King Street Newcastle NSW 2056</p>	<p>DATE: 31.08.2006</p> <p>BY: [Signature]</p> <p>CHK: [Signature]</p> <p>DATE: 31.08.2006</p> <p>BY: [Signature]</p> <p>CHK: [Signature]</p>	<p>NO. 110</p> <p>15 JUNCTION STREET</p> <p>ARMOUR NSW 2144</p> <p>PH. (02) 9748 0444</p> <p>FAX: (02) 9648 3984</p> <p>enterprise   drafting   company</p> <p>141 King Street Newcastle NSW 2056</p>





THIS SCALE FULL SIZE ON ORIGINAL DRAWING  
240 MILLIMETRES  
220  
200  
180  
160  
140  
120  
100  
80  
60  
40  
20  
0

1 2 3 4 5 6 7 8 9 10 11 12

A

B

C

D

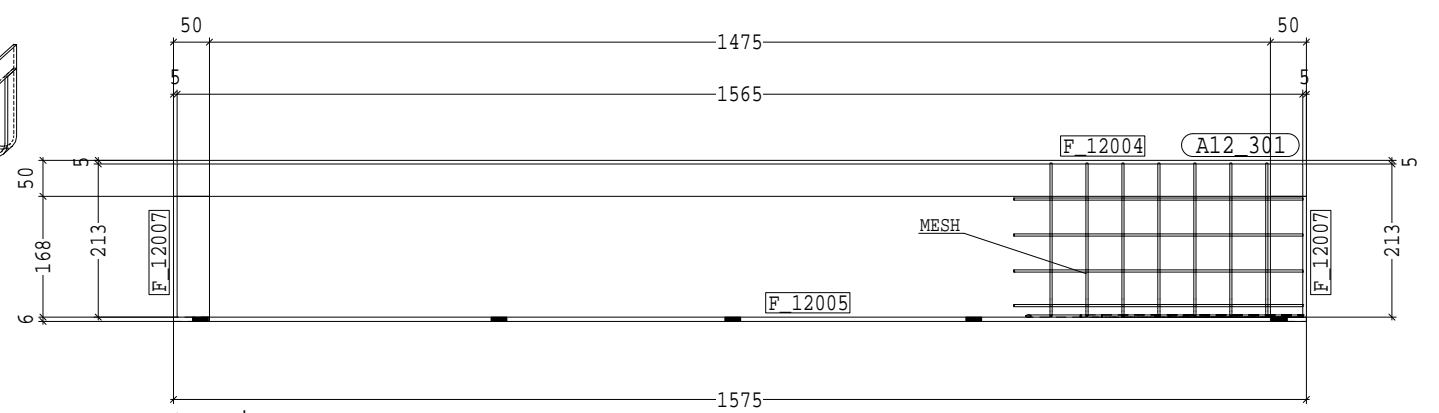
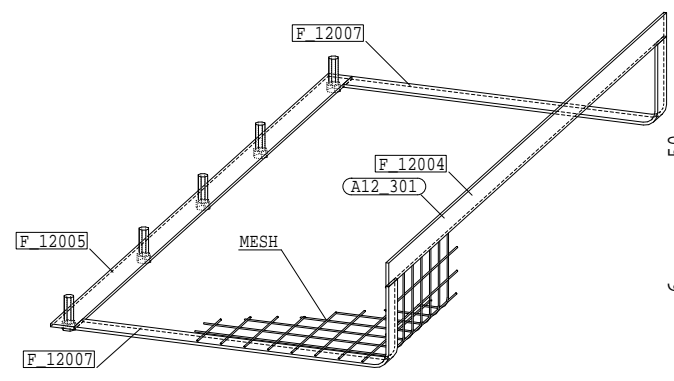
E

F

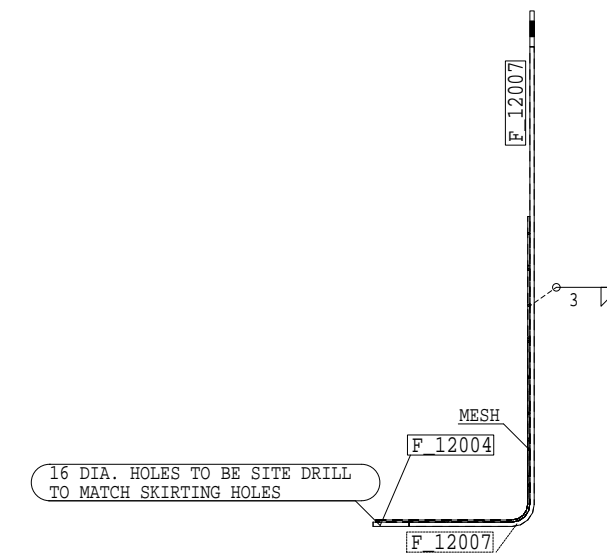
G

H

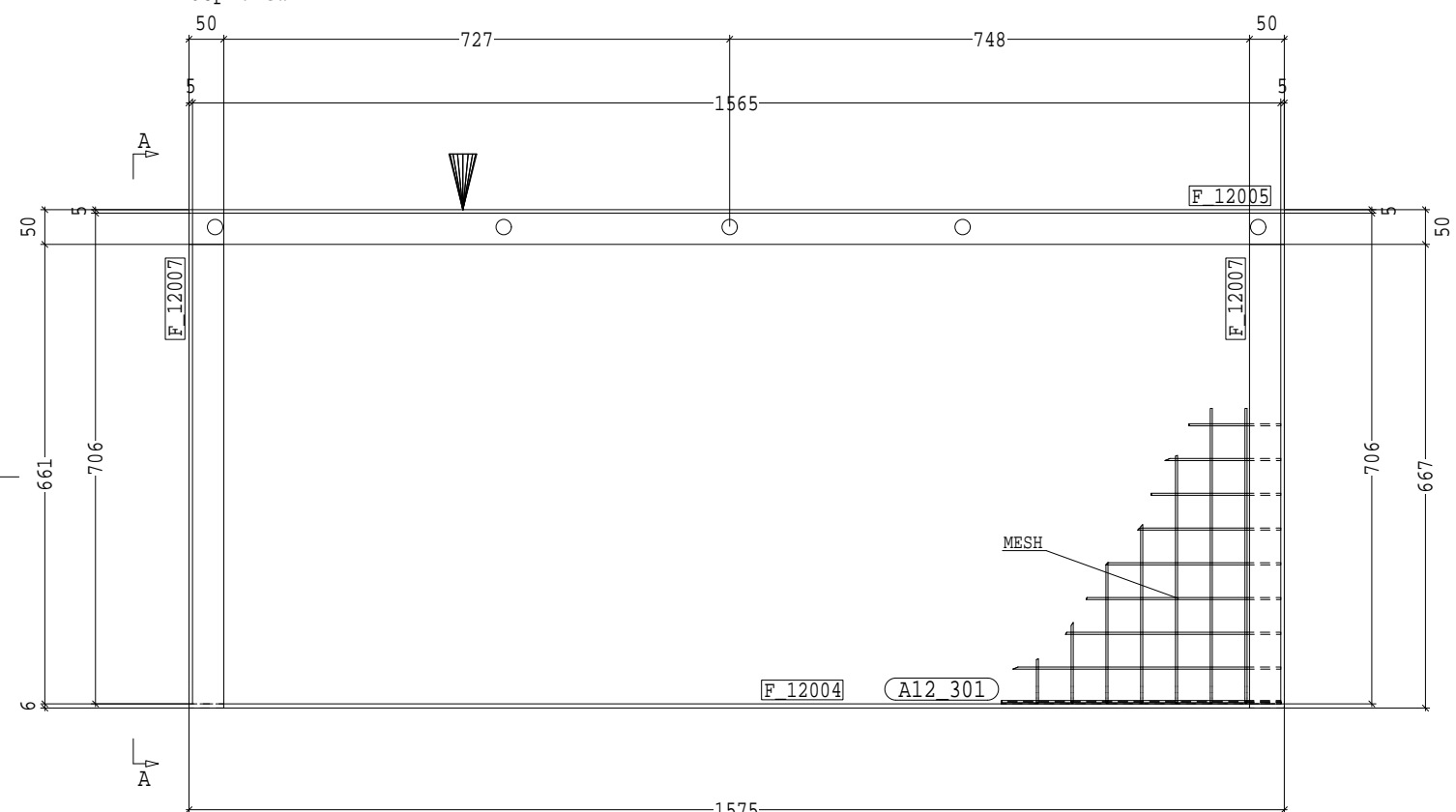
B1 ▼ INDICATES LOCATION OF MARK NUMBER FOR ORIENTATION



top view



view from left, A-A



front view

### GUARD MARK A12\_301 - 2 REQ'D

Mark	Description	Qty	Profile	Length	Grade	Thk	Weight	Total Weight	Rev	
A12_301	GUARD	2	FL6*50	1575	300+	3.7	22.6	0	0	
F_12004	GUARD	2	FL6*50	1575	300+	3.7	7.4	0	0	
F_12005	GUARD	2	FL6*50	1575	300+	3.7	7.4	0	0	
F_12007	GUARD	4	FL6*50	818	300+	1.0	5.6	0	0	
SHIPPING DIMENSIONS				1575*224*757			11.3	22.6		

REV	ISSUED FOR APPROVAL & THEN FOR CONSTRUCTION	DATE	BY	DATE	BY	DATE	BY
0							
1							

**GENERAL NOTES**  
 1. ALL DIMENSIONS ARE IN mm. U.N.O.  
 2. FLAME CUT SURFACES TO BE UNIFORM AND CLEAN BEFORE WELDING  
 3. ALL FILLET WELDS TO BE 6 mm CONTINUOUS U.N.O.  
 4. ALL FILLETS TO BE A MINIMUM OF 11 rad. U.N.O.  
 5. ALL ASSEMBLIES TO BE CLEARLY MARKED.  
 6. ALL MATERIAL TO BE TO A.S. 4100.  
 7. FOR SURFACE TREATMENT REFER TO PAINT SPECIFICATIONS  
 8. ALL WORKMANSHIP & WELDING SHALL BE IN ACCORDANCE WITH AS 4100 & AS 1554 PART 1 CAT. 02

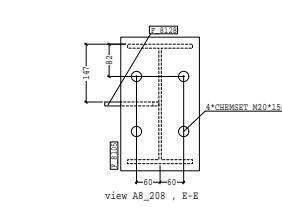
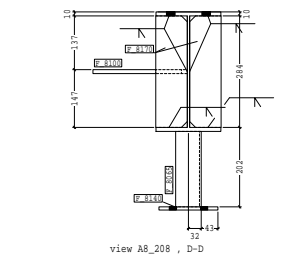
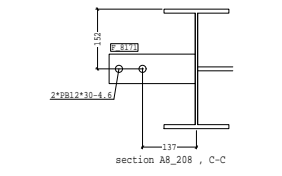
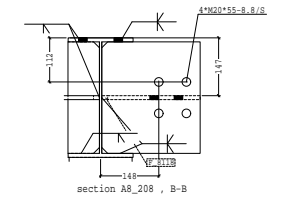
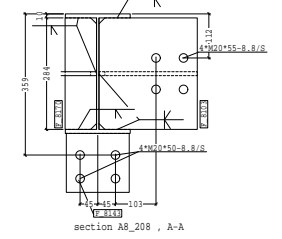
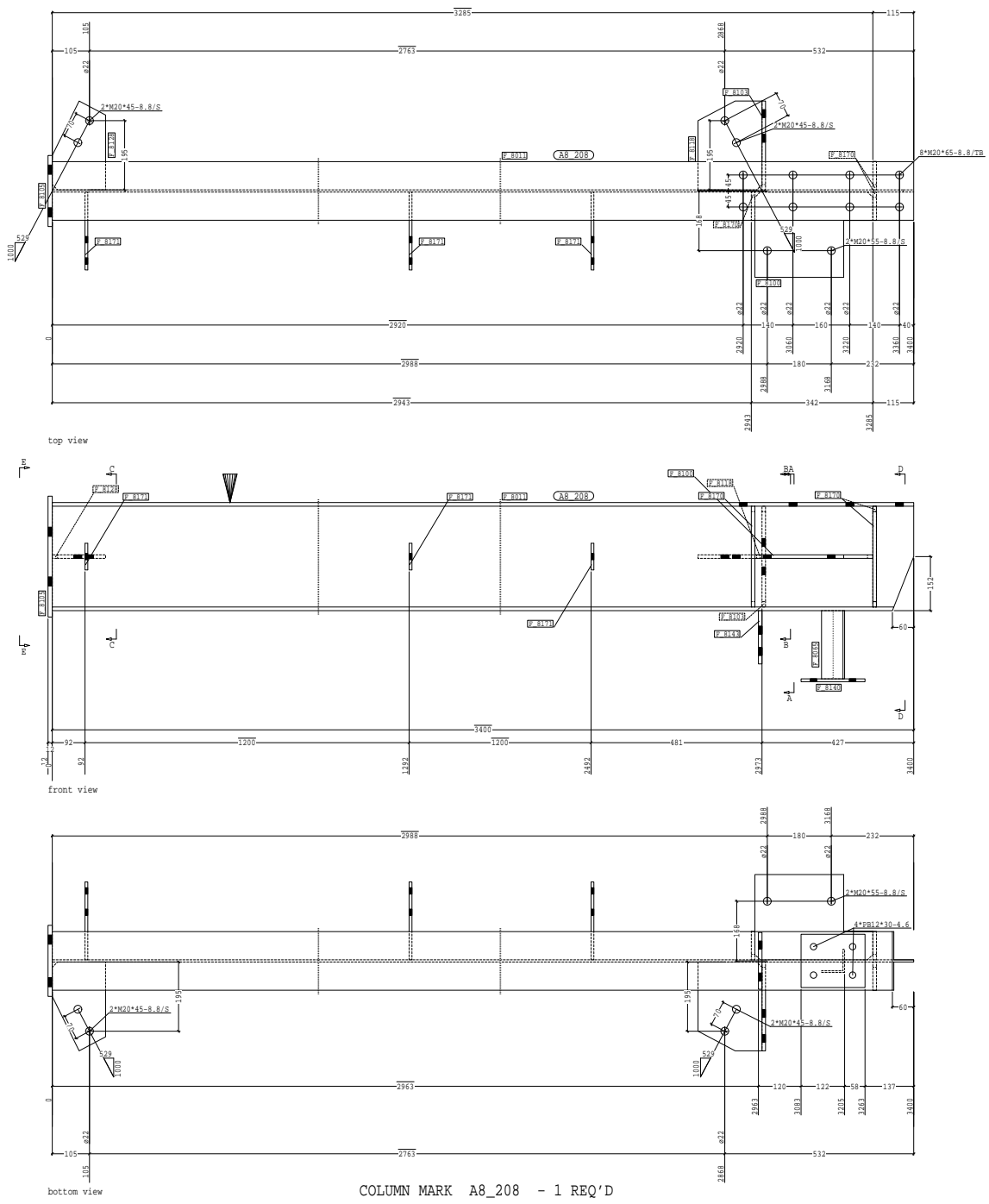
**LIFESP ENGINEERING**  
 5 JUNCTION STREET  
 AUBURN NSW 2144  
 Ph: (02) 9748 0444  
 Fax: (02) 9748 3984  
 enterprise drafting company  
 141 King Street Newtown NSW 2055

**SCALE** NTS  
**PROJECTION** 1st Angle

**CLIENT** LIFESP ENGINEERING  
**PROJECT** HARTLEY QUARRY - C7 DROP CHUTE GUARDS  
**DATE** 19.12.2005  
**SCALE** NTS  
**PROJ. NO.** 04123  
**DWG. NO.** 04121-ASSEMBLY-A12\_301  
**REV.** 0

THIS SCALE FULL SIZE ON ORIGINAL DRAWING  
240 MILLIMETRES

B1 INDICATES LOCATION OF MARK NUMBER FOR ORIENTATION



Mark	Description	Qty	Profile	Length	Grade	Unit Weight	Total Weight	Rev	
A8_208	COLUMN	1	3412			175.0	175.0	0	
F 8011	COLUMN	1	1310B840	3400	500+	137.4	137.4	0	
F 8065	ANGLE	1	65*58A	192	500+	0.9	0.9	0	
F 8100	PLATE	3	FL10*312	240	500+	6.0	6.0	0	
F 8103	PLATE	1	FL10*250	284	500+	5.6	5.6	0	
F 8105	BASE PLATE	1	FL12*200	340	500+	6.4	6.4	0	
F 8118	PLATE	1	FL10*180	250	500+	3.0	3.0	0	
F 8126	PLATE	1	FL10*150	250	500+	2.0	2.0	0	
F 8140	PLATE	1	FL8*150	180	500+	1.7	1.7	0	
F 8143	PLATE	1	FL10*150	360	500+	1.9	1.9	0	
F 8170	PLATE	3	FL10*80	284	250	1.8	5.4	0	
F 8171	PLATE	3	FL8*75	240	300+	1.0	3.0	0	
SHIPPING DIMENSIONS							3412*522*456	175.0	175.0

**GENERAL NOTES**

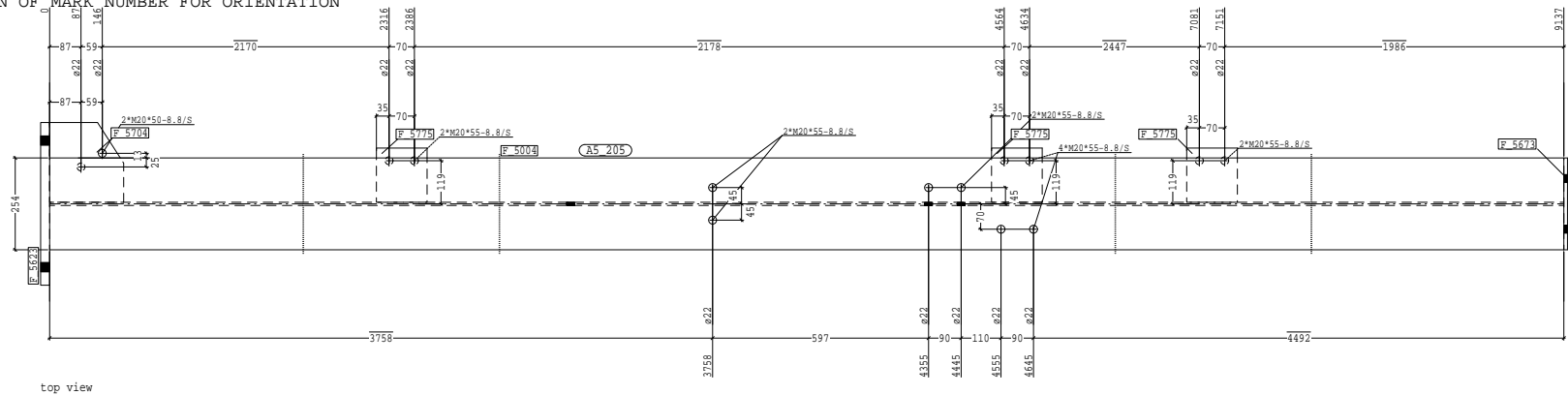
- ALL DIMENSIONS ARE IN mm. U.N.O.
- PLANS CUT SURFACES TO BE UNIFORM AND CLEAN BEFORE WELDING
- ALL FILLET WELDS TO BE 6 mm CONTINUOUS U.N.O.
- ALL FILLETS TO BE A MINIMUM OF 11 mm U.N.O.
- ALL ASSEMBLY ARE TO BE CLEARLY MARKED.
- ALL MATERIAL TO BE TO A.S. 4100
- FOR SURFACE TREATMENT REFER TO PAINT SPECIFICATIONS
- ALL WORKMANSHIP & WELDING SHALL BE IN ACCORDANCE WITH AS 4100 & AS 1554 PART 1 CAT. 02

**CLIENT:** BOWELL CONSTRUCTIONS PTY LIMITED  
**PROJECT:** PENRITH PLAZA - PLANTROOM (B)  
**DATE:** 12.04.2006  
**SCALE:** NTS

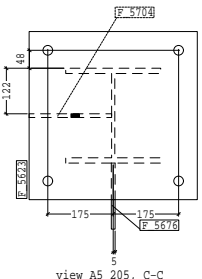
**DO NOT SCALE PROJECTION**

REV	ISSUED FOR APPROVAL & THEN FOR CONSTRUCTION	DATE	BY	REVISION
0	ISSUED FOR APPROVAL & THEN FOR CONSTRUCTION	12.04.2006	B. VELOVSKI	TBA

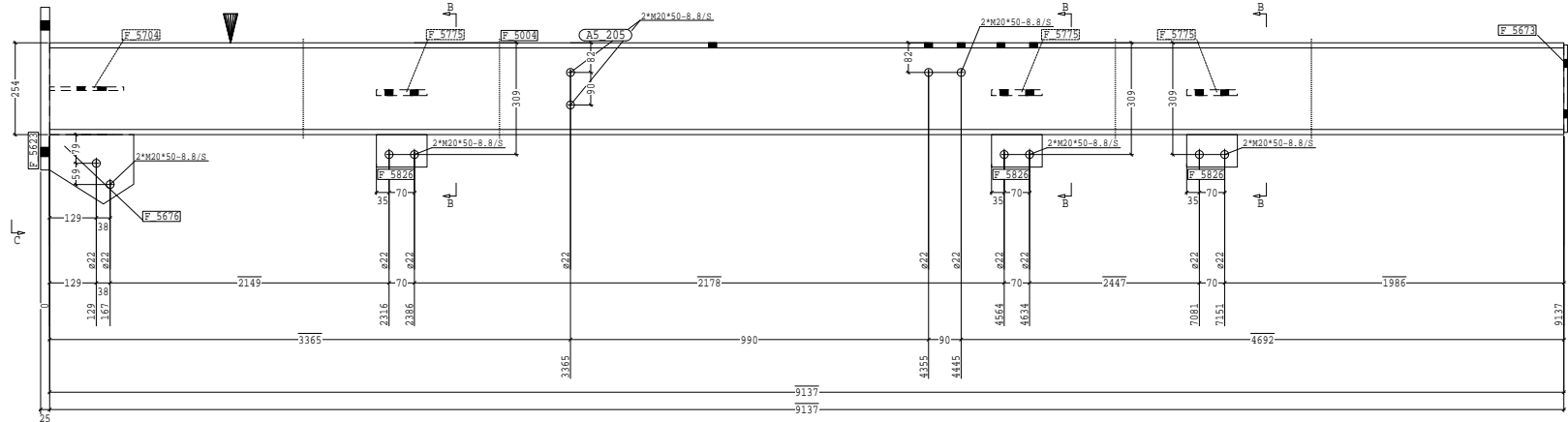
B1 INDICATES LOCATION OF MARK NUMBER FOR ORIENTATION



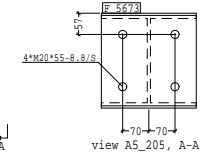
top view



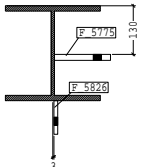
view A5\_205, C-C



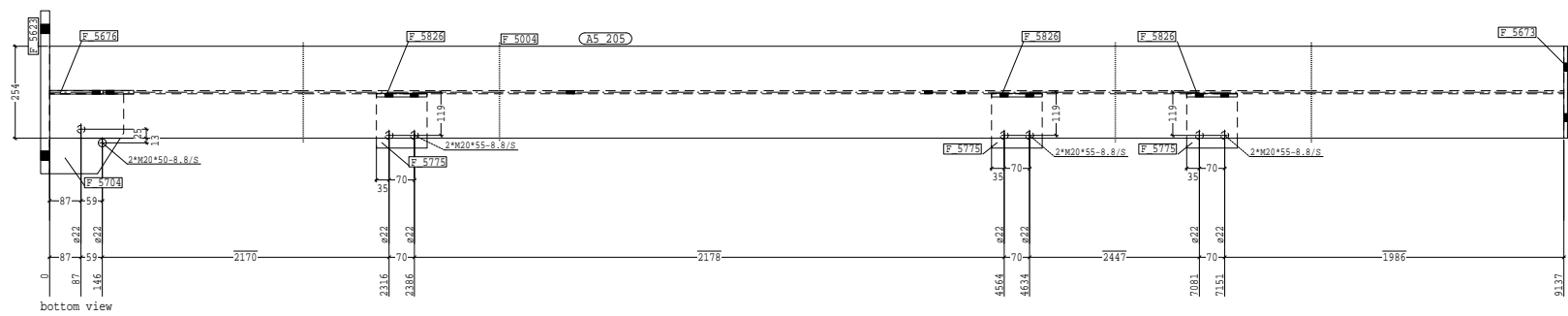
front view



view A5\_205, A-A



section A5\_205, B-B



bottom view

COLUMN MARK A5\_205 - 1 REQ'D

Mark	Description	Qty	Profile	Length	Grade	Unit Weight	Total Weight	Rev
A5_205	COLUMN	1	450			728.51	728.51	1
F 5004	COLUMN	1	2500C73	9137	350+	666.1	666.1	0
F 5673	BASE PLATE	1	PL25*450	450	250	39.7	39.7	0
F 5676	PLATE	1	PL10*242	254	250	4.0	4.0	0
F 5678	PLATE	1	PL10*232	321	250	3.5	3.5	0
F 5704	PLATE	1	PL10*205	221	250	3.5	3.5	1
F 5775	PLATE	3	PL16*150	140	100+	2.8	7.8	0
F 5826	PLATE	3	PL10*90	140	300+	1.0	3.0	0
Shipping Dimensions								
			455*94*9172			728.51	728.51	

GENERAL NOTES:  
 1. ALL DIMENSIONS ARE IN mm. U.N.O.  
 2. PLANS CUT SHIPMENTS TO BE UNIFORM AND CLEAN BEFORE WELDING  
 3. ALL FILLETS WELDS TO BE 6 mm CONTINUOUS U.N.O.  
 4. ALL FILLETS TO BE A MINIMUM OF 11 rad. U.N.O.  
 5. ALL ASSEMBLY ARE TO BE CLEANLY MARKED.  
 6. ALL MATERIAL TO BE TO A.S. 4100.  
 7. FOR SURFACE TREATMENT REFER TO PAINT SPECIFICATIONS  
 8. ALL WORKMANSHIP & WELDING SHALL BE IN ACCORDANCE WITH AS 4100 & AS 1554 PART 1 CAT. GP

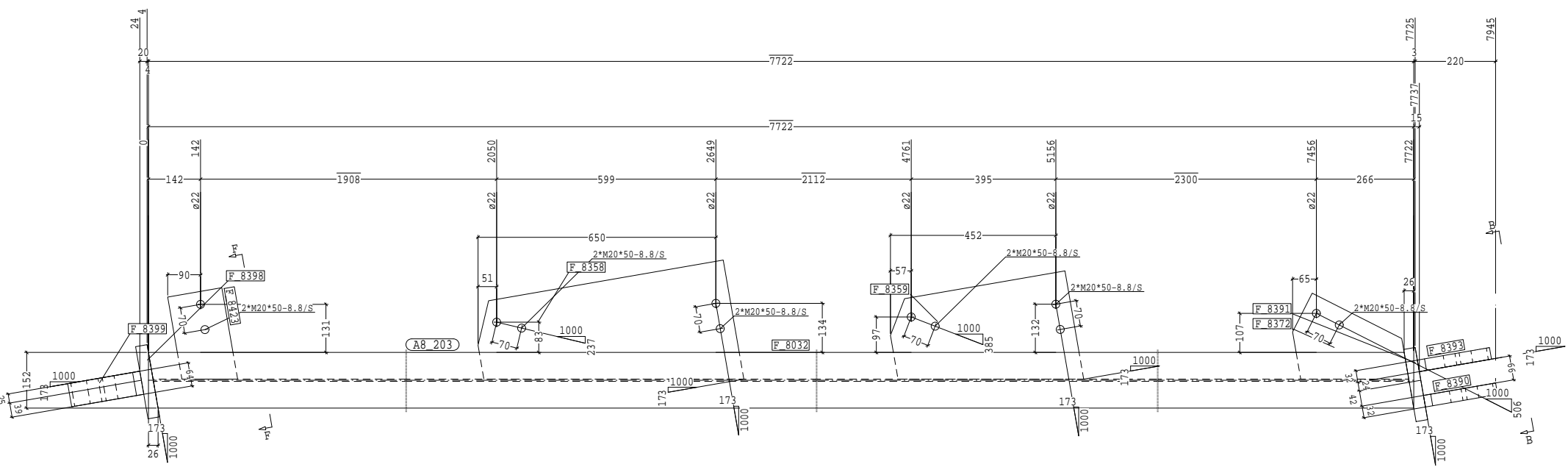
PROJECT: LIFESP ENGINEERING  
 5 JUNCTION STREET  
 AUBURN NSW 2144  
 PH: (02) 9748 0444  
 FAX: (02) 9648 3984  
 enterprise drafting | company  
 141 King Street Newtown NSW 2059

CLIENT: LIFESP ENGINEERING  
 PROJECT: HARTLEY QUARRY CONVEYOR C4  
 REFERENCE DRAWINGS: REFER TO 5000 SERIES  
 CADD FILE NO: A05A5\_205  
 DWG FILE NO: 04121-ASSEMBLY-A5\_205  
 DATE: 11.10.2005  
 DATE: 27.09.2005  
 SCALE: NTS  
 TDC JOB NO: 04123

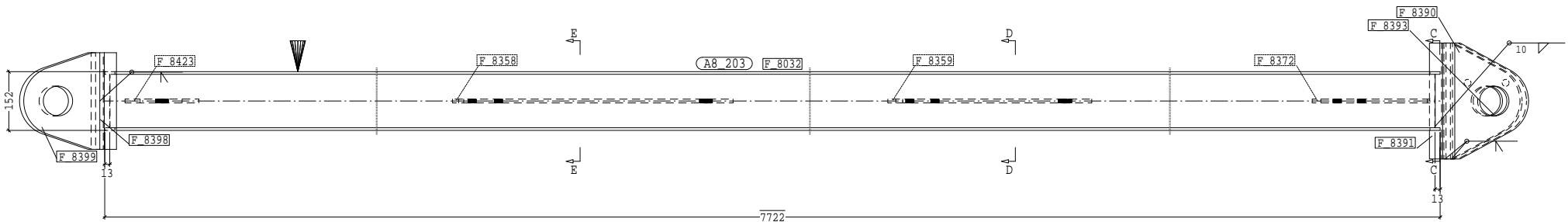
REV	DESCRIPTION	DATE	BY	CHKD	APP'D	VAR
1	DETAILS CORRECTED TO SUIT GPU BRACING	11.10.2005	M.BAJOREK			XX
0	ISSUED FOR APPROVAL & THEN FOR CONSTRUCTION	27.09.2005	M.BAJOREK			XX

THIS SCALE FULL SIZE ON ORIGINAL DRAWING  
200 240 MILLIMETRES

B1 ▼ INDICATES LOCATION OF MARK NUMBER FOR ORIENTATION

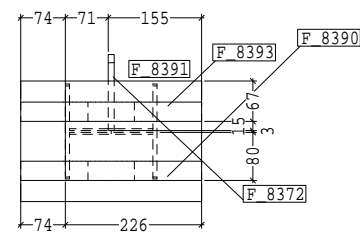


top view

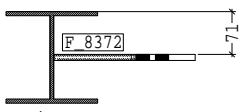


front view

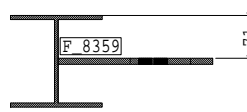
COLUMN MARK A8\_203 - 1 REQ'D



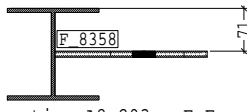
section A8\_203 , B-B



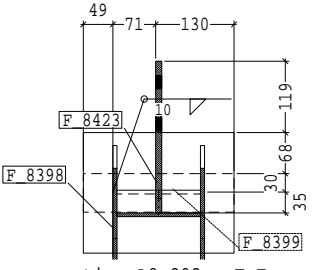
section A8\_203 , C-C



section A8\_203 , D-D



section A8\_203 , E-E



section A8\_203 , F-F

Mark	Description	Qty	Profile	Length	Grade	Min Height	Total Height	Rev
AB 203	COLUMN	1	305	7722	302.8	302.8	302.8	0
F 8032	COLUMN	1	1500C23	7722	300+	180.7	180.7	0
F 8358	PLATE	1	PL10*130	700	250	18.0	18.0	0
F 8359	PLATE	1	PL10*200	500	250+	11.8	11.8	0
F 8372	PLATE	1	PL10*276	291	250	6.1	6.1	0
F 8390	PLATE	1	PL12*200	300	250	15.1	15.1	0
F 8391	BASE PLATE	1	PL12*200	300	250	15.1	15.1	0
F 8393	PLATE	1	PL12*200	300	250	15.1	15.1	0
F 8398	CAP PLATE	1	PL12*200	250	250	12.6	12.6	0
F 8399	PLATE	1	PL16*200	250	250	25.1	25.1	0
F 8423	PLATE	1	PL10*150	253	300+	3.0	3.0	0
SHORING DIMENSIONS			300*80*71685			302.8	302.8	

REV	DESCRIPTION	DATE	BY	CHECKED	SCALE	PROJECTION	MARK	CLIENT	PROJECT	DATE	SCALE	PROJECTION	MARK	CLIENT	PROJECT	DATE	SCALE	PROJECTION	MARK	
0	ISSUED FOR APPROVAL & THEN FOR CONSTRUCTION																			
1																				

**GENERAL NOTES**

- ALL DIMENSIONS ARE IN mm. U.N.O.
- FLAME CUT SURFACES TO BE UNIFORM AND CLEAN BEFORE WELDING
- ALL FILLET WELDS TO BE 6 mm CONTINUOUS U.N.O.
- ALL FILLETS TO BE A MINIMUM OF 11 rad. U.N.O.
- ALL ASSEMBLIES TO BE CLEARLY MARKED.
- ALL MATERIAL TO BE TO A.S. 4100
- FOR SUSPECT TREATMENT REFER TO PAINT SPECIFICATIONS
- ALL WORKMANSHIP & WELDING SHALL BE IN ACCORDANCE WITH AS 4100 & AS 1564 PART 1 CAT. 5P

**ENTERPRISE ENGINEERING**  
 5 JUNCTION STREET  
 ABERDEEN AB9 2JL  
 PH: (012) 9748 0444  
 FAX: (012) 9648 3984

**LIFESP ENGINEERING**  
 141 King Street, Newcastle NSW 2060

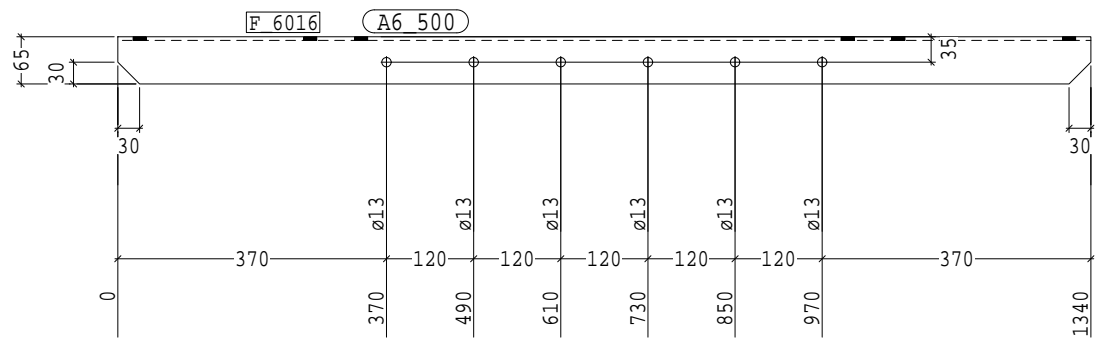
**CLIENT:** LIFESP ENGINEERING  
**PROJECT:** HARTLEY QUARRY CONVEYOR C8  
**MARK:** 1 COLUMN REQUIRED MARKED A8\_203  
**SCALE:** NTS  
**PROJECTION:** FIRST ANGLE

THIS SCALE FULL SIZE ON ORIGINAL DRAWING  
240 MILLIMETRES  
220  
200  
180  
160  
140  
120  
100  
80  
60  
40  
20  
0

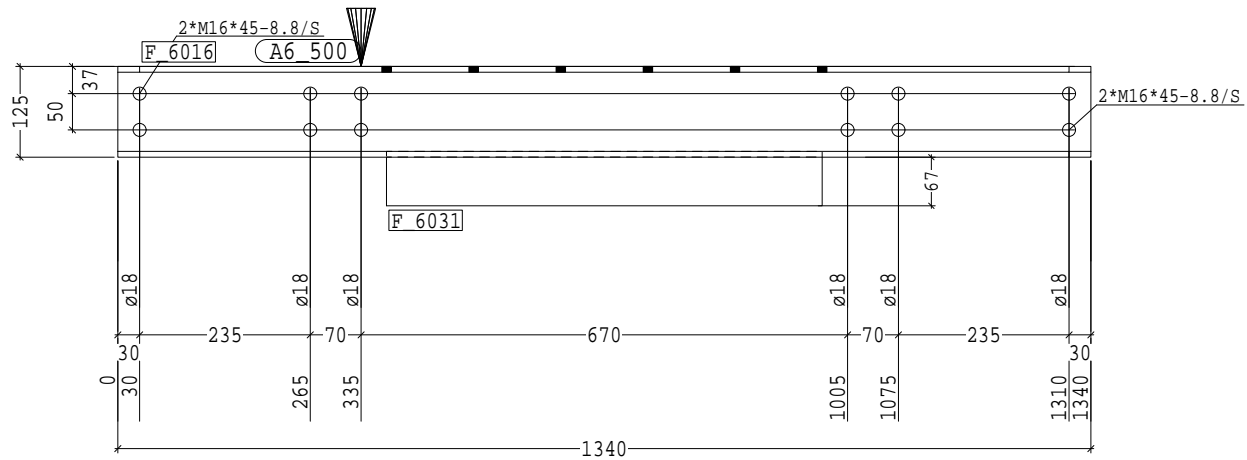
1 2 3 4 5 6 7 8 9 10 11 12

A B C D E F G H

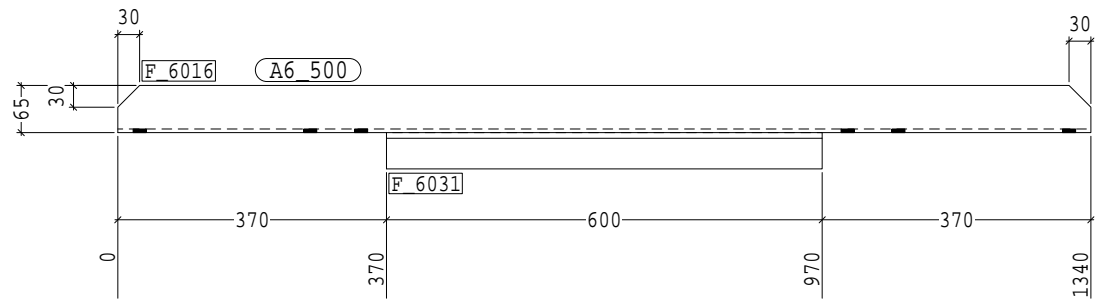
B1 ▼ INDICATES LOCATION OF MARK NUMBER FOR ORIENTATION



top view



front view



bottom view

LOAD SKIRT MARK A6\_500 - 2 REQ'D

Mark	Description	Qty	Profile	Length	Grade	Unit Weight	Total Weight	Rev
A6 500	LOAD SKIRT	2	125FFC	1340	300+	20.3	40.6	0
F 6016	LOAD SKIRT	2	75*50*80A	600	300+	4.3	8.6	0
Shipping Dimensions				1340*152*115		20.3	40.6	

GENERAL NOTES  
 1. ALL DIMENSIONS ARE IN mm. U.N.O.  
 2. FLAME CUT SURFACES TO BE UNIFORM AND CLEAN BEFORE WELDING  
 3. ALL FILLER METALS TO BE 6 mm CONTINUOUS U.N.O.  
 4. ALL FILLETS TO BE A MINIMUM OF 11 rad. U.N.O.  
 5. ALL ASSEMBLIES TO BE CLEARLY MARKED.  
 6. ALL MATERIAL TO BE TO A.S. 4100.  
 7. FOR SUSPECT TREATMENT REFER TO PAINT SPECIFICATIONS  
 8. ALL WORKMANSHIP & WELDING SHALL BE IN ACCORDANCE WITH AS 4100 & AS 1554 PART 1 CAT. SP

**LIFESP ENGINEERING**  
 5 JUNCTION STREET  
 AUBURN NSW 2144  
 Ph: (02) 9748 0444  
 Fax: (02) 9748 3984  
 enterprise | drafting | company  
 10 King Street Newcastle NSW 2056

DATE: 28.10.2006  
 DRAWN: [Signature]  
 CHECKED: [Signature]  
 DATE: 28.10.2006  
 REFERENCE DRAWINGS: REFER TO 4000 SERIES  
 SCALE: NTS  
 PROJECT: HARTLEY QUARRY CONVEYOR C5  
 CLIENT: LIFESP ENGINEERING

DO NOT SCALE PROJECTION  
 CDD FILE No. A06A6\_500  
 DWDWG No. 04121-ASSEMBLY-A6\_500  
 REV: 0

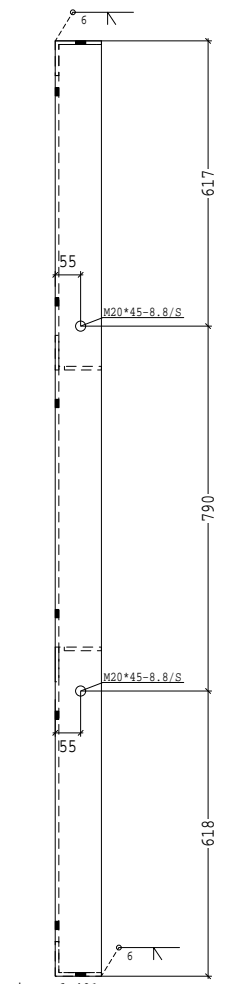
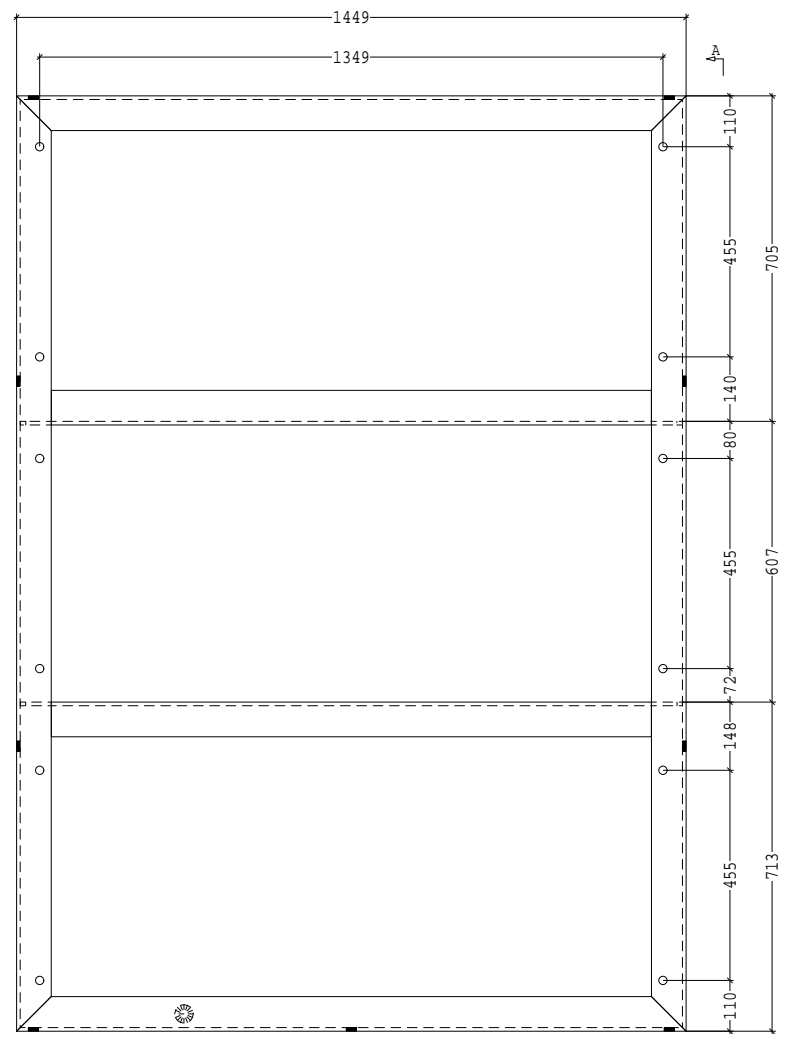
REV	ISSUED FOR APPROVAL & THEN FOR CONSTRUCTION	DATE	BY	REVISION
0	ISSUED FOR APPROVAL & THEN FOR CONSTRUCTION	28.10.2006	D. POLGLAISE	XX

1 2 3 4 5 6 7 8 9 10 11 12

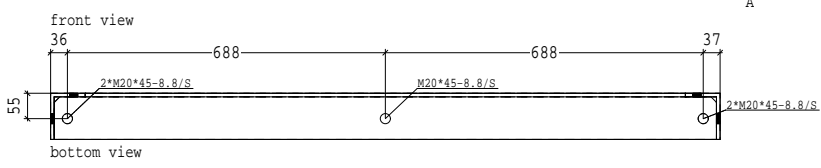


THIS SCALE FULL SIZE ON ORIGINAL DRAWING  
240 MILLIMETRES

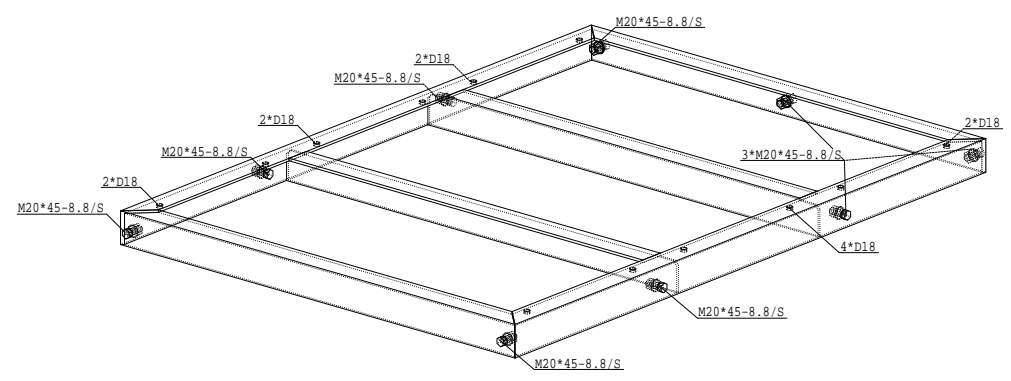
B1 ▼ INDICATES LOCATION OF MARK NUMBER FOR ORIENTATION



view A6\_401, A-A



BRACKET MARK A6\_401 - 1 REQ'D



Mark	Description	Qty	Profile	Length	Grade	Dist	Height	Rev	
A6_401	BRACKET	1		1449		130.0	130.0	0	
F_6023	BRACKET	2	100*75*8/8	2025	300+	20.0	41.0	0	
F_6024	BRACKET	1	100*75*8/8	1449	300+	14.0	14.0	0	
F_6025	BRACKET	1	100*75*8/8	1449	300+	14.0	14.0	0	
F_6026	BRACKET	4	100*75*8/8	1483	300+	14.0	50.2	0	
Shipping Dimensions							1449*130*205	130.0	130.0

<b>GENERAL NOTES</b> 1. ALL DIMENSIONS ARE IN mm. U.N.O. 2. FLAME CUT SURFACES TO BE UNIFORM AND CLEAN BEFORE WELDING 3. ALL FILLET WELDS TO BE 6 mm CONTINUOUS U.N.O. 4. ALL FILLETS TO BE A MINIMUM OF 11 rad. U.N.O. 5. ALL ASSEMBLIES TO BE CLEARLY MARKED. 6. ALL MATERIAL TO BE TO A.S. 4100. 7. FOR SURFACE TREATMENT REFER TO PAINTING SPECIFICATIONS 8. ALL WORKMANSHIP & WELDING SHALL BE IN ACCORDANCE WITH AS 4100 & AS 1554 PART 1 CAT. SP		<b>LIFESP ENGINEERING</b> 5 JUNCTION STREET AUBURN NSW 2144 Ph: (02) 9748 0444 Fax: (02) 9648 3984	Scale: 1:1 Date: 28.10.2006 Project: 04121-ASSEMBLY-A6_401	<b>CLIENT:</b> LIFESP ENGINEERING <b>PROJECT:</b> HARTLEY QUARRY CONVEYOR C5 <b>SCALE:</b> NTS <b>DATE:</b> 28.10.2006 <b>PROJECT:</b> 04121-ASSEMBLY-A6_401
---	--	--	--	--

REV	ISSUED FOR APPROVAL & THEN FOR CONSTRUCTION	DATE	BY	DATE	BY
0	ISSUED FOR APPROVAL & THEN FOR CONSTRUCTION	28.10.2006	D. POLGLAISE		XX