



# **Capabilities of the Australian steel industry to supply major projects in Australia**

**compiled by  
the Australian Steel Institute**

**Version 2.6 – March 2023**

# **Table of Contents**

<b>1.</b>	<b>Introduction</b>	<b>3</b>
<b>2.</b>	<b>Background of Australian steel sector</b>	<b>4</b>
<b>3.</b>	<b>About the Australian Steel Institute</b>	<b>9</b>
<b>4.</b>	<b>Competitive advantages of the Australian steel industry</b>	<b>13</b>
<b>5.</b>	<b>Capability of industry sectors</b>	
	<b>A. Steel manufacturing</b>	<b>17</b>
	<b>B. Roll-forming</b>	<b>30</b>
	<b>C. Distribution</b>	<b>32</b>
	<b>D. Fabrication</b>	<b>34</b>
	<b>E. Construction Modelling</b>	<b>45</b>
	<b>F. Hot Dip Galvanizing</b>	<b>49</b>
	<b>G. Protective Coatings</b>	<b>53</b>
	<b>H. Grating and Handrails</b>	<b>57</b>
<b>6.</b>	<b>Quality and Standards</b>	<b>58</b>
<b>7.</b>	<b>Welding and Testing</b>	<b>65</b>
<b>8.</b>	<b>Steel reinforcing</b>	<b>67</b>
<b>9.</b>	<b>Whole of industry cooperation</b>	<b>71</b>
<b>10.</b>	<b>Industry Participation Plans and Local Content Procurement</b>	<b>73</b>
<b>11.</b>	<b>Logistics</b>	<b>80</b>
<b>12.</b>	<b>Work Health and Safety</b>	<b>83</b>
<b>13.</b>	<b>Environment and Sustainability</b>	<b>85</b>
<b>14.</b>	<b>Case Studies</b>	<b>92</b>
<b>15.</b>	<b>Acknowledgements</b>	<b>98</b>

# 1. Introduction

## Purpose

This document has been prepared by the Australian Steel Institute (ASI) on behalf of its members and the wider steel industry. It is a summary of the structure, capabilities and capacities of the Australian 'steel value chain' and provides a background into the business environment in which the industry operates. The main purpose of the document is to provide an overview of the industry and highlight the essential role Australian manufactured, fabricated and processed steel plays in delivering value to the Australian construction and manufacturing industries.

This document describes the structure, capability and value of the Australian steel industry and provides information on the capacity of the Australian steel manufacturers and the fabrication sector as a reference document for major project proponents and their Engineering, Procurement, Construction Management (EPCM) contractors.

## Context

The intrinsic value of engaging and using the Australian steel industry are outlined and a summary of the main industry sectors is provided. The applicable compliance requirements and standards applicable to construction in Australia are also explained.

ASI is of the view that early engagement with project teams will maximise the potential benefits that will flow to each project and local industry. The Australian steel industry is keen to work with project proponents and their constructors, engineers, specifiers and procurers from the outset to achieve optimum project outcomes and help ensure that local industry is provided with full, fair and reasonable opportunity to supply major projects within Australia.



## 2. Background of the Australian steel sector

### Industry Structure

The Australian steel industry consists of four primary steel producers, supported by over 300 steel distribution outlets throughout the country and numerous manufacturing, fabrication and engineering companies.

### Production, Employment and End Use Statistics

According to the Australian Bureau of Statistics, the Australian steel supply chain, from basic iron and steel production through to downstream users such as fabricators, employed nearly 110,000 Australians in 2017-2018<sup>1</sup> and generates annual revenue in the order of \$29 billion. Table 1 below shows Australian iron and steel production for the period 2016 to 2021.

**Table1 – Australian Iron and Steel Production (million tonnes)**

Production	2016	2017	2018	2019	2020	2021
Pig Iron	3.642	3.758	3.882	3.664	3.723	3.751
Ingots	0.026	N/A	N/A	N/A	N/A	N/A
Crude Steel	5.259	5.328	5.689	5.493	5.490	5.780
Hot Rolled Products	4.693	4.606	5.146	4.961	4.915	4.848
Hot Rolled Long Products	1.954	1.603	2.069	1.978	1.964	1.733
Hot Rolled Flat Products	2.739	3.003	3.077	2.982	2.951	3.115
Railway Track Material	0.089	N/A	0.100	0.080	0.090	N/A
Hot Rolled Bars (excl. concrete reinforcing bars)	0.644	0.672	1.053	1.052	1.018	1.079
Wire Rod	0.927	0.931	0.650	0.615	0.578	0.654
Hot Rolled Coil, Sheet, and Strip (<3mm)	2.501	2.709	2.747	2.679	2.612	2.763
Other Metal Coated Sheet and Strip (excl. Tin Mill Products)	1.473	1.536	1.613	1.515	1.589	1.749
Non-metallic Coated Sheet and Strip	0.719	0.724	0.761	0.764	0.797	0.887
Tubular Products	0.155	N/A	N/A	N/A	N/A	N/A

Source: World Steel Statistical Yearbook 2022

Primary steel production occurs in New South Wales, Victoria and South Australia. Overall steel industry employment follows a similar pattern (see Figure 1). For more detail on steel manufacturing see Section 5A. The combined domestic crude steel production capacity exceeds five million tonnes annually (see Table 1). This compares to domestic crude steel consumption of approximately six million tonnes per annum (see Table 2). Some specialised steel types, most notably stainless steel, and tinplate, are not manufactured in Australia. Markets for these products are serviced by imports. Specialised products produced locally include railway track and sleepers, pipe and tube, and plate. The majority of steel end use is in the building and construction sector (see Figure 2).

<sup>1</sup> ABS 81550DO003\_201718 Australian Industry, 2017-18 (Manufacturing Industry Data Cube)

**Table 2 – Australian Apparent Steel Usage**

<b>Apparent Use</b>	<b>2016</b>	<b>2017</b>	<b>2018</b>	<b>2019</b>	<b>2020</b>	<b>2021</b>
Apparent Crude Steel Use (million tonnes)	6.477	6.025	6.091	6.091	5.648	6.900
Apparent Crude Steel Use per Capita (kg)	268	245	244	240	220	266
Apparent Finished Steel Use (million tonnes)	5.849	5.441	5.500	5.500	5.100	6.230

Source: World Steel Statistical Yearbook 2022

The annual value of steel exports typically ranges between A\$0.6 billion and A\$1.3 billion (see Table 3). During the same period, export volumes have risen steadily to approximately 1.0 million tonnes per annum.

**Table 3 – Australian Steel Exports**

<b>Exports</b>	<b>2016</b>	<b>2017</b>	<b>2018</b>	<b>2019</b>	<b>2020</b>	<b>2021</b>
Semi-finished and Finished Products (M tonnes)	0.776	0.979	0.998	1.149	0.891	0.711
Ingots and Semis (million tonnes)	0.041	0.018	0.095	0.066	0.002	0.118
Long Products (million tonnes)	0.119	0.087	0.110	0.152	0.099	0.155
Flat Products (million tonnes)	0.529	0.809	0.724	0.886	0.721	0.375
Tubular Products (million tonnes)	0.065	0.039	0.042	0.044	0.067	0.063
Total Value (FOB) of Exports (A\$ billion)	0.60	0.87	1.287	1.011	0.773	1.047

Source: World Steel Statistical Yearbook 2022, Office of the Chief Economist (Resources & Energy Quarterly December 2022)

Australian industry competes in a global market that has both significant capacity and widespread market access issues. The value of steel imports averages around A\$3.0 billion for the period 2016 to 2021 (Table 4), with a notable drop-off from 2016 onwards associated with the closure of domestic automotive manufacturing.

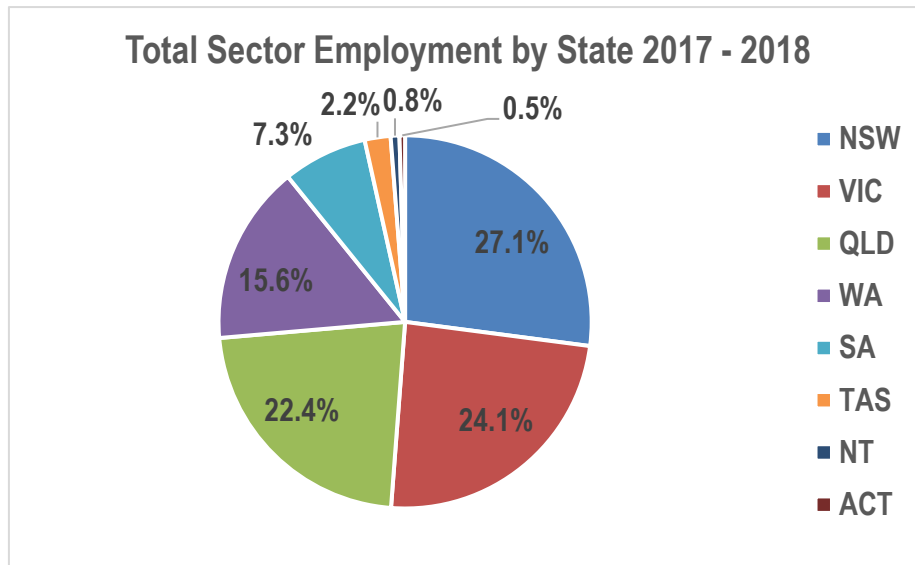
**Table 4 – Australian Steel Imports**

<b>Imports</b>	<b>2016</b>	<b>2017</b>	<b>2018</b>	<b>2019</b>	<b>2020</b>	<b>2021</b>
Pig Iron (million tonnes)	0.011	0.017	0.013	0.021	0.012	0.010
Semi-finished and Finished Products (M tonnes)	1.935	2.269	2.290	1.860	1.835	1.171
Ingots and Semis (million tonnes)	0.016	0.003	0.001	0.002	0.056	0.231
Long Products (million tonnes)	0.914	1.126	1.077	0.785	0.690	0.327
Flat Products (million tonnes)	0.634	0.671	0.661	0.569	0.540	0.299
Tubular Products (million tonnes)	0.369	0.465	0.549	0.503	0.496	0.313
Total Value of Imports (A\$ billion)	3.14	2.45	2.992	2.634	2.599	4.504

Source: World Steel Statistical Yearbook 2022, Office of the Chief Economist (Resources & Energy Quarterly December 2022)

According to the World Steel Association, the top three steel producing countries in 2021 were China (1,033 million tonnes), India (1118 million tonnes) and Japan (96 million tonnes). Both major domestic steel producers are multinational companies with international steelmaking operations. Liberty Steel Group was ranked as 54<sup>th</sup> largest producer in the world in 2021 with an estimated production of 7.7 million tonnes, whilst during the same period BlueScope was ranked the 62<sup>nd</sup> largest with total production of 6.03 million tonnes.

**Figure 1 – Total Steel Sector Employment by State**

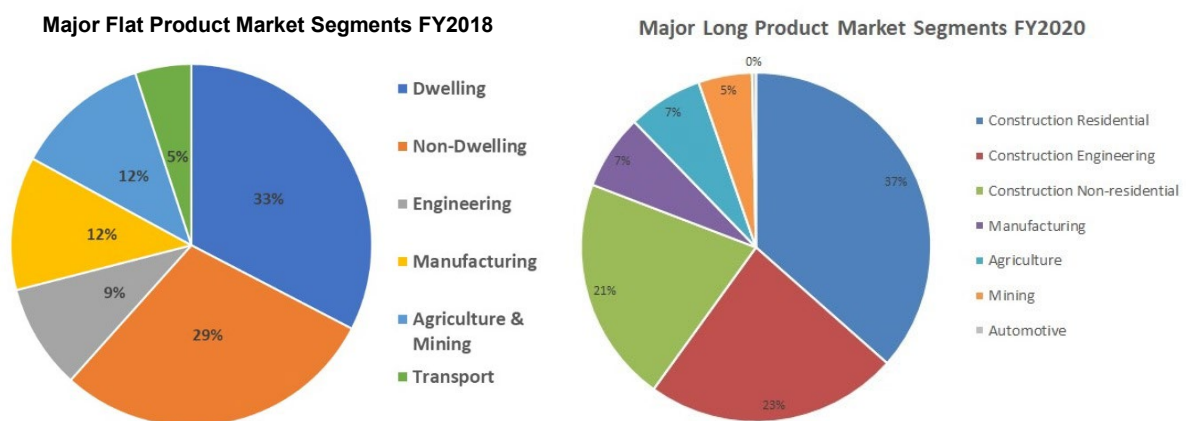


Source: ABS 81550DO003\_201718 Australian Industry, 2017-18 (Manufacturing Industry Data Cube)

National employment in the steel industry is comprised as follows:

Segment	Employment
Primary steel production	22,320
Heavy fabrication	38,554
Medium fabrication and general manufacturing	48,952
Total	109,826

**Figure 2: Steel Product Market Segments**

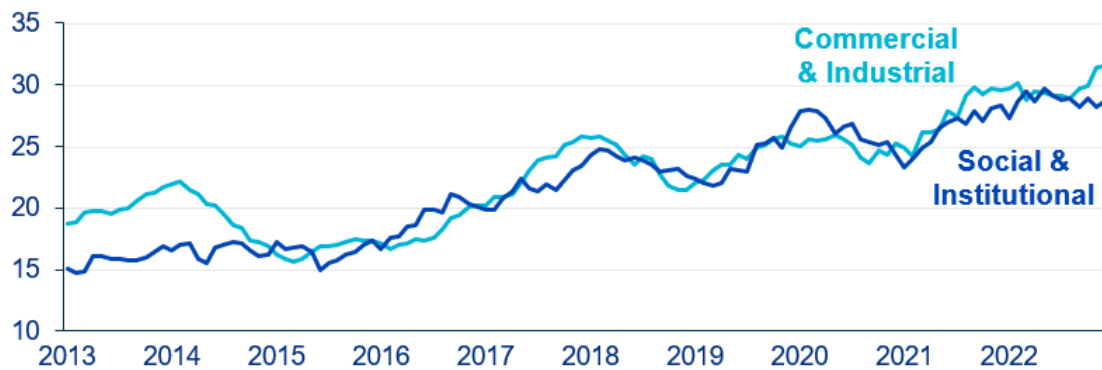


Source: BlueScope Steel, InfraBuild Steel

The underlying strength of the Australian steel market is shown in the figures 3 to 6 below.

**Figure 3: Non-Residential Building Approvals 2013 to 2022**

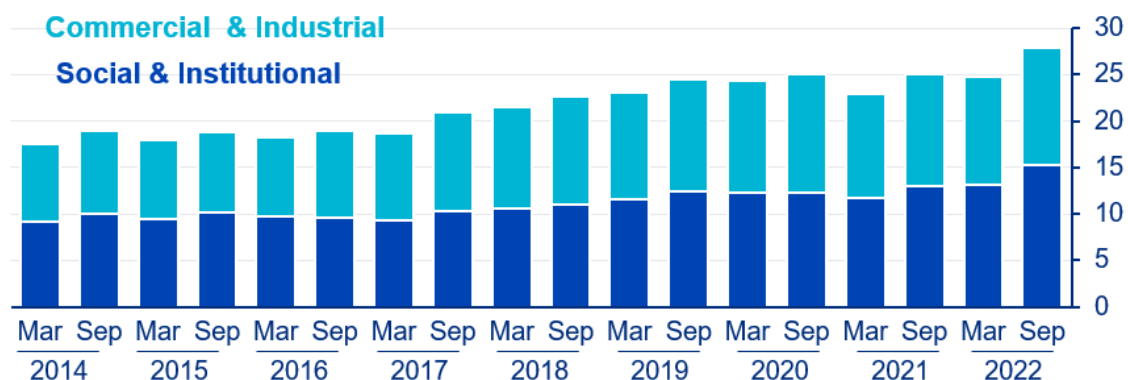
**Non-Residential Building Approvals: rolling 12 months<sup>1</sup> (A\$Bn)**



Source: 1. ABS series 8731, table 51; original data; current \$; total sectors; data to Dec-22

**Figure 4: Non-Residential Work Done 2014 to 2022**

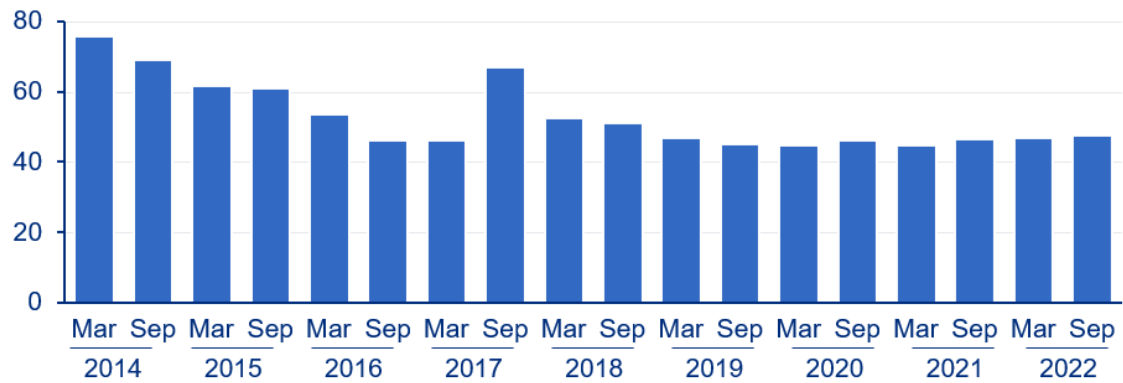
**Non-Residential Work Done: by halves<sup>2</sup> (A\$Bn)**



Source: 2. ABS series 8752, table 51; original data; current \$; total sectors; data to Sep-22 half

**Figure 5: Engineering Construction Work Done 2014 to 2022**

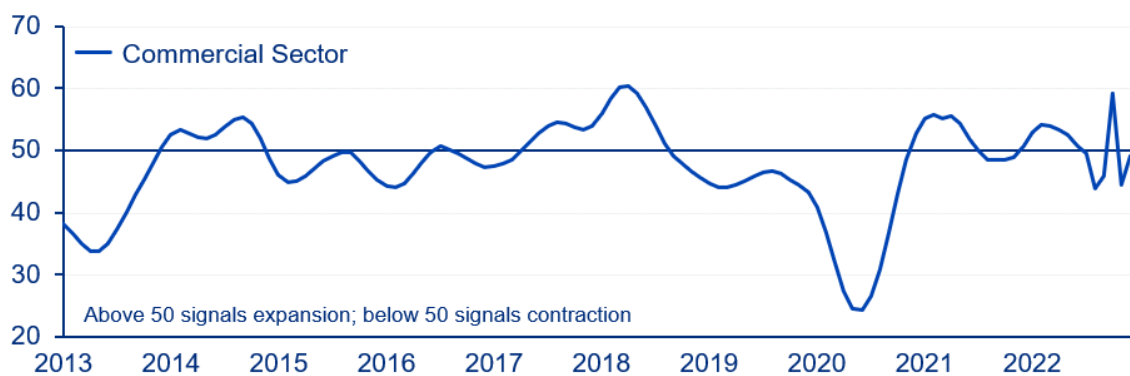
### Engineering Construction Work Done: by halves<sup>3</sup> (A\$Bn)



Source: 3. ABS series 8762, table 1; seasonally adjusted data; real \$; total sectors; data to Sep-22 half

**Figure 6: Performance of Construction Index 2013 to 2022**

### Performance of Construction Index<sup>4</sup>



Source: 4. Australian Industry Group; seasonally adjusted data; data to Dec-22



## Australian steel supply chain

○ Primary Steel Production		
Sector	Flat Products	Long Products
<b>Processes</b>	<ul style="list-style-type: none"> <li>- Cokemaking</li> <li>- Sintering</li> <li>- Ironmaking</li> <li>- Steelmaking (BOF)</li> <li>- Continuous Casting (Slab)</li> <li>- Hot Rolling (Plate / Strip)</li> <li>- Cold Rolling</li> <li>- Continuous Metal Coating</li> <li>- Continuous Coil Painting</li> </ul>	<ul style="list-style-type: none"> <li>- Cokemaking</li> <li>- Sintering</li> <li>- Ironmaking</li> <li>- Steelmaking (BOF/EAF)</li> <li>- Continuous Casting (Slab / Bloom / Billet)</li> <li>- Hot Rolling (Rod / Bar / Beam)</li> </ul>
<b>Common Products</b>	<ul style="list-style-type: none"> <li>• Hot Rolled Coil</li> <li>• Cold Rolled Coil</li> <li>• Plate</li> <li>• Metal Coated Strip</li> <li>• Painted Strip</li> <li>• Welded Beam</li> </ul>	<ul style="list-style-type: none"> <li>• Rail &amp; Sleeper</li> <li>• Merchant Bar</li> <li>• Specialty Bar</li> <li>• Specialty Rod</li> <li>• Reinforcing Rod &amp; Bar</li> <li>• Hot Rolled Structural</li> </ul>
○ Secondary Steel Production		
<b>Processes</b>	<ul style="list-style-type: none"> <li>- ERW Pipe and Tube Forming</li> <li>- Electro-galvanizing</li> <li>- Heat treatment</li> </ul>	<ul style="list-style-type: none"> <li>- Wire Drawing</li> <li>- Galvanized Coating</li> <li>- PVC Coating</li> <li>- Reinforcing Mesh Manufacture</li> </ul>
<b>Common Products</b>	<ul style="list-style-type: none"> <li>• Precision Tube</li> <li>• Structural Pipe</li> <li>• Galvanized Pipe</li> <li>• Quench &amp; Tempered Plate</li> </ul>	<ul style="list-style-type: none"> <li>• Plain Wire</li> <li>• Barbed Wire</li> <li>• High Tensile Wire</li> </ul>
○ Distribution and Processing		
<b>Processes</b>	<ul style="list-style-type: none"> <li>- Slitting</li> <li>- Shearing</li> <li>- Cut to length</li> <li>- Machining</li> <li>- Pre-drilling</li> <li>- Pre-cutting</li> <li>- Profiling</li> <li>- De-burring</li> </ul>	<ul style="list-style-type: none"> <li>- Inventory Management</li> <li>- Warehousing / Stocking</li> <li>- Order Collation</li> <li>- Logistics</li> <li>- Temporary Storage Solutions</li> <li>- Bundling and Packaging</li> <li>- Pre-assembly</li> <li>- Installation Coordination</li> </ul>
<b>Common Products</b>	<ul style="list-style-type: none"> <li>• Mults / Slits</li> <li>• Sheets</li> </ul>	<ul style="list-style-type: none"> <li>• All Primary Products</li> <li>• All Secondary Products</li> </ul>

## Building and Construction Applications

○ <b>Construction Modelling</b>		
<b>Outputs</b>	- Detailed Design	- Component Drawings
○ <b>Fabrication</b>		
<b>Processes</b>	- Coping - Boring / Drilling - Machining - Cutting	- Welding - Hot Dip Galvanizing - Painting - Assembly and Transport
<b>Common Products</b>	<ul style="list-style-type: none"> <li>• Beams</li> <li>• Columns</li> <li>• Girders</li> <li>• Gentries</li> <li>• Platforms</li> </ul>	<ul style="list-style-type: none"> <li>• Towers</li> <li>• Supports</li> <li>• Staircases</li> <li>• Rolling stock</li> <li>• Truck Chassis and Trailers</li> </ul>
○ <b>Steel Reinforcing</b>		
<b>Processes</b>	- Welding - Cutting	- Drawing - Bending - Fabrication
<b>Common Products</b>	<ul style="list-style-type: none"> <li>• Mesh</li> <li>• Rock Bolts</li> </ul>	<ul style="list-style-type: none"> <li>• Prefabricated elements</li> <li>• Fitments</li> </ul>
○ <b>Roll-forming</b>		
<b>Processes</b>	- Profiling	- Folding and Bending
<b>Common Products</b>	<ul style="list-style-type: none"> <li>• Roof Sheeting</li> <li>• Cladding</li> <li>• Rainwater Goods</li> <li>• Structural Decking</li> </ul>	<ul style="list-style-type: none"> <li>• Purlins and Girts</li> <li>• Framing</li> <li>• Culvert Pipe</li> <li>• Ductwork</li> </ul>

## Manufacturing Applications

<b>Processes</b>	- Machining - Punching - Pressing - Drawing - Forging / Upsetting - Hot Dip Galvanizing	- Seaming - Welding - Heat Treatment - Soldering / Gluing - Powder Coating - Enamelling
<b>Common Products</b>	<ul style="list-style-type: none"> <li>• Ovens and Stoves</li> <li>• Air Conditioners</li> <li>• Water Tanks</li> <li>• Hot Water Heaters</li> <li>• Insulated Panels</li> <li>• Componentry and Brackets</li> <li>• Caravans</li> <li>• Trailers</li> <li>• Toolboxes</li> </ul>	<ul style="list-style-type: none"> <li>• Fasteners</li> <li>• Coil and Leaf Springs</li> <li>• Nail Plate</li> <li>• Furniture and Cabinets</li> <li>• Racking and Shelving</li> <li>• Cable Trays and Ladders</li> <li>• Pipe Hangers</li> <li>• Struts</li> <li>• Meter Boxes</li> </ul>

### 3. About the Australian Steel Institute

The Australian Steel Institute (ASI) is the nations peak body representing the entire steel supply chain, from the primary steel producers through to end users in the building and construction, structural design, architecture, detailing, fabrication, heavy engineering and manufacturing sectors. The ASI membership base includes approximately 6,000 individuals that are associated with more than 500 corporate memberships and over 350 individual memberships.

Steel is the backbone of Australia's construction, resources, infrastructure and manufacturing sectors. It is a vital and sustainable source of innovation, employment and capability in our cities and our regional communities.

A not-for-profit organisation, the ASI's activities extend to, and promote, advocacy and support, steel excellence, standards and compliance, training, events and publications. The ASI provides marketing and technical leadership to promote Australian-made steel as the preferred material to the resources, construction, and manufacturing industries, as well as policy advocacy to government.

#### **Our Vision:**

- **To influence profitable growth for the complete Australian steel value chain.**

#### **Our Mission:**

- **To promote steel as the material of choice**
- **To promote the capability and capacity of the Australian steel supply chain**
- **To provide leadership in advocacy, compliance, safety, sustainability and technical education.**

#### **Leadership and advocacy**

The ASI provides marketing and technical leadership to promote Australian-made steel as the preferred material to the building, construction, resources, and manufacturing industries, as well as policy advocacy to government.

It exists to represent the Australian steel industry and to support its future growth, so that the industry can maintain and create jobs and income for Australia, and provide the highest-quality certified steel products for Australians.

The ASI achieves this by ensuring that political and policy decision makers, industry, consumers, allied industries and professions, and other key stakeholders continue to recognise the strength, beauty and versatility of Australian steel, and the importance of maintaining and growing a strong steel industry sector.

### **Coordination**

The ASI acts as the focal point for the steel industry, providing leadership on all major strategic issues affecting the industry. It focuses particularly on economic, environmental and social sustainability matters, and works with government, the media and other associations to provide an independent voice for industry. This includes promoting the advantages of local content procurement in the nation's interest, both to the client and to government.

### **Technical Support**

The technical support arm of the ASI facilitates events and technical training at both shop floor vocational and degree qualified continuing professional development level, as well as case study seminars and awards. The ASI also publishes industry-leading journals based on the latest research.

The technical references provided through the ASI's electronic online resources and library are amongst the most comprehensive in the southern hemisphere. With longstanding links to global research capability and other steel industry associations such as the World Steel Association, the ASI can offer a truly international solution.

### **Australian Steel Institute**

Suite G1 Ground Floor  
25 Ryde Road  
Pymble NSW 2073  
Australia  
P: +61 2 8748 0180  
E: [enquiries@steel.org.au](mailto:enquiries@steel.org.au)  
W: <https://www.steel.org.au/>

## 4. Competitive advantages of the Australian Steel Industry

Australia has a highly skilled, well-equipped steel supply chain that has evolved over many years. Thousands of businesses throughout the country provide steel manufacture, design, detailing, fabrication, surface treatment and construction services. These industry players have a long history of successfully working together to deliver major projects, manufacture everyday consumer products, enable nation building initiatives, supply custom designed rural products, through to all types of residential construction, thereby providing clients with seamless, efficient, cost-effective steel solutions.

***Choosing to partner with the Australian steel supply chain will ensure optimum mitigation of risks associated with the cost, quality, supply surety, compliance and safety of all steelwork used in a project.***

### Cost Containment

By engaging with the Australian steel supply chain in the early stages of a project, proponents and their partners may derive cost savings that can be built into a project at the initial concept design stage. Quick response and the capacity of the industry to get a project started can lead to significant cost reductions.

The fact that the steel supply chain is *local* can provide multiple, additional value adds:

- Through the implementation of a number of practices, contractors (and therefore the project owner) benefit through cash flows being 'protected'. For example, reducing handling of components, lower onsite inventory levels and pre-production work can free up cash for alternative activities.
- Onsite inspection costs can be significantly reduced where the personnel involved are resident in the region.
- Chances of misinformation and mistakes in interpreting site plans, local regulations and environmental matters can be minimised, providing a significant financial benefit by reducing the need for re-work.
- By meeting certified standards, exacting specifications and having a 'right first time' culture, Australian suppliers further eliminate the need for costly re-work.
- Inspection costs can be significantly reduced, compared to alternate supply of fabricated steel, which may require many overseas visits.

- There are savings to be made in various administration costs such as bank and other associated costs compared to the imported alternative.
- 'Whole of life' costs, including equipment maintenance and service costs are reduced when local subcontractors are part of the construction team and remain available on completion of the major works. Local companies have the ability to source replacement parts (or parts that may need to be re-engineered to certain specifications) and service a project's ongoing needs.

## **Supply Surety**

Fabricated steelwork is often on the critical path of major projects, with supply and construction schedules usually tight. Delays or site rectification of the steelwork typically has serious ramifications for the project as a whole. Working together, the Australian steel supply chain can overcome many obstacles that negatively impact on-time delivery of steel components to a project:

- The likelihood of having to make design changes either at short-notice, or at a late stage in a complex project is high. The ability of locally-based companies to be innovative and respond to changing conditions or variations to the original planning and design work is easily accommodated. Regular face-to-face contact between the fabricator and detailer ensures that when design or site erection schedule changes arise, delays are minimised. Additionally, the industry is serviced by a network of steel distribution centres throughout Australia that stock a depth and range of all steel products thus enabling fabricators to quickly source material to respond quickly and cost-effectively to any changes. Australian steel distributors can also supply processed steel to fabricators to further speed production schedules.
- The high rate of productivity of Australian fabricators, coupled with high integrity quality of workmanship that underpins the industry's 'right first time' culture, ensures on-time, short lead-time, completion of all steelwork.
- Robust and flexible transportation strategies for fabricated steelwork are essential to ensure the overall project schedule is not at risk. Locally fabricated steelwork can take advantage of road, rail or local sea transportation, maximising flexibility and economy in meeting delivery schedules and ensuring that project schedules are met.
- The ability of the local steel supply chain to, if required, provide phased or 'just-in-time' deliveries that dovetail with a project's construction schedule is superior, when compared to alternative fabricated steel supply options.

## **Input Quality**

Poor quality fabricated steelwork can create multiple risks, not only during construction but also for future plant operations. These risks may be heightened by the remoteness of a particular project's location.

From steel manufacture to coatings application, a broad range of independently developed, administered and audited Australian Standards exist, each tailored to regulate specific processes undertaken by each member of the Australian steel supply chain. Compliance to these Australian Standards is the foundation for building input quality for any project.

Additionally, the systems rigour and traceability requirements that adherence to these quality standards demand, can facilitate seamless input to any QA requirements of a project.

Specifically, the following practices contribute to input quality by the local steel supply chain:

- The size, scale and breadth of Australian steel manufacturers' capabilities contribute to their ability to successfully deliver quality steel solutions to their customers. The industry is able to produce special steel grades and control quality through the full production chain – from steelmaking to rolling. Regardless of the specific product or grade required, all steel is manufactured in accordance with Australian Standards. These standards address such matters as inherent attributes of the steel itself, product testing, certification procedures and dimensional tolerances. Australian steel manufacturers guarantee the quality of the steel products they manufacture by certifying compliance with these independently established Australian Standards. Additionally, local steel manufacturers hold ISO Quality Management System Accreditation (ISO 9001), third party quality accreditation.
- Domestic steel manufacturers have technical teams with significant experience and expertise in working with other members of the steel supply chain and their clients, to provide input to the design process or optimise existing designs by ensuring the most suitable quality grades of steel are chosen for particular applications, or offer advice on Best Practice for steel processing.
- A highly skilled workforce, trained in the latest steel fabrication techniques and welding processes characterises the Australian fabrication industry. This team, coupled with investment in the latest plant and equipment, such as plate roll forming equipment, CNC beam lines, angle lines and plasma cutting lines, provides a robust platform on which to fabricate steel of exacting quality. Design, fabrication and erection of fabricated steelwork is governed by various Australian Standards and welding specifically by AS1554 (read more about these in sections 6 and 7 of this document) which lead to reduced instances of onsite rectification due to poor quality, inaccurate or incomplete fabrication.

- The local steel industry has become accustomed to satisfying the demands of project proponents and their partners for quality records and traceability. Provision of documentation is not limited to that governing traceability and compliance of steelwork. It includes materials for cleats and fitments, bolts and welding consumables as well as welding records, NDT records, and fabrication inspection records. Without such traceability a project may not only be at risk of compromising quality and being unable to meet reporting requirements, but also risk schedule delays associated with achieving compliance.

## **Safety Secured**

The Australian steel supply chain is invested in the social bond of caring for those who work in the industry and those markets that we serve. The industry demonstrates a strong commitment to work, health and safety (WH&S), believing that all injuries, occupational illnesses and incidents are preventable. Steel manufacturers take pride in global-industry-low, benchmark levels for Lost Time Injury Frequency Rates (LTIFR) and Medical Treatment Injury Frequency Rates (MTIFR). This safety performance is underpinned by wide-scale safety improvement plans, driven by executive leadership from the local steel manufacturers.

## **Proven Track Record for Large Projects**

Australia's large mining and processing industries have over many decades spawned a competitive steel construction industry capable of servicing major projects and delivering quality. The track record of the industry is one of continual improvement in all facets of fabricated steel supply to large projects resulting in optimum risk mitigation for project proponents and their partners.



## 5.A. Steel manufacturing

Australian steel is recognised around the world for its quality and product consistency. The annual capacity of Australian steelmakers is 5.3 million tonnes of which nearly 70% is used for industrial, commercial and residential buildings, bridges, towers and masts, maritime structures, mining and materials handling projects<sup>2</sup>.

The integrated Australian steel chain typically holds more than two million tonnes of inventory, made available through distributors located at over 300 sites across the country<sup>2</sup>. This means in practice that projects in any location, even remote areas can be flexibly supported with efficient logistics capability.

Australia is well served by four steel producers that operate an array of modern facilities across the country, [BlueScope Steel](#) (which mostly produces flat steel products), [Liberty Primary Steel](#) (making mostly hot rolled structural and rail long steel products), [InfraBuild](#) (reinforcing products, merchant bar and pipe & tube), and [Molycop](#) (making grinding media, railway products, and niche forgings).

### BlueScope Steel

BlueScope Steel Limited is an international steel solutions company with a manufacturing and marketing footprint that spans Australia, New Zealand, Asia and North America. It employs more than 14,000 people and operates 91 manufacturing plants in 17 countries around the world.

#### Manufacturing Facilities

BlueScope Steel has vertically integrated operations for flat steel products in Australia and New Zealand including steel slab, hot rolled coil, cold rolled coil, steel plate and value-added metallic coated and painted products.

It is also a designer and manufacturer of pre-engineered steel buildings and building solutions products. The Australian Steel Products division employs around 6,000 employees at more than 50 facilities and over 50 distribution centres in Australia. It incorporates:

- Port Kembla Steelworks - an integrated steelmaking operation with an annual production capacity of approximately 3.0 million tonnes of crude steel. It is the largest manufacturer and supplier of flat steel in Australia by volume and manufactures slab, hot rolled coil and plate products.

---

<sup>2</sup> <https://www.steel.org.au/about-us/our-industry/>

- Metallic coating facilities located in Springhill, NSW (three lines; 825kt/a capacity) and Western Port, VIC (three lines; 830kt/a capacity).
- Steel painting facilities located in Springhill, NSW (one line, 200kt/a), Western Sydney, NSW (one line; 120kt/a), Western Port, VIC (two lines, 330kt/a) and Acacia Ridge, QLD (one line; 95kt/a).
- Export trading offices based in North America, Europe, the Middle East and Asia.

Through its focus on cost efficient manufacturing and strong brand recognition for products such as COLORBOND® steel and ZINCALUME® steel, the company enjoys a strong reputation in each of the Australian and New Zealand sectors in which it operates, serving customers in the building and construction, engineering construction, manufacturing, automotive and transport, agricultural and mining industries.

Its flat steel product range is produced to exacting standards with products being manufactured to Australian and International Standards providing a known level of quality with full traceability. All manufacturing facilities have quality management systems accredited to ISO 9001:2008. This accreditation is actively maintained and audited, ensuring a mature and fully functional system. BlueScope Steel is committed to the principles of quality assurance, thereby increasing customers' confidence of the project being delivered to the required quality standards.



BlueScope Steel Port Kembla Hot Strip Mill finishing stands control room.

## Customer Service

BlueScope Steel also operates a national network of service centres and steel distribution sites throughout Australia. BlueScope Distribution can fill customers' material needs from its Australian network of more than 70 processing and distribution sites.

Products stocked include steel plate, sheet and coil, reinforcing fabric, bar and building products, merchant bar, structural steel, tubular, engineering steel and aluminium products. It offers quality processing services which range from simple length-based cutting of bar and tube products to complex multiple precision processing on world standard CNC controlled beam line and plate line installations. Providing customers with metal in the form they need helps reduce customers' costs, lead-times and waste.

For steel-intensive projects, BlueScope Steel collaborates with both BlueScope Distribution and other ASI-affiliated steel distributors as well as steel fabricator customers to provide 'flowed' deliveries of steel to meet project production schedules to reduce project costs by minimising sorting, handling and storage. The need to 'jump-start' projects is also easily accommodated given the ready availability of its standard product range from the Australia-wide steel distributor network or on short lead times from mills for non-standard products.

BlueScope Steel has an experienced technical team that supports projects by providing advice regarding the 'best-fit' steel grade for a particular application from its current product range, advice on international equivalent steel grades that BlueScope Steel can produce, or even working with project proponents to develop new, modified steel grades, tailored to provide optimum application performance.

To simplify the process of ordering steel and doing business with BlueScope Steel, its e-commerce trading hub [www.bluescopesteelconnect.com](http://www.bluescopesteelconnect.com) provides online access 24 hours a day, seven days a week. Its *OrderIntegrator* system for single point data entry delivers time savings, productivity enhancements and reduced error potential while giving more control over orders

## Safety and the Environment

BlueScope Steel's fundamental belief is that all injuries can be prevented. The company is committed to its goal of Zero Harm for all its employees and contractors, anywhere in the world. The company's injury levels are at World Best standards with its Lost Time Injury Frequency Rate (LTIFR) at 0.62 and Medically Treated Injury Frequency Rate (MTIFR) at 5.4 as of FY 2018<sup>3</sup>.

BlueScope Steel is committed to caring for the environment and choosing to do what is right. It takes action within its businesses and works with partners to continually improve its environmental footprint. The company has adopted comprehensive environmental governance arrangements and management systems to ensure it achieve those goals. In addition to its compliance obligations, BlueScope Steel has undertaken a range of initiatives to reduce the company's environmental footprint (refer *11-Environmental Sustainability*).

## **Liberty Primary Steel**

Liberty Primary Steel's Whyalla Steelworks, located in Whyalla, South Australia is an integrated steelworks with current capacity of approximately 1.25Mt/a of cast steel and hot rolled products.

Liberty Primary Steel produces custom made hot rolled structural, rail and sleeper products for the construction and transport markets

Liberty Primary Steel sources its key raw materials in iron ore, coal and limestone from Australian mining operations owned by its parent company.

## **InfraBuild**

InfraBuild has a rich history spanning more than 100 years, playing an integral role in the nation building of Australia.

The name reinforces InfraBuild's commitment to and investment in the innovation, manufacturing and supply of solutions and products to the rapidly developing construction of nation-building infrastructure in Australia, along with commercial and residential construction, and the fabrication, manufacturing, mining and rural sectors.

InfraBuild includes InfraBuild Construction Solutions, InfraBuild Steel Centre, InfraBuild Recycling, InfraBuild Wire (Manufacturing) and InfraBuild Steel (Manufacturing), ARC and ATM.

InfraBuild and Liberty Primary Steel together form Australia's largest integrated manufacturer and supplier of steel long products and solutions – including hot rolled structural steel, reinforcing bar and mesh, merchant bar, pipe and RHS, rod and wire and building products – enabling the construction of steel-framed buildings, buildings framed in concrete and nation-building infrastructure projects. InfraBuild is also a trusted supplier to the manufacturing, housing, mining and agricultural industries.

All of InfraBuild's outputs are manufactured to the highest level of Australian and New Zealand Standards and are independently accredited by the Australasian Certification Authority for Reinforcing and Structural Steels (ACRS).

### **InfraBuild Steel (Manufacturing)**

At its manufacturing sites in Victoria and New South Wales, InfraBuild Steel operates two electric arc furnaces with steel production capacity of approximately 1.5Mt/a, and four rod and bar rolling mills. Steel billet is also sourced from Liberty Primary Steel.

InfraBuild Steel manufacturer of rod and reinforcing bar products for construction applications, merchant bar for general applications, and specialty bar and wire for manufacturing applications in Australia, principally supporting the resource sector.

### **InfraBuild Wire (Manufacturing)**

InfraBuild Wire is Australia's leading manufacturer and supplier of wire products.

InfraBuild Wire operates three wire mills and is Australia's largest manufacturer of wire for construction, manufacturing and rural applications. InfraBuild Wire includes Waratah Fencing and Cyclone Products supplying agricultural products, including fencing, silos and hardware to the agricultural market, and manufacturers wire used to manufacture anything from nails to wire rope for massive draglines in mining.

## **Austube Mills**

With a history dating back to the 1930s, Austube Mills has evolved

They have also developed a range of world-class DuraGal and DuraPrimed coatings designed to meet the needs and conditions of Australia. With manufacturing facilities in Acacia Ridge (QLD) and Newcastle (NSW), they are well equipped to service domestic steel pipe and tube markets in Australasia.

They are supported by more than 200 distribution networks across Australia and New Zealand.

For further information and complete product range information, visit

[www.austubemills.com.au/](http://www.austubemills.com.au/)

### **InfraBuild Recycling**

InfraBuild Recycling specialises in the safe handling, collection and processing of more than 1.4Mt/a of ferrous and non-ferrous scrap metal every year, distributing it to InfraBuild Steel's Australian steel mills and international customers. InfraBuild Recycling operates nationally from 22 locations in Australia as well as several in Asia and across the globe.

The recycling business is a significant contributor to the raw material requirements of Australia's steel industry and provides a sustainable alternative to landfill, capturing the full value-in-use of the materials recycled.

### **InfraBuild Steel Centre**

Australia's only fully integrated supplier of metals and building products, with an extensive network of branches covering all major cities and regional areas.

InfraBuild Steel Centre supports customers in key industries including engineering, infrastructure, commercial and residential construction, fabrication, manufacturing, mining and rural. InfraBuild Steel Centre services over 10,000 customers and has extensive expertise in providing engineering and design optimisation to minimise risk while reducing waste and cost.

### **InfraBuild Construction Solutions**

Australia's premier supplier of steel reinforcing construction solutions supported by a national network of branches.

InfraBuild Construction Solutions is a full-service reinforcing supplier to tier 1 builders and mega infrastructure projects across Australia. It is one of Australia's premier suppliers of steel reinforcing solutions for commercial, residential and civil construction and mining industries. InfraBuild Construction Solutions' national network of branches services customers Australia wide, supplying quality custom prefabricated reinforcing solutions, products and accessories to both Australia's largest construction companies and the home renovator.

### **Customer Service**

The products supplied by InfraBuild include hot rolled structural steel, rod and bar, reinforcing, wire, tube, pipes and hollow sections, fittings, valves, and recycled metals. InfraBuild's products are used across industries including construction, manufacturing, housing, resource, mining and agriculture.

InfraBuild has standardised product identification and scanning processes to dramatically improve productivity and customer quality outcomes. Working with global leaders in supply chain tracking GS1, InfraBuild has developed and implemented GS1's DataMatrix barcode and product identification tagging technology across its manufacturing sites nationally to deliver globally unique identification of products at a bundle level.

By using this identification technology, InfraBuild can demonstrate the compliance certification and sustainability credentials of a large volume and wide variety of products, plus ensure certainties of cost and reliability of on-schedule delivery directly to site. It can also

reduce the impact of construction projects on communities by accurately scheduling and minimising truck movements to sites. It does all this with a scrupulous attention to safety for the workforce and the general public.

To assist industry, InfraBuild Steel has developed its EzyCommerce® solution.

EzyCommerce® is a suite of internet-based solutions to provide transactional information to its customers in a simple and efficient manner. By working to industry standards, we want to make it as easy as possible to do business together – ‘Electronic Commerce Made Ezy’.

InfraBuild Steel Centre’s state-of-the-art processing equipment and expert teams ensure the accuracy, tolerance and repeatability of processing. The company’s integrated supply chain enables the sourcing of an extensive range of complementary products and the scheduling of deliveries to meet customers’ schedules.

InfraBuild Steel Centre has significant expertise in working with customers to provide engineering and design optimisation to minimise risk while reducing waste and cost. Optimising material use can also aid in the sustainability credentials needed for awarding Green Star steel credit points.

InfraBuild Construction Solutions distributes a comprehensive range of reinforcing product and accessories, and has extensive prefabrication and customisation capabilities, with innovative prefabricated products including PROPILE, PROCAGE, CUSTOMCAGE, BAMTEC® and BARMAT™. InfraBuild Construction Solution’s prefabricated solutions comply with all relevant Australian Standards.

The company leverages its in-house product development, engineering support and project management capability to optimise engineering design and manage the sourcing, fabrication and logistics of solutions for its customers in resources, mining and construction industries.

InfraBuild has significant experience and expertise in working in partnership with its customers to provide input into the design process or to optimise an existing design for efficient manufacturing, reduced waste, reduced risk and ultimately reduced cost.

InfraBuild personnel contributed to a range of standardised steel connections published by the ASI. A significant focus of the company’s involvement with these publications was to provide the industry with a range of practical and economical standard connections. As an objective in design is to utilise the available member strengths to a high degree, the connections were developed to achieve the maximum strengths possible (subject to bolt capabilities), while at the same time minimising component sizes for optimum economy. Having a range of connections designed in accordance with the current standards and the latest design models eliminates a great deal of detailed and time-consuming engineering work. These connections have been developed based on InfraBuild’s hot rolled and welded

universal beams and cover many practical situations. With their involvement in this area, InfraBuild's engineers are able to assist customers to apply those connections and develop suitable solutions for alternative design situations, where they arise. This can provide significant efficiencies during design and fabrication.

### **Safety and Sustainability**

InfraBuild's core values of Family, Sustainability and Change demonstrate the depth of commitment within the organisation to achieving the highest performance in occupational health and safety, with the aim of creating and maintaining a safe and healthy work environment throughout its businesses.

InfraBuild believes that the use of sustainable materials in modern Australian building construction is no longer a negotiable. Structurally efficient buildings that optimise resources and make the most of usable space now have an essential role to play in creating green cities that citizens can use now and into the future.

InfraBuild is committed to the role played by steel in the circular economy, including the promotion of the recovery, reuse and recycling of steel and other products. The company is dedicated to conducting its business to global environmental, social and commercial standards.

## **Molycop**

Molycop Australasia is part of the Molycop Group, which is the largest supplier of mining consumables in the world. Group installed manufacturing capacity is in excess of 1.8 million tonnes per annum from twelve locations. In Australia, Molycop produces forged grinding media, a wide range of bar products, railway products, and specialty forgings. Primary steel production is carried out at Waratah, NSW. Grinding media production facilities are located at Waratah, and Bassendean, WA.

### **Production Facilities**

The Waratah, NSW plant includes Electric Arc Furnace (EAF) steelmaking, continuous casting, ingot casting, and bar mill facilities. Grinding media is produced using both roll-forming and upset forging processes. The Railway products plant takes large ingots and converts them into finished wheel and axle sets using a fully integrated manufacturing process. Ingots of up to 56 tonnes can be cast in the specialty products plant. The specialised steelmaking facilities are complemented by equipment for steel degassing, fine composition adjustment, and a wide range of ingot mould, as well as forging and heat treatment capabilities.



The Bassendean, WA plant produces forged grinding media and specialty fasteners for mineral processing applications such as SAG mill liner bolts.

### **Products and Brands**

In the grinding media sector, SAG Balls are produced from 4 inch to 6.25 inch diameter, whilst Ball Mill Balls are available from 1 inch to 4 inch diameter. Rod Mill Rods are produced in a similar diameter range. After considerable in-house and in-field testing Molycop has recently developed a superior, high performance SAG ball – ‘Molycop NG’. The ball is manufactured using an innovative, proprietary manufacturing process that has resulted in a tougher SAG Ball, with higher impact and spalling resistance.

Specialty fasteners are sold under the Donhad Fastener brand.

Railway products are sold under the Comsteel brand. Comsteel produces forged and rolled railway wheels to international standards for all classes of rolling stock. In particular the company is at the forefront in developing products for higher axle loading. New materials and designs for specific applications such as high hardness and wear resistant wheels have been developed by Comsteel. These wheels deliver improved performance in heavy haul, freight, passenger and locomotive applications.

### **Grade Capability**

Molycop has the ability to produce almost any grade of steel including all grades covered by the following Australian Standards:

AS3679 – Hot-rolled Structural Steel Bars and Sections.

AS1442 – Carbon Steels and carbon-manganese steels – Hot-rolled bars and semi-finished products.

AS1444 – Wrought Alloy Steels – Standard, hardenability (H) series and hardened and tempered to designated mechanical properties.

AS4671 – Steel Reinforcing Materials (ACRS D-bar accredited).

BS5892 – Part 3 British Standard Railway Wheels

AAR M1003 – Association of American Railways - Quality Assurance

AAR M107 / 208 – Association of American Railways - Railway Wheels

EN13262 – European Railways Accreditation

### **Quality Assurance**

ISO 9001 – 2015 Quality Management System

NATA approved Chemical and Mechanical Laboratory

## Orrcon Steel

Orrcon Steel is a manufacturer and distributor of steel tube and pipe in Australia owned by BlueScope Steel. Orrcon Steel's distribution centres are strategically located in Queensland, New South Wales, Victoria, South Australia, Northern Territory and Western Australia, providing a national distribution network, which is complimented by the rural products focussed Metalcorp branch network, as well as an extensive spread of distributors and stockists in metropolitan and rural Australia.

### Manufacturing Locations and Scope

- **Brisbane** – Structural tube and pipe mills with inline painting, 30T coil splitter and electro-galvanizing plant. Providing ready-primed and zinc coated ERW product, manufactured for structural and low-pressure applications. This includes Orrcon Steel's own range of ALLGAL®, as well the ULTRASPEC-GAL® range of zinc coated Z275 (ZB135) products to meet the National Construction Code.
- **Adelaide** – Precision tube mill manufacturing cold rolled, hot rolled, zinc, and aluminium coated ERW steel tubing rolled to precise sizes and wall thicknesses. The MECSPEC-GAL® tube product range provides a local source of pre-galvanized mechanical tube and a viable alternative to imported HDG pipe in low through to moderate corrosive environments.

### Additional Products available through Orrcon Steel & Metalcorp distribution

- Merchant bar (e.g. flats, rounds, squares and angles)
- Hot rolled structural (Columns, Beams, Channels)
- Hot Dip Galvanized Pipe
- Fencing, wire, welding products, mesh, sheet, gates and roofing.
- Metalcorp's Australian made Cattle Crushes, Ramps, Panels, Grids and Feeders.

### Quality Management Systems and Product Standards

Orrcon Steel's Quality Management System is certified to ISO 9001, and the Brisbane site testing facility is NATA accredited to ISO 17025. Tubular products are manufactured, inspected and tested to comply with one or more of the following Standards or schemes:

- Structural – AS/NZS 1163 Cold-formed structural steel hollow sections.
  - Third party certified by ACRS
- Low pressure pipe - AS 1074 - Steel Tubes and tubulars for ordinary service.
- ALLGAL® standard AS4750 Electro-galvanized (zinc) coating on ferrous hollow and open sections.

- Additional zinc coatings as per applicable Standards, AS4792, AS1397
- ORRFIRE® range of CSIRO ACTIVFIRE® certified sprinkler and hydrant pipe
- Precision – AS 1450 Steel tubes for mechanical purposes, made to meet the demands of industry in all aspects of the product.

For further information and complete product range information, visit [www.orrcon.com.au](http://www.orrcon.com.au).

## **Australian Pipe and Tube (APT)**

Australian Pipe & Tube is a privately owned, Australian company, specialising in the manufacture of the highest quality (to Australian Standards) tubular steel products. APT's state-of-the-art tube mill in Victoria specialises in manufacturing RHS, CHS & SHS tubular steel products.

Australian Pipe and Tube hollow structural sections are manufactured in full compliance with Australian Standard AS1163 which is one of the world's most advanced standards. Used in industries ranging from mining to agricultural, APT Painted and APT Galv are certified to Australian standards and backed by local technical support.

For further information and complete product range information, visit [auspipetube.com.au/](http://auspipetube.com.au/)

## **Bisalloy Steels**

Bisalloy Steels is Australia's only manufacturer of high-tensile and abrasion-resistant quenched and tempered steel plate used for mining, armour, structural and wear-resistant steel applications. Bisalloy supply manufacturers and end-users in a vast array of industries including mining, construction, quarrying, general fabrication and buildings, pressure vessel and defence. Products which are marketed under the brand name BISALLOY® are supplied both direct to customers and through an extensive distribution network across Australasia, Indonesia, Thailand, Peoples Republic of China, South Africa and the Middle East.

### **Product Range**

- BISALLOY® WEAR steel is the number one performance steel choice of countless industries because of its remarkable hardness and ability to withstand the toughest wear and tear.
- BISALLOY® STRUCTURAL steel can enable manufacturers, engineers, industrial designers and architects to deliver size, weight and cost savings while still achieving required levels of strength and performance.
- BISALLOY® ARMOUR steel has become the first choice in defence applications here and abroad and is specified for hulls in Armoured Personnel Carriers (APC), Light Armoured Vehicles (LAV) and the Bushmaster Infantry Mobility Vehicles in Australia, along with many APCs and LAVs worldwide.
- BISALLOY® PROTECTION steel range offers tested and certified, lighter weight plate products with superior ballistic performance to suit a wide range of applications for the protection of life, valuables and property.

### **Technical Assistance**

Bisalloy has a range of technical and product data available to support its range of Australian made high performance steel products. With locally based technical experts and its own NATA accredited laboratory, Bisalloy can provide personalised, value-added technical support to all customers in every state. Bisalloy has the capacity to manufacture hard wearing and specialty steels to suit your applications and environment.

### **Sustainability**

Bisalloy Steels is proud to know its performance steel grades are also delivering lighter, stronger and more sustainable steel options which, by their very nature, are increasing energy savings.

Bisalloy Steels also takes a tough approach to protecting the environment in all their steelmaking processes. They are passionate about the environment and continually measure the environmental performance of their plant. Energy consumption and carbon emissions have been regularly reported to the Clean Energy regulator since 2009. Rainwater is harvested for quenching processes, waste furnace gasses are utilized to preheat plates entering the heat treatment process, and they actively promote the limitless recycling opportunity of products throughout their lifecycle.

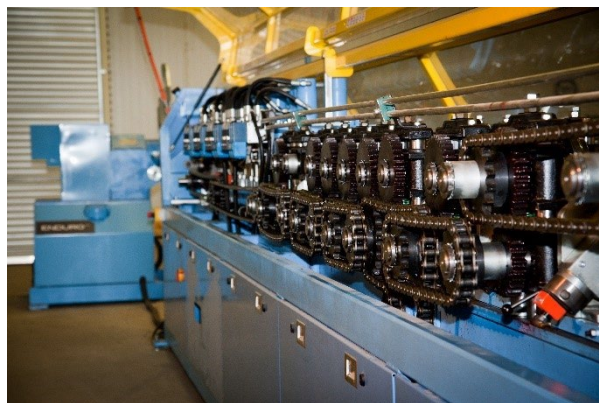
For further information and complete product range information, call 1300 BISALLOY or visit [www.bisalloy.com.au](http://www.bisalloy.com.au)

## 5.B. Roll-forming

Cold-formed light gauge steel members and profiled sheeting are produced from steel strip usually supplied in coil form from the steel mill. In Australia, BlueScope Steel Limited is the predominant manufacturer of steel strip. Cold-rolled coil is usually supplied in the range 3.5mm to 0.3mm in thickness and is generally metal coated, either galvanized or ZINCALUME®. Additional continuous coating processes, such as painting, may be applied after metal coating.

The coils of steel strip begin the process of being turned into cold-formed steel sections and profile sheet with being uncoiled, slit into appropriate widths and then cold-formed into the required final profile shape, usually by a continuous process passing through a number of roll stages to form the final product shape. These processes are undertaken by **roll formers**, who may work as contract businesses tooling up and producing a range of specialist section shapes for various clients, or at dedicated facilities working in-house with manufacturers of specific product lines for purlins, girts, structural framing, profiled sheeting or metal decking.

The final cold-formed light gauge steel products have any secondary finishing processes applied (e.g. cutting, punching) and then are packaged for delivery to either distribution centres, stockists or builders.



Roll forming machine operation. Image courtesy Enduroframe®.

For certain product types it is logistically easier and more economical to roll the product on site and then directly install onto the final structure. In this case, the roll forming machinery is usually truck mounted and brought to site.



ARAMAX wide span roofing is rolled on site. Image courtesy Bay & Coast Metal Roofing.



## 5.C. Distribution

A network of steel distribution facilities exists across Australia with state-of-the-art processing and stock control systems to support demanding project schedules. These businesses carry large stocks throughout the branch network giving excellent availability of the full range of steel products.

Leading distributors include InfraBuild Steel Centre, BlueScope Distribution (Sheet Metal Supplies), Orrcon Steel, Metalcorp, Southern Steel Group (Brice Metals, Southern Sheet & Coil, Surdex), United Steel, Mesh & Bar, and Coil Steels. These all have a national footprint and providing the full range of steel products to resellers and end-users including merchant bar, pipe and tube, structural steel sections, steel plate, angles, channels, flat sheet, reinforcing steel, sheet steel and coil, roofing and rainwater goods, purlins, battens and studs. Some distributors also carry a range of stainless steel, aluminium products and pipe fittings and valves.



Reinforcing businesses process, fabricate and coordinate the distribution of reinforcing bar and mesh throughout Australia for the construction, mining and oil and gas industries (refer section 8 for more information).

The integrated Australian steel channel typically holds in excess of two million tonnes of inventory providing project proponents with confidence that the industry can promptly and effectively respond to a project's steel requirements when and where they need them. Local availability dramatically reduces the need for projects to maintain large inventories onsite and greatly reduces the schedule risk for a project.

Not only do Australian distributors offer large stocks, but they also offer steel processing on equipment which includes CNC beam lines, angle lines, band saws and cropping lines capable of processing the full range of structural steel, merchant bar, pipe and tube products.



Plate processing capabilities include laser, plasma and oxy-fuel cutting, drilling, counter-sinking, boring, bevelling and marking of the biggest available plate. By using these processing facilities customers are able to substantially increase their productivity allowing them to take on larger projects, finishing them faster and within budget. They also benefit from reduced handling, the elimination of mistakes and the reduction of waste.

Australian steel distributors are accustomed to working closely with project designers, steel fabricators and other contractors to ensure that the optimal steel product, compliant with all relevant standards and fully traceable, is available where and when it is required.

Consequently, unnecessary and costly delays can be avoided.

Distributors add considerable value to the management of projects by:

- Maintaining significant stocks of steel.
- Advising on the best use of steel lengths and plate sizes for minimum yield loss, thereby maximising cost savings.
- Supplying quality processing as needed to customers' exact requirements.
- Providing timely deliveries, coordinated to projects' construction schedules and in cooperation with other suppliers.

Australian distributors are located at over 300 sites across the country and offer a depth and breadth of range, coupled with logistics, supply chain, processing capability and expertise to facilitate fast, flexible and reliable delivery of product to all Australian steel users.

**For further information, visit:**

[BlueScope Distribution](#)

[InfraBuild Steel Centre](#)

[Southern Steel Supplies](#)

[Coil Steels](#)

[United Steel](#)

[Mesh and Bar](#)

[Horan Steel](#)

[Vulcan](#)

[Orrcon Steel](#)

[Metalcorp](#)

## 5.D. Fabrication

### Fabrication Overview

The Australian structural fabrication industry is characterised by a very large number of fabricators with a total output capacity of approximately 1.6 million tonnes per annum, including some product used in repetition manufacturing, lintels, truck body and trailer fabrication<sup>4</sup>. One of the largest the steel industry sectors, Australian structural steel fabricators have committed heavily to new technology in recent times to meet the demands of new resources and infrastructure investments head on.

This investment takes in the latest technology in new overhead cranes, plate rolling equipment, CNC beam lines, angle lines and plasma cutting lines. The fabricators are increasing their capability and capacity and investing in Australia's future not only by installing new plant but also by keeping skills in Australia to build and maintain a sustainable steel manufacturing sector.

This investment has seen the fabrication steel processing capacity increase by close to 30 percent. The sector has ample capacity in reserve and is more cost competitive due to this recent investment in automation.

### General Fabrication

The medium and larger fabricators (2,000 to 20,000 tonnes per annum capacity) process approximately 1.1 million tonnes annually with a large shift from labour-based fabrication to CNC, beam lining, angle lines and plasma and gas profile cutting. A trend is for fabricators to invest in detailing or to have close liaison with detailers to enable the benefits of computer files to drive their CNC equipment. Automotive style processing is progressively being applied to plate profiling, line marking, identification marking, drilling and tapping and where required, weld preparation.

A characteristic of steel fabrication in recent years has been the move to introduce technology throughout the steel value chain, including processing facilities at distribution level.

New and innovative business models are being developed with better interface in the technology areas between engineers and detailers, and the fabricator. Flowing from the UK experience, we are seeing an emergence of the Design and Construct Steel Contractor assuming an increased share of design and erection for the entire steel component.

---

<sup>4</sup> <https://www.steel.org.au/about-us/our-industry/>

This market segment includes portal frame buildings such as factories and warehouses and commercial buildings such as offices, shops, schools, health and civic facilities. Steel brings advantages in speed of construction, lightweight and reduced foundation costs and a smaller manufacturing footprint to the construction site as most fabrication is off-site in more secure and safer manufacturing environments.

The Australian fabrication industry capacity is extended by the outsourcing of some functions to specialist processors and coaters. A community of specialist subcontractors augment the fabrication capacity in:

- Steel detailing
- Blast cleaning
- Painting
- Hot dip galvanizing
- Non-destructive testing
- Grating and handrail manufacture
- Bending
- Transportation

Fabricators will often specialise in structural steel, pipe fabrication, plate fabrication or mechanical fabrication. This has served the industry well, maintaining capability, cost effectiveness and flexibility. In fact, fabricators often specialise in certain market segments which makes them more competitive and profitable in these segments.

This paper assumes that reference to 'fabricators' covers all these disciplines. Refer to the Australian Fabricator Listing with approximate capacity tonnes indicated in the following pages.

The leading fabrication firms are equipped with state-of-the-art CNC automated fabrication equipment and are adept at utilising electronic information direct from the Engineer or Detailer to run fabrication machines. This improves cost and quality and enables 'just in time' processing and erection.



## **Fabricator Quality**

The Australian steel industry is based around the integrated nature of Australian Standards. For example, the material specifications of Pipe and Tube (AS/NZS1163) and the structural sections Specification (AS/NZS3678, AS/NZS 3679.1, AS/NZS 3679.2) feed into the design requirements of AS4100 and AS3600 which are called up in the Building Code of Australia.

Significant to this structure is the welding code, AS1554. For special purpose welds, the welder needs to be qualified and tested and the equipment used calibrated and approved through the production of tested samples.

Australian fabricators maintain a system of apprenticeships to renew and update the skill levels in this country and to ensure training so that the skill sets to the relevant standards are maintained.

Similarly, the importance of a steel structure is dependent on the coating scheme which must be applied onsite or handled well to the site. These requirements defray significant on-costs from avoiding not getting the specification requirements right the first time.

## Australian Steel Institute Fabricator Member Listing

### New South Wales

Business name	Website	Capacity
CIVMEC Construction & Engineering	<a href="http://www.civmec.com.au">www.civmec.com.au</a>	>10,000
Nepean Engineering & Innovation	<a href="http://www.nepean.com/building">www.nepean.com/building</a>	>10,000
Precision Oxycut	<a href="http://www.steelcutting.com.au">www.steelcutting.com.au</a>	>10,000
S&L Steel Fab Pty Ltd	<a href="http://www.slsteel.com.au">www.slsteel.com.au</a>	>10,000
Adcon Structural Group	<a href="http://www.structuralgrp.com.au">http://www.structuralgrp.com.au</a>	2,000-10,000
Alfabs Engineering Group Pty Ltd	<a href="http://www.alfabs.com.au">www.alfabs.com.au</a>	2,000-10,000
Algon Steel	<a href="http://www.algonsteel.com.au">www.algonsteel.com.au</a>	2,000-10,000
Apollo Fabrication Group Pty Ltd	<a href="https://apollofabrication.com.au">https://apollofabrication.com.au</a>	2,000-10,000
Belmore Engineering	<a href="http://www.belmoreengineering.com.au">www.belmoreengineering.com.au</a>	2,000-10,000
Chess Industries	<a href="http://www.chessindustries.com.au">www.chessindustries.com.au</a>	2,000-10,000
Combelle Steelfab Pty Ltd	<a href="http://www.combell.com.au">www.combell.com.au</a>	2,000-10,000
Crossmuller	<a href="https://www.crossmuller.com.au">https://www.crossmuller.com.au</a>	2,000-10,000
Cullen Steel Fabrications	<a href="http://www.cullensteel.com.au">www.cullensteel.com.au</a>	2,000-10,000
Engineering Fabricators Newcastle	<a href="http://www.efnewcastle.com.au">www.efnewcastle.com.au</a>	2,000-10,000
Ferrocom	<a href="http://www.ferrocom.com.au">www.ferrocom.com.au</a>	2,000-10,000
Flame-Cut Pty Ltd	<a href="http://www.flame-cut.com.au">www.flame-cut.com.au</a>	2,000-10,000
Gonzalez Steel	<a href="https://gonzalezsteel.com.au">https://gonzalezsteel.com.au</a>	2,000-10,000
Hard Bakka Pty Ltd	<a href="http://www.hardbakka.com.au">www.hardbakka.com.au</a>	2,000-10,000
Icon Metal	<a href="https://www.iconmetal.com">https://www.iconmetal.com</a>	2,000-10,000
Knox Engineering Pty Ltd	<a href="https://www.knoxeng.com">https://www.knoxeng.com</a>	2,000-10,000
Kotzur Pty Ltd	<a href="https://kotzur.com">https://kotzur.com</a>	2,000-10,000
Macfab Engineering	<a href="https://macfab.com.au">https://macfab.com.au</a>	2,000-10,000
Mascot Steel	<a href="https://www.mascotsteel.com.au">https://www.mascotsteel.com.au</a>	2,000-10,000
NWEC Pty Ltd	<a href="http://www.nwec.com.au">www.nwec.com.au</a>	2,000-10,000
Universal Steel Construction Pty Ltd	<a href="http://www.universalsteel.com.au">www.universalsteel.com.au</a>	2,000-10,000
WGE Pty Ltd	<a href="http://www.wgegroupp.com">www.wgegroupp.com</a>	2,000-10,000
Ace Construction Australia	<a href="http://aceaustralian.com.au">aceaustralian.com.au</a>	<2,000
ACT Steelworks Pty Limited	<a href="http://www.actsteelworks.com.au">www.actsteelworks.com.au</a>	<2,000
Alfec Industrial Engineering Pty Ltd	<a href="https://www.alfec.com.au">https://www.alfec.com.au</a>	<2,000
Align H	<a href="http://www.alignconstructions.com.au">www.alignconstructions.com.au</a>	<2,000
Amarcon Group	<a href="http://www.amarcon.com.au">www.amarcon.com.au</a>	<2,000
Australian Structural Steel Pty Ltd	<a href="https://australianstructuralsteel.com.au">https://australianstructuralsteel.com.au</a>	<2,000
AWI Steel Pty Ltd	<a href="http://www.awisteel.com.au">www.awisteel.com.au</a>	<2,000
C & V Engineering Services Pty Ltd	<a href="http://www.cvengineering.com.au">www.cvengineering.com.au</a>	<2,000
Coastal Steel Fabrications	<a href="https://coastalsteel.com.au">https://coastalsteel.com.au</a>	<2,000
Cosme-Australia Stainless Steel Fab	<a href="http://www.cosme.com.au">www.cosme.com.au</a>	<2,000
CTB Industries	<a href="https://www.ctb.net.au">https://www.ctb.net.au</a>	<2,000
Designed Building Systems	<a href="http://www.designedbuildingsystems.com.au">www.designedbuildingsystems.com.au</a>	<2,000
DG Harper	<a href="http://www.dgharper.com.au">www.dgharper.com.au</a>	<2,000
Edcon Steel Pty Ltd	<a href="http://www.edconsteel.com.au">www.edconsteel.com.au</a>	<2,000
F3 Industries Pty Ltd	<a href="http://f3industries.com.au">http://f3industries.com.au</a>	<2,000
Fabinox	<a href="http://www.fabinox.com.au">www.fabinox.com.au</a>	<2,000
Ficogi Engineering Pty Ltd	<a href="http://www.ficogi.com.au">www.ficogi.com.au</a>	<2,000

<b>Business name</b>	<b>Website</b>	<b>Capacity</b>
Halley and Mellowes (HMA)	<a href="http://www.hmagroup.com.au">www.hmagroup.com.au</a>	<2,000
HF Hand Constructors Pty Ltd	<a href="http://www.hfhand.com.au">www.hfhand.com.au</a>	<2,000
Hort Enterprises	<a href="http://www.hortenterprises.com.au">www.hortenterprises.com.au</a>	<2,000
Hutchins Bros	<a href="http://www.hutchinsbros.com.au">www.hutchinsbros.com.au</a>	<2,000
Industrial Maintenance and Fabrications	<a href="https://www.imfab.com.au">https://www.imfab.com.au</a>	<2,000
JBK Engineering	<a href="http://www.jbkgroup.com.au">www.jbkgroup.com.au</a>	<2,000
Karuah Enterprises	<a href="https://www.karuah.net.au">https://www.karuah.net.au</a>	<2,000
KS Metal Fabrications	<a href="https://www.ksmetalfab.com">https://www.ksmetalfab.com</a>	<2,000
LA Services	<a href="https://www.la.services">https://www.la.services</a>	<2,000
Mario & Sons Steel Fabrication Pty Ltd	<a href="https://www.marioandsons.com.au">https://www.marioandsons.com.au</a>	<2,000
Motion Group	<a href="https://www.motiongroup.net.au">https://www.motiongroup.net.au</a>	<2,000
NWI Fabrication	<a href="https://nwifabrication.com.au">https://nwifabrication.com.au</a>	<2,000
Pacific Steel Constructions Pty Ltd	<a href="http://www.pacificsteel.net">www.pacificsteel.net</a>	<2,000
Paragon Steel Fabrication	<a href="https://paragonsteel.com.au">https://paragonsteel.com.au</a>	<2,000
Piper & Harvey Steel Fabrications Pty Ltd	<a href="http://www.piperharveysteelfab.com.au">www.piperharveysteelfab.com.au</a>	<2,000
PPW Services Pty Ltd	<a href="https://www.ppw.net.au">https://www.ppw.net.au</a>	<2,000
Precise Way	<a href="https://preciseway.com.au">https://preciseway.com.au</a>	<2,000
Precision Metal Group Aust Pty Ltd	<a href="http://www.precisionmetalgroup.com">www.precisionmetalgroup.com</a>	<2,000
Proline Steel	<a href="https://prolinesteel.com.au">https://prolinesteel.com.au</a>	<2,000
Rambler Welding Industries Pty Ltd	<a href="http://www.ramblerwelding.com.au">www.ramblerwelding.com.au</a>	<2,000
ReelFab Pty Ltd	<a href="https://reelfab.com">https://reelfab.com</a>	<2,000
Riton Engineering Pty Ltd	<a href="http://www.riton.com.au">www.riton.com.au</a>	<2,000
Silo Dev		<2,000
T. Sakkal Group Pty Ltd	<a href="http://www.sakkal.com.au">www.sakkal.com.au</a>	<2,000
Towers Engineering and Fabrication	<a href="https://www.towersengineering.com.au">https://www.towersengineering.com.au</a>	<2,000
TTM Engineering Pty Ltd	<a href="http://www.ttmengineering.com.au">www.ttmengineering.com.au</a>	<2,000
Veolia Fabrication		<2,000
Vulkan Advanced Engineering	<a href="http://vulkanengineering.com.au">http://vulkanengineering.com.au</a>	<2,000
Walpett Engineering Pty Ltd		<2,000
Weldcraft Engineering (ACT) Pty Ltd	<a href="http://www.weldcraft.com.au">www.weldcraft.com.au</a>	<2,000
Wexford Welding	<a href="http://www.wexfordwelding.com.au">www.wexfordwelding.com.au</a>	<2,000

## Queensland

Business name	Website	Capacity
Beenleigh Steel Fabrications Pty Ltd	<a href="http://beenleighsteel.com.au">beenleighsteel.com.au</a>	>10,000
Sun Engineering (Qld) Pty Ltd	<a href="http://www.suneng.com.au">www.suneng.com.au</a>	>10,000
ATW Group Pty Ltd	<a href="http://www.atwgroup.com.au">www.atwgroup.com.au</a>	2,000-10,000
Brown Steel	<a href="http://www.brownsteel.com.au/">www.brownsteel.com.au/</a>	2,000-10,000
CSF Steel Fabricators	<a href="http://www.csfsteel.com.au">www.csfsteel.com.au</a>	2,000-10,000
Casa Engineering Pty Ltd	<a href="http://www.casaeng.com.au">www.casaeng.com.au</a>	2,000-10,000
Central Engineering Pty Ltd	<a href="http://www.ceng.com.au">www.ceng.com.au</a>	2,000-10,000
Idec Solutions	<a href="http://www.idec.com.au">www.idec.com.au</a>	2,000-10,000
JS Welding Services	<a href="http://www.jsweldingservices.com">www.jsweldingservices.com</a>	2,000-10,000
Livingstone Engineering	<a href="http://www.liveng.com.au">www.liveng.com.au</a>	2,000-10,000
M2P Engineering	<a href="http://www.m2pengineering.com.au">www.m2pengineering.com.au</a>	2,000-10,000
Range Steel Fabrications	<a href="http://www.rangesteel.com.au">www.rangesteel.com.au</a>	2,000-10,000
R&F Steel Buildings	<a href="http://www.rfsteelbuildings.com.au">www.rfsteelbuildings.com.au</a>	2,000-10,000
Sencova Steel Fabricators	<a href="http://www.sencova.com">www.sencova.com</a>	2,000-10,000
Steel Fabrications Australia Pty Ltd	<a href="http://www.steelfabau.com.au">www.steelfabau.com.au</a>	2,000-10,000
Taringa Steel P/L	<a href="http://www.taringasteel.com.au">www.taringasteel.com.au</a>	2,000-10,000
Universal Welding Services	<a href="http://www.universalwelding.com.au">www.universalwelding.com.au</a>	2,000-10,000
W D T Engineers Pty Ltd	<a href="http://wdtengineers.com.au">wdtengineers.com.au</a>	2,000-10,000
Watkins Steel	<a href="http://www.watkinssteel.com.au">www.watkinssteel.com.au</a>	2,000-10,000
AA Steelworks	<a href="http://www.aasteelworks.com">www.aasteelworks.com</a>	<2,000
Base Fab	<a href="http://www.basefab.com.au">www.basefab.com.au</a>	<2,000
BME Australia	<a href="http://www.bmeaust.com.au">www.bmeaust.com.au</a>	<2,000
Brezac Constructions	<a href="http://brezac.com.au">brezac.com.au</a>	<2,000
BridgeFab	<a href="http://www.bridgefab.com.au/">www.bridgefab.com.au/</a>	<2,000
Caneland Engineering	<a href="http://www.caneland.com.au/">www.caneland.com.au/</a>	<2,000
Coastal Engineering	<a href="http://www.coasteelengineering.com.au">www.coasteelengineering.com.au</a>	<2,000
Colemans Group (Aust) Pty Ltd	<a href="http://www.colemansgroup.com.au">www.colemansgroup.com.au</a>	<2,000
Compliant Steel	<a href="http://www.compliantsteel.com.au">www.compliantsteel.com.au</a>	<2,000
Cooroy Engineering	<a href="http://www.cooroyengineering.com.au">www.cooroyengineering.com.au</a>	<2,000
Eastern States Engineering	<a href="http://www.esengineering.net.au">www.esengineering.net.au</a>	<2,000
Engineering Applications Pty Ltd	<a href="http://www.engapp.com.au">www.engapp.com.au</a>	<2,000
First-Line Engineering	<a href="http://www.firstlineengineering.com">www.firstlineengineering.com</a>	<2,000
GM Poles Pty Ltd	<a href="http://www.gmpoles.com.au">www.gmpoles.com.au</a>	<2,000
HVAC Queensland Pty Ltd	<a href="http://www.hvac.com.au">www.hvac.com.au</a>	<2,000
Jag Welding	<a href="http://www.jagwelding.com.au">www.jagwelding.com.au</a>	<2,000
Kyst Engineering	<a href="http://www.kyst.com.au">www.kyst.com.au</a>	<2,000
Lazco Fabrications	<a href="http://lazcofabrications.com.au/">lazcofabrications.com.au/</a>	<2,000
Logan Steel Pty Ltd	<a href="http://www.logansteel.com.au">www.logansteel.com.au</a>	<2,000
Mayfair Engineering & Aluminium	<a href="https://mayfairfab.com.au/">https://mayfairfab.com.au/</a>	<2,000
Micad Industries		<2,000
Morton Steel Pty Ltd	<a href="http://www.mortonsteel.com.au">www.mortonsteel.com.au</a>	<2,000
Noosa Engineering & Crane Hire	<a href="http://neach.com.au/">neach.com.au/</a>	<2,000
Norfab (QLD) Pty Ltd	<a href="http://www.norfab.com.au">www.norfab.com.au</a>	<2,000
PSF QLD Pty Ltd	<a href="http://www.psfsteel.com.au">www.psfsteel.com.au</a>	<2,000

<b>Business name</b>	<b>Website</b>	<b>Capacity</b>
Richards Steel Fabrication	<a href="http://www.richardssteel.com">www.richardssteel.com</a>	<2,000
SKOPIT	<a href="http://www.skopit.com.au">www.skopit.com.au</a>	<2,000
Strathdickie Smithy Steelworks		<2,000
Steelman	<a href="http://www.steelman.com.au">www.steelman.com.au</a>	<2,000
Vancisco Industries Unit Trust	<a href="http://www.vanciscoindustries.com.au">www.vanciscoindustries.com.au</a>	<2,000
Versatile Manufacturing		<2,000
Widgee Engineering	<a href="http://www.widgeeengineering.com.au/">www.widgeeengineering.com.au/</a>	<2,000



## South Australia

Business name	Website	Capacity
Ahrens Group	<a href="http://www.ahrens.com.au/">www.ahrens.com.au/</a>	>10,000
Samaras Structural Engineers	<a href="http://samarasgroup.com">samarasgroup.com</a>	>10,000
Advanced Steel Fabrications	<a href="http://www.advancedsteel.com.au">www.advancedsteel.com.au</a>	2,000-10,000
Bowhill Engineering Pty Ltd	<a href="http://www.boweng.com.au">www.boweng.com.au</a>	2,000-10,000
Ferretti International	<a href="https://ferretti-international.com.au/">https://ferretti-international.com.au/</a>	2,000-10,000
Genis Steel	<a href="https://genissteel.com.au/">https://genissteel.com.au/</a>	2,000-10,000
Lai Group - Fabrication	<a href="http://laiswitchboards.com.au/#!/metal-fabrication">http://laiswitchboards.com.au/#!/metal-fabrication</a>	2,000-10,000
MG Engineering	<a href="https://mgengineering.com.au/">https://mgengineering.com.au/</a>	2,000-10,000
Stevens Structural	<a href="http://www.stevens-group.com.au">www.stevens-group.com.au</a>	2,000-10,000
Tali Engineering Pty Ltd	<a href="http://taliengineering.com.au">taliengineering.com.au</a>	2,000-10,000
Adelaide Steel Fabrications		<2,000
BGI Building Group	<a href="http://bgibuildinggroup.com.au">bgibuildinggroup.com.au</a>	<2,000
Coded Contracting Pty Ltd	<a href="https://codedcontracting.com.au/">https://codedcontracting.com.au/</a>	<2,000
DMK Engineering Pty Ltd	<a href="http://www.dmkengineering.com.au">www.dmkengineering.com.au</a>	<2,000
Gadaleta Steel Fabrication Pty Ltd	<a href="http://www.gadaletasteel.com.au/contact.html">www.gadaletasteel.com.au/contact.html</a>	<2,000
Gant and Sons	<a href="http://www.gantandsons.com.au">www.gantandsons.com.au</a>	<2,000
GE Hughes Construction Pty Ltd	<a href="http://www.gehughes.com.au/">http://www.gehughes.com.au/</a>	<2,000
ID Fabrication	<a href="http://www.idfabrication.com.au">www.idfabrication.com.au</a>	<2,000
J.J.P & M Enterprises	<a href="https://www.ijpmenterprises.com.au/">https://www.ijpmenterprises.com.au/</a>	<2,000
JDM Steel Fabrication	<a href="http://www.jdmsteelfabrication.com">www.jdmsteelfabrication.com</a>	<2,000
JMA Engineering	<a href="http://www.jmaeng.com.au">www.jmaeng.com.au</a>	<2,000
Krueger Engineering Pty Ltd	<a href="http://www.krueng.com">www.krueng.com</a>	<2,000
Lincoln Engineers Pty Ltd	<a href="http://www.lincolnengineers.com.au">www.lincolnengineers.com.au</a>	<2,000
Macweld Industries Pty Ltd	<a href="https://macweld.com.au/">https://macweld.com.au/</a>	<2,000
Magena Fabrications	<a href="http://www.magena.com.au">www.magena.com.au</a>	<2,000
Quantum Steel Fabrications Pty Ltd		<2,000
Reimann	<a href="https://reimann.com.au/">https://reimann.com.au/</a>	<2,000
Saxon Engineering	<a href="http://www.saxonengineering.com.au">www.saxonengineering.com.au</a>	<2,000
Shakti Constructions Pty Ltd	<a href="http://www.shakticonstructions.com.au">www.shakticonstructions.com.au</a>	<2,000
Specialised Solutions Pty Ltd	<a href="http://www.specsolutions.com.au">www.specsolutions.com.au</a>	<2,000
Teks Engineering	<a href="https://www.teksengineering.com.au/">https://www.teksengineering.com.au/</a>	<2,000
Tonkin Schutz Design & Build Pty Ltd	<a href="http://www.tsdb.com.au">www.tsdb.com.au</a>	<2,000
Tri-metal Engineering Pty Ltd	<a href="http://trimetal.com.au">trimetal.com.au</a>	<2,000
Williams Metal Fabrication Pty Ltd	<a href="http://www.williamsmetalfab.com">www.williamsmetalfab.com</a>	<2,000
Wingfield Structural Pty Ltd	<a href="http://www.wingfieldstructural.com.au">www.wingfieldstructural.com.au</a>	<2,000
Woods Constructional Engineers	<a href="https://woodscon.net.au/">https://woodscon.net.au/</a>	<2,000

## Victoria

Business name	Website	Capacity
Genis Steel (Vic)	<a href="http://www.genissteel.com.au">www.genissteel.com.au</a>	>10,000
Keppel Prince Engineering	<a href="http://www.keppelprince.com">www.keppelprince.com</a>	>10,000
ArcStructural	<a href="http://www.arcstructuralsteel.com.au">www.arcstructuralsteel.com.au</a>	2,000-10,000
Aus Iron Industries	<a href="http://www.ausironindustries.com.au">www.ausironindustries.com.au</a>	2,000-10,000
Best Fab Pty Ltd	<a href="http://www.bestfab.com.au">www.bestfab.com.au</a>	2,000-10,000
Continental Steel Pty Ltd	<a href="http://www.continentalsteel.com.au">www.continentalsteel.com.au</a>	2,000-10,000
Coslee Heavy Metal Fabricators Pty Ltd	<a href="https://coslee.com.au/">https://coslee.com.au/</a>	2,000-10,000
Dynamic Welding Pty Ltd		2,000-10,000
Engineering Directions	<a href="http://www.engineeringdirections.com.au">www.engineeringdirections.com.au</a>	2,000-10,000
GFC Industries Pty Ltd	<a href="http://www.gfcindustries.com">www.gfcindustries.com</a>	2,000-10,000
GVP Fabricators Pty Ltd	<a href="http://www.gvpfabricators.com.au/">www.gvpfabricators.com.au/</a>	2,000-10,000
MaddisonWright Engineering	<a href="https://maddisonwright.com.au/">https://maddisonwright.com.au/</a>	2,000-10,000
PacifiCO Structural Steel	<a href="http://www.pacificosteel.com.au">www.pacificosteel.com.au</a>	2,000-10,000
Page Steel Fabrications Pty Ltd	<a href="http://www.pagesteel.com.au">www.pagesteel.com.au</a>	2,000-10,000
Plinius Engineering Pty Ltd	<a href="http://www.plinius.com.au">www.plinius.com.au</a>	2,000-10,000
Stilcon Steel	<a href="http://www.stilcon.com.au">www.stilcon.com.au</a>	2,000-10,000
Structural Challenge Pty Ltd	<a href="http://www.structuralchallenge.com.au">www.structuralchallenge.com.au</a>	2,000-10,000
Weldtek Pty Ltd	<a href="http://www.weldtek.com.au">www.weldtek.com.au</a>	2,000-10,000
3PE Engineering Pty Ltd	<a href="http://www.3pe.com.au">www.3pe.com.au</a>	<2,000
A-Line Building Systems	<a href="https://alinebuildingsystems.com.au/">https://alinebuildingsystems.com.au/</a>	<2,000
AM Metal Solutions	<a href="http://www.ammetal.com.au">www.ammetal.com.au</a>	<2,000
Apex Welding & Steel Fabrication	<a href="http://www.apexwelding.com.au">www.apexwelding.com.au</a>	<2,000
APR Structural Steel	<a href="https://aprsteel.com.au/">https://aprsteel.com.au/</a>	<2,000
Atex Steel	<a href="https://atexsteel.com.au/">https://atexsteel.com.au/</a>	<2,000
Barra Steel (Vic) Pty Ltd	<a href="http://barrasteel.com">barrasteel.com</a>	<2,000
BB Truss & Timber Pty Ltd	<a href="http://www.bbtruss.com.au">www.bbtruss.com.au</a>	<2,000
BridgeCon Pty Ltd	<a href="http://www.bridgecon.com.au">www.bridgecon.com.au</a>	<2,000
Brunton Engineering & Construction	<a href="http://www.bruntenq.com">www.bruntenq.com</a>	<2,000
BWS Industries P/L	<a href="http://www.bwsind.com.au">www.bwsind.com.au</a>	<2,000
Calbah Industries	<a href="http://www.calbah.com">www.calbah.com</a>	<2,000
CPE Construction	<a href="http://www.cpeconstruction.com.au">www.cpeconstruction.com.au</a>	<2,000
Diamond Steel Engineering		<2,000
Jaeger Group	<a href="https://jaegergroup.com.au/">https://jaegergroup.com.au/</a>	<2,000
KMS Engineering	<a href="http://www.kmseng.com.au">www.kmseng.com.au</a>	<2,000
Minos Structural Engineering Pty Ltd	<a href="http://www.minosstructural.com">www.minosstructural.com</a>	<2,000
PC Mobile Welding		<2,000
R&M Engineering	<a href="http://www.rmeng.com.au">www.rmeng.com.au</a>	<2,000
R.A. Steel (Vic) Pty Ltd	<a href="http://www.rasteel.com.au">www.rasteel.com.au</a>	<2,000
SJ & TA Structural Pty Ltd	<a href="http://www.sjta.com.au">www.sjta.com.au</a>	<2,000
Skrobar Engineering Pty Ltd	<a href="http://skrobareng.com.au">skrobareng.com.au</a>	<2,000
Steelwork Bendigo Pty Ltd	<a href="http://www.steelworkbendigo.com">www.steelworkbendigo.com</a>	<2,000
Sutcliffe Engineering Pty Ltd	<a href="http://www.sutcliffe.com.au">www.sutcliffe.com.au</a>	<2,000
Third Angle Engineering Pty Ltd	<a href="https://thirdangle.com.au/">https://thirdangle.com.au/</a>	<2,000
Variset Pty Ltd	<a href="http://www.variset.com.au">www.variset.com.au</a>	<2,000
Westys Steel	<a href="http://www.westys.com.au">www.westys.com.au</a>	<2,000
Williams Steel	<a href="http://www.williamssteel.com.au">www.williamssteel.com.au</a>	<2,000

## Western Australia

Business name	Website	Capacity
Civmec Construction and Engineering Pty Ltd	<a href="http://www.civmec.com.au">www.civmec.com.au</a>	>10,000
Fremantle Steel Fabrication Co.	<a href="http://www.fremantlesteel.com.au">www.fremantlesteel.com.au</a>	>10,000
Pacific Industrial Company (PIC)	<a href="http://www.pacind.com.au">www.pacind.com.au</a>	>10,000
Alltype Engineering Pty Ltd	<a href="http://www.alltypeengineering.com.au">www.alltypeengineering.com.au</a>	2,000-10,000
Cays Engineering	<a href="http://www.cays.com.au">www.cays.com.au</a>	2,000-10,000
Chess (WA) Pty Ltd	<a href="http://www.chessindustries.com.au">www.chessindustries.com.au</a>	2,000-10,000
Italsteel W.A.	<a href="http://www.italsteel.com.au">www.italsteel.com.au</a>	2,000-10,000
Metro Steel Fabrication	<a href="http://www.metrosteelwa.com.au">www.metrosteelwa.com.au</a>	2,000-10,000
National Lintels	<a href="http://www.nationalsteel.com.au">www.nationalsteel.com.au</a>	2,000-10,000
WA Cutting Services	<a href="http://www.wacutting.com.au">www.wacutting.com.au</a>	2,000-10,000
West Australian Steel Sales	<a href="http://www.wasteel.com.au">www.wasteel.com.au</a>	2,000-10,000
Acute Fabrication Pty Ltd	<a href="http://www.acutefabrication.com.au">www.acutefabrication.com.au</a>	<2,000
AD Coote & Co. (Sheetmetal) Pty Ltd	<a href="https://adcoote.net.au">https://adcoote.net.au</a>	<2,000
Arch Engineering	<a href="http://www.archengineering.com.au">www.archengineering.com.au</a>	<2,000
Austline Fabrications	<a href="http://www.tfggroup.com.au">www.tfggroup.com.au</a>	<2,000
Brian Fisher Fabrications	<a href="http://www.brianfisherfabrications.com.au">www.brianfisherfabrications.com.au</a>	<2,000
Enviro Infrastructure Pty Ltd	<a href="https://evigroup.com.au">https://evigroup.com.au</a>	<2,000
Falcon Engineering 95 Pty Ltd	<a href="http://www.falconeng95.com.au">www.falconeng95.com.au</a>	<2,000
Gen X Engineering Pty Ltd	<a href="http://genxengineering.com.au">http://genxengineering.com.au</a>	<2,000
Hotweld Fabrication Pty Ltd	<a href="https://hotweld.com.au">https://hotweld.com.au</a>	<2,000
In-situ Construction and Maintenance	<a href="http://www.in-situ.com.au">www.in-situ.com.au</a>	<2,000
Jasmat Steel Fabrications	<a href="http://jasmat.com.au">http://jasmat.com.au</a>	<2,000
Kimberley Manufacturing Pty Ltd	<a href="http://www.kmpl.com.au">www.kmpl.com.au</a>	<2,000
Lighthouse Engineering	<a href="http://lighthouseengineering.com.au">http://lighthouseengineering.com.au</a>	<2,000
Meneghello Steel Pty Ltd	<a href="http://www.meneghello.com">www.meneghello.com</a>	<2,000
Metro Sheetmetal and Fabrication	<a href="http://www.metrosheetmetal.com.au">www.metrosheetmetal.com.au</a>	<2,000
Murray Engineering Group Pty Ltd	<a href="http://www.murrayengineering.com.au">www.murrayengineering.com.au</a>	<2,000
Rollwell Engineering Pty Ltd	<a href="http://www.rollwell.com.au">www.rollwell.com.au</a>	<2,000
Scenna Constructions	<a href="http://www.vectorlifting.com.au">www.vectorlifting.com.au</a>	<2,000
Steelweld Fabrication	<a href="http://www.steelfabricationperth.com.au">www.steelfabricationperth.com.au</a>	<2,000
Unique Metals Fabrication	<a href="http://www.uniquemetalworks.net">www.uniquemetalworks.net</a>	<2,000

## Tasmania

Business name	Website	Capacity
Haywards Steel Fabrication & Construction	<a href="http://www.haywards-steel.com">www.haywards-steel.com</a>	>10,000

## Australian Capital Territory

Business name	Website	Capacity
Baxter Engineering Pty Ltd	<a href="http://www.baxterengineering.com.au">www.baxterengineering.com.au</a>	2,000-10,000
Oz Metalwork Pty Ltd	<a href="http://www.ozmetalwork.com.au">www.ozmetalwork.com.au</a>	<2,000
Renrow Steel and Fabrication Pty Ltd	<a href="https://renrow.com.au">https://renrow.com.au</a>	<2,000

## Northern Territory

Business name	Website	Capacity
B&B Steel		<2,000
Jakes Steel & Welding Pty Ltd	<a href="http://www.jakessteel.com.au">www.jakessteel.com.au</a>	<2,000
PH Welding	<a href="http://www.phwelding.com.au">www.phwelding.com.au</a>	<2,000

## 5.E. Construction Modelling

Construction modelling or detailing is closely associated with Building Information Modelling (BIM). BIM uses three-dimensional, real-time, dynamic building modelling software to increase productivity in building design and construction, taking account of building geometry, spatial relationships, geography as well as quantities and properties of building materials.

Australian detailers are widely sought after and internationally recognised for application of advanced technologies and tight management with established relationships built from work in the US, Canada, East Asia, the UK and Africa. Benefits that have been realised from Australian detailers contributing to large resource infrastructure projects include:

### Project schedule and cost savings

Australian-based detailers keep projects on-time and on-budget through:

- Parallel managing of design and modelling stages.
- Delay mitigation during modelling ahead of construction.
- Project efficiencies through use of advanced BIM systems.
- Construction efficiencies by developing designs that avoid extra rework.
- Applying powerful multidiscipline inspection and clash detection tools.
- Achieving efficiencies through optimising use of datacentric information.
- Maximising workloads offsite.
- Using BIM tools to mitigate construction issues like RFI management.

### Improved safety

Australian detailers enhance safety during project developments by:

- Employing visualisations for training, inductions, construction sequencing and project scope to anticipate potential site hazards.
- Minimising onsite work commotion by maximising offsite preassembly.
- Deploying powerful intelligent multi-disciplined clash detection to ensure better design for more responsible construction and operating plant.

## Environmental care

Steel detailers in Australia help to safeguard the environment through:

- Better planning that reduces site needs for lay-down areas.
- Facilitating improved site handling and less material wastage.



## Experience and quality

Australian detailers are typically independent dedicated specialists who bring a higher level of expertise than a typical detailer associated with a fabricator. They generally have a higher level of industry experience due to the high portion of resource projects than commercial type work and this experience provides resource clients with risk mitigation by providing a more professional design verification process.

With close familiarity with advanced 3D systems, Australian detailers mitigate delays and site rectification costs.

With modularisation becoming more popular, steel supply and fabrication is typically falling on the critical path and owners are therefore engaging detailers that have high productivity rates, efficiencies and quality to mitigate typical engineering delays and maintain schedule.

## Technology

One of the reasons why Australian detailers lead the implementation of BIM technologies is due to their advanced knowledge of various 3D modelling technologies as required to maintain a competitive edge against low-cost centres.

### EG: *Iconstruct*

*Iconstruct* was developed by PDC Consultants of WA with detailing skills covering pipework, heavy mechanical equipment, conveyors and structures. The system provides new tool sets to project teams and consultants to manage construction information for various industry segments, from design engineers to construction managers, and integrate that intelligence into a single 3D model displayed in *Autodesk's Navisworks*. *iConstruct's* extended range of tool sets allow users to extract information that is required at different stages in the construction process. This enables better planning and more informed decisions. The information can also be extracted from the model and presented through a variety of flexible reporting tools which can then be disseminated and distributed to relevant stakeholders.

## Australian Detailer listing

Company name	State	Website
EDC Consultants	NSW	<a href="http://www.edcgroup.com.au/">http://www.edcgroup.com.au/</a>
WAI Engineering	NSW	<a href="http://www.wai.com.au/">http://www.wai.com.au/</a>
CCD Drafting Group	NSW	<a href="http://www.ccdrafting.com.au/">http://www.ccdrafting.com.au/</a>
Elmasry	NSW	<a href="http://www.elmasry.com.au/">http://www.elmasry.com.au/</a>
Jem Drafting	NSW	<a href="http://www.jembuildingdesigns.com.au/">http://www.jembuildingdesigns.com.au/</a>
PEA	NSW	<a href="http://www.ellsmore.com.au/">http://www.ellsmore.com.au/</a>
Demcox	NSW	<a href="http://www.demcox.com.au/">http://www.demcox.com.au/</a>
Australian Steel Detailers	SA	<a href="http://www.asdetailers.com.au/">http://www.asdetailers.com.au/</a>
ICM Integrated Construction Modelling	SA	<a href="https://integratedcm.com.au/">https://integratedcm.com.au/</a>
Horncastle Drafting	SA	<a href="https://www.horncastle.com.au/">https://www.horncastle.com.au/</a>
Iron Ink Drafting	SA	<a href="http://www.ironinkdrafting.com.au/">http://www.ironinkdrafting.com.au/</a>
SASTEEL	SA	<a href="http://www.sasteel.com.au/">http://www.sasteel.com.au/</a>
Austruct	WA	<a href="http://www.austruct.com/">http://www.austruct.com/</a>
BIM Drafting	WA	<a href="https://www.bimdrafting.com.au/">https://www.bimdrafting.com.au/</a>
CDS Structural Steel Detailing	WA	<a href="http://www.structuraldetailing.com.au/">http://www.structuraldetailing.com.au/</a>
Cadds Group	WA	<a href="https://www.cadds.com.au/">https://www.cadds.com.au/</a>
Minstruct	WA	<a href="http://www.minstruct.com.au/">http://www.minstruct.com.au/</a>
Multiplan	WA	<a href="http://www.mddwa.com.au/">http://www.mddwa.com.au/</a>
PDC Group	WA	<a href="http://www.pdcwa.com.au/">http://www.pdcwa.com.au/</a>
Universal Drafting	WA	<a href="http://www.universaldrafting.com.au/">http://www.universaldrafting.com.au/</a>



Company name	State	Website
Westplan Drafting	WA	<a href="http://www.westplan.com.au/">http://www.westplan.com.au/</a>
Abel Drafting Services	TAS	<a href="http://www.abeldesign.com.au/">http://www.abeldesign.com.au/</a>
Applied	VIC	<a href="http://www.appliedsteeldesign.com.au/">http://www.appliedsteeldesign.com.au/</a>
Atex	VIC	<a href="http://www.atexsteel.com.au/">http://www.atexsteel.com.au/</a>
Baigents	VIC	<a href="http://www.baigents.com.au/">http://www.baigents.com.au/</a>
Coadata	VIC	<a href="https://coadata.com.au/">https://coadata.com.au/</a>
Ingen	VIC	<a href="http://www.ingen3d.com.au/">http://www.ingen3d.com.au/</a>
NV	VIC	<a href="http://www.nvdrafting.com.au/">http://www.nvdrafting.com.au/</a>
Planit	VIC	<a href="http://www.planitdesign.com.au/">http://www.planitdesign.com.au/</a>
Steelforce	VIC	<a href="http://www.sfis.com.au/">http://www.sfis.com.au/</a>
Van der meer	VIC	<a href="http://www.vandermeer.com.au/">http://www.vandermeer.com.au/</a>
Xtech	VIC, WA	<a href="http://www.xtechdrafting.com.au/">http://www.xtechdrafting.com.au/</a>
Barra Steel	VIC	<a href="https://www.barrasteel.com/">https://www.barrasteel.com/</a>
Newsteel Pty Ltd	VIC	<a href="http://www.newsteel.net.au/">http://www.newsteel.net.au/</a>
3D STRUCT	QLD	<a href="http://www.3dstruct.net/">http://www.3dstruct.net/</a>
BDS VirCon	QLD	<a href="http://www.bdsvircon.com/">http://www.bdsvircon.com/</a>
BIMTek	QLD	<a href="http://bimtek.com.au/">http://bimtek.com.au/</a>
Cadtech	QLD	<a href="http://www.cadtech.com.au/">http://www.cadtech.com.au/</a>
Coutts Drafting	QLD	<a href="https://www.couttsdrafting.com/">https://www.couttsdrafting.com/</a>
Draftech Designs Pty Ltd	QLD	<a href="http://www.draftechdesigns.com.au/">http://www.draftechdesigns.com.au/</a>
Draftology P/L	QLD	<a href="http://www.draftology.com.au/">http://www.draftology.com.au/</a>
Idetail 3D	QLD	<a href="https://www.idetail3d.com.au/">https://www.idetail3d.com.au/</a>
Industrial Design Solutions	QLD	<a href="http://www.industrialdesignsolutions.com/">http://www.industrialdesignsolutions.com/</a>
Jackson Roxborough Pty Ltd	QLD	<a href="http://jrdetailers.com.au/">http://jrdetailers.com.au/</a>
JBD Steel Detailing Pty Ltd	QLD	<a href="http://www.jbdsteeldetailing.com.au/">http://www.jbdsteeldetailing.com.au/</a>
Roberts Engineering and Drafting	QLD	<a href="http://www.robertsengineering.com.au/">http://www.robertsengineering.com.au/</a>
Steelcad Pty Ltd	QLD	<a href="http://steelcad.com.au/">http://steelcad.com.au/</a>
TD Drafting Services	QLD	<a href="http://www.tddrafting.com.au/">http://www.tddrafting.com.au/</a>
Tekcon Services Pty Ltd	QLD	<a href="https://www.tekconservices.com.au/">https://www.tekconservices.com.au/</a>



## 5.F. Hot Dip Galvanizing

Hot dip galvanizing with a history of over 180 years, commands an unrivalled reputation as a cost effective, sustainable, and efficient system of corrosion protection for steel assets. In Australia, there are examples of hot dip galvanizing that have managed to survive in the harshest conditions for over 130 years. Hot dip galvanizing is prepared off-site in controlled conditions to reduce labour costs, minimise maintenance and ensure environmental cleanliness. Lead times for hot dip galvanized structures are often significantly less than other protective coating systems. In most cases, this gives hot dip galvanizing a cheaper first cost and life cycle cost in comparison to other high-performance corrosion protection systems.

The hot dip galvanizing industry in Australia is experienced in the delivery of large infrastructure and resources projects and most of the plants offer large galvanizing baths and state-of-the-art processes by global standards. Hot dip galvanizing of steel structures for large infrastructure and process plant has become more common in recent years and this gives Australian galvanizers proven expertise in the delivery of such projects. The industry is active in global innovation and technology exchange through the Galvanizers Association of Australia ([GAA](#)). Members of the GAA have access to technical expertise on corrosion issues, case studies and are part of an international network. The GAA can also supply estimates on durability through their on-line and free durability estimator. All of this backup can be utilised by project managers and asset owners in the delivery of their projects. GAA members can provide end users and specifiers access to the independently accredited industry-wide Environmental Product Declaration (EPD) for hot dip galvanized steel. This EPD provides an opportunity to improve the sustainability claims for all projects.

The services provided by the Australian hot dip galvanizing industry include assistance in the design of steelwork and detailing to meet the requirements of superior corrosion protection including the most effective methods of venting and draining work, and designing for maximum corrosion protection through initial product design.

Due to the large distances often encountered in Australia, the hot dip galvanizing industry has developed proficiency in overcoming logistical challenges. Experience in transport coupled with the geographical distribution of the hot dip galvanizing plants (including in regional areas) gives the industry outstanding coverage and capability in meeting the requirements of all major projects.

The selection of materials for use in all industries and applications requires innovative design and selection. Infrastructure assets not only need to withstand the rigours of everyday use, they also need to reduce their economic and environmental impact by reducing maintenance

and also their environmental footprint. Designers are beginning to appreciate the fact that hot dip galvanized steel is a material with superior corrosion resistance, abrasion and mechanical resistance and environmentally friendly qualities.

Hot dip galvanizing provides a robust protective finish and minimises site work and ongoing maintenance. Its robustness and ability to withstand 'rough' handling also provides security during transport that reduces or eliminates the requirement for final dressing and touch up on site to maintain corrosion protection integrity prior to erection and installation – a significant factor when dealing with the remoteness of many Australian locations. Hot dip galvanizing and steel combine to produce a cost-effective sustainable building material that is totally recyclable and which is proven through a long list of successful local case studies, along with the independently accredited EPD.

## Capability of Australian Galvanizing Industry

A conservative estimate of the capability of the Australian galvanizing industry is 67,000 tonnes per month.

This is approximately distributed regionally as below:

State	Capacity (tonnes per month)
Western Australia	12,300
South Australia / Northern Territory	5,500
Queensland	15,300
New South Wales	14,500
Victoria	19,400

## Galvanizers Directory

Listed below are the galvanizing members of the Galvanizers Association of Australia along with their location and bath sizes (length x width x depth). **Full details are available [here](#).**

Business	Location	Bath Size
<b>New South Wales</b>		
Albury Galvanizing	Jindera	9.5 x 1.5 x 2.6m
Galserv (part of Nepean Building & Infrastructure)	Yagoona	10.3 x 1.85 x 2.3m
	Coffs Harbour	8.1 x 1.38 x 1.7m
Galvatech	Padstow	9.5 x 1.5 x 2.6m
Valmont Coatings	Hexham	14.2 x 1.8 x 2.6m
	Girraween	12.5 x 1.7 x 2.4m 6.7 x 1.24 x 1.64m (centrifuge)
	Port Kembla	(depot)
Sydney Galvanizing	Prestons	Centrifuge Specialists
<b>Northern Territory</b>		
Darwin Galvanizing	Berrimah	10.5 x 1.5 x 2.6m
<b>Queensland</b>		
Australian Professional Galvanizing	Townsville	12.5 x 1.6 x 2.8m
Fero Group	Narangba	13.0 x 1.8 x 3.0m 3.0 x 1.2 x 1.5m (centrifuge)
Valmont Coatings	Carole Park	12.2 x 1.8 x 2.2m 4.5 x 1.2 x 1.6m (centrifuge)
	Pinkenba	10.2 x 1.8 x 2.2m
	Townsville	9.2 x 1.5 x 1.9m

Business	Location	Bath Size
South Australia		
Adelaide Galvanizing Industries	Cavan	9.5 x 1.3 x 2.8m
Korvest Galvanizers	Kilburn	14.0 x 1.6 x 2.2m 4.0 x 1.25 x 1.6m (centrifuge)
Tasmania		
Valmont Coatings	Launceston	6.5 x 1.05 x 1.4m
Victoria		
Furphy Galvanizing	Shepparton	8.5 x 1.5 x 2.2m
GB Galvanizing Service	Bayswater	9.5 x 1.8 x 2.6m
	Dandenong South	13.7 x 1.8 x 2.95m
Geelong Galvanizing	Corio	9.5 x 1.5 x 2.6m
Kingfield Galvanizing	Somerton	12.8 x 1.6 x 3.5m
Valmont Coatings	Campbellfield	12.5 x 2.0 x 2.95m
		6.0 x 1.2 x 1.8m (centrifuge)
Western Australia		
Fero Group	Kewdale	15.0 x 2.2 x 3.6m
		4.0 x 1.5 x 2.4m (centrifuge)
Hartway Galvanizers	Canning Vale	12.6 x 1.4 x 2.7m
	Naval Base, WA	3.5 x 1.0 x 1.8m (Centrifuge)
MGalv	Landsdale	9.2 x 1.6 x 2.7m

## 5.G. Protective Coatings

Coatings are essential to protect steel substrates from the natural process of corrosion and to ensure the design life of structures is reached with minimum maintenance, cost and risk.

Annual corrosion costs in Australia are generally accepted to be between two to five percent of Australia's GDP. According to the [Australasian Corrosion Association](#) (ACA), that cost was estimated to be around \$45 billion in 2018.

### What is Corrosion?

There are many definitions of corrosion, however, two common ones are:

*Corrosion is the deterioration of a material, (usually steel), because of a reaction with its environment.*

and

*The destruction of steel by an electrochemical process that is recognised by the formation of rust or pits.*

These two definitions bring together the idea of an *environment* and the *electrochemical process* which are fundamental in understanding corrosion in terms of why it occurs and how it can be prevented.

### Consequences of corrosion

As steel corrodes, it deteriorates as more iron oxide is produced. This causes a reduction in the steel's structural integrity in terms of its fundamental properties which make it such an ideal cost effective and reliable construction material (i.e. tensile strength, toughness and flexibility).

A good way to look at the consequence of corrosion is:

**Corrosion = Steel Metal Loss = Reduced Steel Structure Design Life**

**Steel Metal Loss = Maintenance Costs**

**Reduced Steel Structure Design Life = Potential for lost Revenue**

Consider steel constructions such as offshore structures, stadiums and bridges that must support the weight of extreme loadings and provide a safe working environment and the catastrophe of potential structural failure due to corrosion. What price has the loss of life?

This simple, very natural, electrochemical process can be very costly! The latest figures (2017) for the USA suggest that corrosion costs approx. \$590 Billion per year!

## **Specifications for Major Projects**

The onset of corrosion can be effectively controlled by a protective coating specification which outlines a paint system being a product or combination of products as well as appropriate surface preparation methodologies.

Consideration of the specifications at the early stages of a major project will assist in determining the most cost-effective coatings solutions for the life of the asset.

In selecting a coating system, it is important to understand the:

- Construction of a structure.
- Environment and location.
- Profile of the project and aesthetic requirements.
- Expected lifetime of the structure prior to first major maintenance.

To ensure correct specification and advice is received, certain Australian paint manufacturers can offer ACA and NACE International qualified personnel to minimise risk and costs associated with the potential onset of corrosion.



## **Credentials**

A credible Australian paint manufacturer should hold the following accreditations:

- Quality Management System Standard: AS/NZS 9001:2000.
- APAS Recognised Manufacturer.

- NATA Accredited Laboratory ISO/IEC 17025.
- Environmental Management System Standard: AS/NZS 14001:2004.
- Health, Safety and Environment.
- Product Stewardship.

## Product

Protective coating products should be tested to industry standards including NACE, ISO, Norsok, NSF and more. Australian manufacturers should have products which follow these standards:

**ISO 12944 Paints & Varnishes** – Corrosion Protection of Steel Structures by protective paint systems (parts 1-8). ISO 12944 is intended to assist engineers and corrosion experts in adopting best practice in corrosion protection of structural steel at new construction.

**AS 2312.1** - Guide to the protection of structural steel against atmospheric corrosion by the use of protective coatings – Part 1: Paint coatings.

Products unique for major steel projects are passive fire protection, ultra-high build epoxies, antifouling coatings, high temperature resistant systems (including under insulation), abrasive resistant coatings, tank linings, aesthetics, zinc rich coatings and maintenance coatings.

Paint products in Australia are free from lead due to local legislation.

## Maintenance and Repair

Essential maintenance painting can be a costly and disruptive process. In the oil and gas industry, structures must be adequately maintained to extend life and reduce the hazards that can result from corrosion.

A comprehensive, proactive maintenance plan which identifies priority areas and specifies maintenance systems tailored individually for the asset should be in place to minimise downtime and reduce spend over the life of a project.

## Regulatory Bodies

In Australia, there are recognised regulatory bodies that manage and assist the protective coatings industry, including:

### **Australian Paint Manufacturers' Federation (APMF)**

The APMF was established in 1947 to represent the interests of Australian paint manufacturers. It was incorporated in New South Wales in 1986. Its objectives are to:

- Advance the theory and practice of paint technology in Australia.
- Promote efficiency and safe work practices.
- Foster international cooperation and standards.
- Advance, encourage and protect the interests of its members.

### **Australian Corrosion Association Incorporated (ACA)**

The ACA is a not-for-profit, membership Association which disseminates information on corrosion and its prevention or control by providing training, seminars, conferences, publications and other activities. Ultimately to ensure corrosion is managed sustainably and cost effectively to ensure the health and safety of the community and protection of the environment and assist society to manage the impact of corrosion on asset durability.



## 5.H. Grating and Handrails

ASI members, Webforge and Nepean Building and Infrastructure, manufacture grating in numerous combinations of load bar depth and thickness, load bar pitch and cross rod pitch.

Load bearing bars incorporated in grating are produced from steel which conforms to the equivalent standards: AS3679, BS4360 Grade 43A and ASTM A36.

Steel grating is suited to many applications, from light-duty applications (maintenance floors, occasion usage), though light/medium duty applications (residential, light industrial occasional public usage), medium duty applications (mining and commercial, regular or medium industrial usage), heavy duty applications (heavy industrial, mining and trolleys and industrial equipment), and extra heavy-duty applications (frequent impact from trolleys).

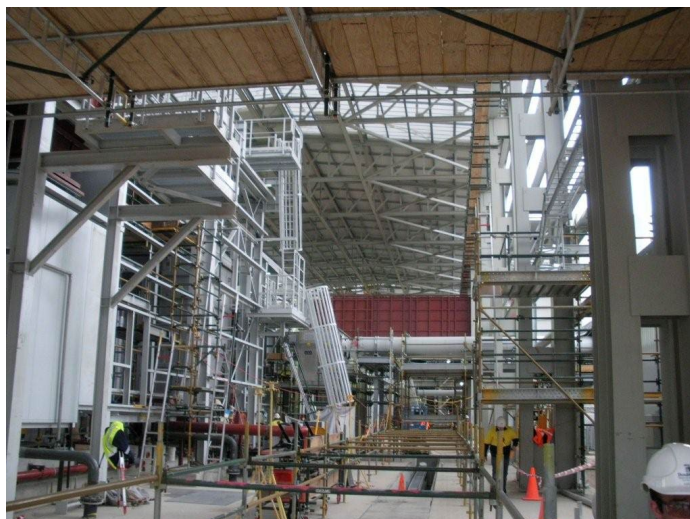
Both companies supply a complete range of mild steel grates in compliance with the load and permanent set requirements specified in AS3996. Conformance certificates can be supplied upon request. They are also capable of custom manufacturing Mild Steel Grates and Frames to suit specific client applications and load test according to AS3996 if required.

They also have an extensive range of handrail products in compliance with Australian Standards AS1657. These handrail systems can be transported and erected economically in all applications and locations. Complete systems can be supplied, including stanchions, rails, bends, kick-plates, grating and stair treads as required.

*For further information on both companies, visit:*

[www.webforge.com.au](http://www.webforge.com.au)

[www.nepean.com/](http://www.nepean.com/)



## 6. Quality and Standards

Australia's larger steel manufacturers Liberty Primary Steel, InfraBuild and BlueScope Steel have a long and proud history of manufacturing structural steel in Australia. All three steel companies manufacture product to Australian and International Standards, providing a known level of quality with full traceability.

Over the years, the Australian Standards used for structural steel design have developed, reflecting improved understanding of material performance, structural behaviour and design processes.

Sites producing steel in Australia have a quality policy to guide process control to ensure product quality. All manufacturing facilities have quality management systems accredited to ISO 9001:2008. This accreditation is actively maintained and audited, ensuring a mature and fully functional system. Manufacturers are committed to the principles of quality assurance, thereby increasing the customers' confidence of the project being delivered to the required quality standards. Steel manufacturers are active in the development of improved product, fabrication and steel design standards. AS 4100 Steel Structures, Australia's main structural steel design, fabrication and erection standard, has been developed in conjunction with the steel manufacturers.

Australian manufactured products produced to the material standards AS 1163, AS/NZS 3678, AS/NZS 3679.1 and AS/NZS 3679.2 provided the statistical data used to calibrate the capacity factors and notch toughness defined in these standards. The quality and consistency of Australian manufactured products was recognised with prequalification of these materials to allow their use in structures without additional procedures. Therefore, Australian produced structural steel is inextricably linked to the structural and materials standards used in steel design.

In welded fabrication, statistical data associated with Australian manufactured steels was used in the calibration of standard AS/NZS 1554 Structural Steel Welding (specifically Parts 1 and 5). Control and consistency of chemistry in the Australian manufactured materials allows a large range of joint configurations to be prequalified for use without or with minimal additional weld testing necessary. Both AS4100 and AS/NZS1554.1 require the verification of steels produced to other standards or sourced from other suppliers, prior to use in design and fabrication. This may require a review of statistical data provided by the manufacturer or additional testing by the fabricator.

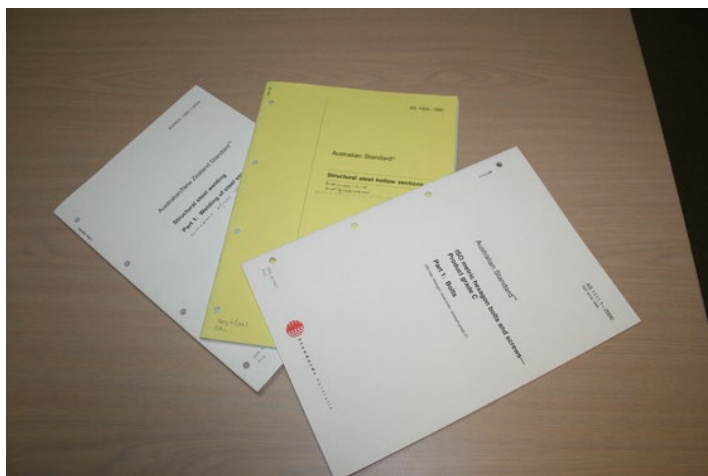
Technical expertise in standards, material, structural design and fabrication is provided by all Australian steel manufacturers. The ASI also has an extensive Library for reference and

many technical publications available from its bookshop. Assistance with specification, design and fabrication of steel products is available to members on request. Should any quality incidents arise, full technical backup of the products is provided.

All products manufactured are provided with documentary evidence of the inspection and testing performed. Laboratories used for performing these procedures have internationally recognised accreditation with the National Association of Testing Authorities (NATA) and the International Laboratory Accreditation Cooperation (ILAC). Prior to ordering, the customer can request additional testing and inspection procedures and documentation. The inspection and test documents will be supplied to the customer with the product order. In addition, the steel manufacturer archives this documentation. Products are branded with unique identification allowing traceability to the production facility linked to the manufacturing conditions for each item. All relevant product processing information is reviewed by the steel manufacturer to ensure conformance to its governing Australian Standard (as appropriate) and the results are archived for future reference.

If requested, third party product certification is available at various mills. This can incorporate factory production control (FPC) certification to ensure technical competence to produce the product and ensure continuing compliance with the provisions of the technical specification throughout the order production. FPC is a permanent internal control of production exercised by the manufacturer requiring the elements, requirements and provisions adapted by the manufacturer be documented in a systematic manner in the form of written policies and procedures. The FPC takes into account the process of the related production line from the raw material to finished product and storage of the product.

Assurance of total commitment to quality is backed up by ensuring that the manufacture of steel products is carried out in facilities with certified environmental (ISO 14001 compliance) and world-leading OH&S performance.



## National Structural Steelwork Compliance Scheme

The supply of an unacceptable degree of non-conforming, unsuitable and often-faulty building products is increasingly being seen in building, infrastructure and resources projects in Australia, ranging from small local developments to major projects involving international teams.



*Image courtesy Structural Challenge.*

A 2013 Australian Industry Group (AiG) survey reported that **95% of respondents surveyed in the steel product sector reported non-conforming product in their supply chain.**

While our Standards suite in general, and AS/NZS 5131 in particular, provide a technically sound foundation, and the National Structural Steelwork Specification (NSSS) provides a robust implementation of AS/NZS 5131 in project process, the checking and auditing of deliverables is vitally important to achieve the quality and risk-minimised outcomes our community expects and our regulatory system requires.

Unfortunately, it is not straightforward to properly check the deliverables from the steel fabrication or erection process. Documentation requirements are substantial (as would be expected) and many processes such as welding are considered ‘special processes’,

meaning the outputs cannot be readily checked without destroying the component. Hence, the inputs must be controlled and managed to ensure fit-for-purpose outcomes.

The ASI developed the **National Structural Steelwork Compliance Scheme (NSSCS)** to help manage and control the fabrication and erection process, hence ensuring fit-for-purpose deliverables. Industry association-led compliance schemes are commonplace in the UK, US, Canada and Europe. In Europe there is, in addition, a legislated mandatory construction products regulation. New Zealand has joined Australia in developing an industry-led compliance scheme based on AS/NZS 5131.

### **Scope of the NSSCS**

The ASI NSSCS is an independent third-party quality compliance and certification system for supply, fabrication and erection of structural steelwork in Australia. The technical basis for the NSSCS is founded on [AS/NZS 5131 Structural steelwork – Fabrication and erection](#) and is applicable to structures designed to AS 4100 (structural steelwork), AS 5100.6 (bridges) and supporting Australian Standards, including those for welding, bolting and corrosion protection.

### **Structure of the Scheme**

The NSSCS comprises four supporting pillars:

- AS/NZS 5131 as the technical foundation;
- Risk assessment and engineer selection of the Construction Category for the particular project;
- Conformity assessment to the requirements of AS/NZS 5131;
- Auditing and certification of fabricators to one of the [Construction Categories](#) through the separate body [Steelwork Compliance Australia \(SCA\)](#).





The NSSCS in project process

**For engineers:**

- Engineer designs the structure and creates the specification, ideally using the [NSSS](#) as template;
- Specification calls up AS/NZS 5131, Construction Category and project-specific selections.

**For fabricators and erectors:**

- Undertake a web-based audit with [Steelwork Compliance Australia \(SCA\)](#) to establish current level of conformity;
- If needed, work with ASI and accredited trainers to fill any gaps;

- Obtain SCA certification via an audit;
- Maintain certification with annual audits.



#### For builders:

- Client/builder selects fabricator, who works to requirements in AS/NZS 5131;
- Best outcomes with a fabricator independently certified by Steelwork Compliance Australia (SCA) under the NSSCS.

#### For building certifiers:

- Requires engineer to provide confirmation of review against full requirements of Australian Standards;
- Independently audits and approves basis of documentation from engineer;
- Confirms fabricator certified under NSSCS, or;
- Performs detailed review of supply chain documentation.

### **NSSCS and JAS ANZ accreditation**

Responding to market demands particularly in the Government sector, for independent accreditation of the Scheme, ASI is working towards having the Scheme accredited under [JAS ANZ](#).

## ShedSafe



ShedSafe® promotes Australian-manufactured steel products used in construction of cold-formed shed structures, such as sheds and garages and promotes steel shed industry compliance in the design, supply and construction principally of those types of structures.

This is achieved by pursuing portable building compliance with Australian Standards (Building Code of Australia) and developing documentation formats that conform to local government and certifier requirements. Achieving industry compliance is linked to improving the credibility and sustainability of the industry.

The ShedSafe was formed as a representative group for the shed industry to:

- ensure that buildings comply with all relevant Australian standards;
- improve credibility and sustainability for the steel shed industry;
- have shed designs / documentation that conform to local government requirements.

ShedSafe works towards the promotion of Australian-manufactured steel products and Australian capability in the efficient design, supply and construction of cold-formed shed structures. It provides an independent industry forum for awareness, code position representation, government lobbying, industry education and technical representation, presentations and seminars. Membership consists of a broad range of shed manufacturers, roll-forming companies and industry suppliers. ShedSafe also guarantees that members have undergone ShedSafe training and submit to regular reviews of the manufacturer's design principles and processes. More information is available at the [ShedSafe](https://www.shedsafe.com.au) website.



## 7. Welding and Testing

Welding is an economical method of joining materials, enabling transmission of large critical loads which may be static and/or dynamic under various conditions (high/low temperature, etc). The welding and related testing industry in Australia is highly sophisticated and is on par, if not exceeds the service requirements and outputs of many similar industries around the world. Industrial applications in Australia are well serviced by specialist and general welding and testing contractors including experienced and qualified structural steel fabricators, boilermakers, pressure piping and mechanical contractors. Such contractors have been successfully engaged in many and various complex and high-profile welding applications both in Australia and abroad.

Complex and economical welded fabrication has been readily achieved with Australian welding contractors. Such positive outcomes have been due to rigorous welding, certification, testing and inspection as embraced by the local industry via Standards Australia, International Institute of Welding (IIW), International Standards Organisation (ISO) and other national standards (ASME, etc). The development and utilisation of such standards has taken place for many years.

Australian welding and related testing contractors generally have third-party certification to ISO 9001 and other relative certification for their specialist areas.

The evolution of much of the welding and testing standards used in Australia are based on many years of ongoing calibration with welding and inspection processes, personnel, equipment, consumables and materials with the correlation to design assumptions. Such has been the success that should welding contractors use such standards, their testing and compliance requirements are significantly minimised.

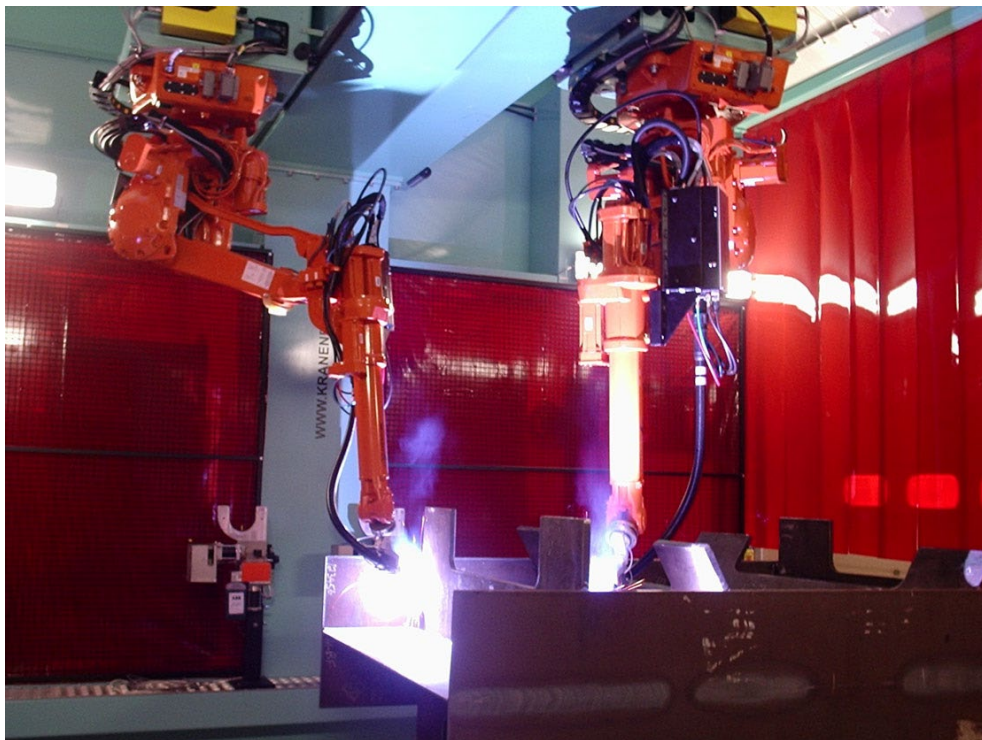
In welded fabrication, statistical data associated with Australian manufactured steels are used in the calibration of standard AS/NZS 1554 Structural Steel Welding (specifically Parts 1 and 5). Control and consistency of chemistry in the Australian manufactured materials allows a large range of joint configurations to be deemed pre-qualified for end-use without or with minimal additional weld testing necessary. Both AS 4100 (design) and AS/NZS 1554 (welding) require the verification of steels produced to other standards or sourced from other suppliers, prior to use in design and fabrication. This may require a review of statistical data provided by the manufacturer or additional testing by the fabricator. Hence, the use of Australian welding contractors and their sophisticated welding standards helps to reduce the risk of non-compliance in this area.

Further support for addressing Australian welding, testing and inspection issues can be readily obtained from the:

- Weld Australia ([WTIA](#)).
- Australian Steel Institute ([ASI](#)).
- Australian steelmaking and finished steel manufacturing companies, BlueScope Steel and InfraBuild.

This backup includes assistance in standards, materials, structural design and fabrication. Should any quality incidents arise, full technical support of the products is provided.

Coupled with cost effectiveness, embracing Australian welding and related testing contractors increases confidence in such critical areas as welding and testing. The success of the industry in such areas over many years further validates this situation.



## 8. Steel reinforcing

### About Steel Reinforcement Institute of Australia

The Steel Reinforcement Institute of Australia ([SRIA](#)) is a national non-profit organisation providing a high-quality technical support and information service to the Australian building industry on the use of reinforcing steel in concrete, primarily reinforcing bar (Rebar) and reinforcing mesh (Reomesh). SRIA is funded and supported by the vast majority of the manufacturers and suppliers of steel reinforcing used in Australian construction. The SRIA offers practical solutions to meet the diverse and ever-changing needs of the Australian building industry. The organisation actively supports and encourages the use of Australian capability and quality in the processing and use of reinforcing steel in concrete in an increasingly competitive global market.

### SRIA Processor Members

SRIA Processor Members are established Australian companies responsible for subsequent processing of reinforcing steel supplied by a steel producer in Australia or from overseas which significantly changes the shape and properties of the steel. They are processors of steel reinforcement in Australia, meet recognised technical standards and keep production and financial records. Processors provide the market with a one-stop processing shop or fabrication of steel reinforcement to AS 3600, AS 5100 and AS 2870 in compliance with the relevant Australian Standard AS/NZS 4671:2001 *Steel reinforcing materials*. Steel reinforcing is often packaged with a range of complementary products supplied by SRIA Associate members.

### SRIA Associate Members

SRIA Associate members (Accessories Suppliers, Machinery Suppliers and Steel Mills) are established Australian and International companies who have aims and objectives similar to those of SRIA. They strive for quality and compliance with the relevant standards, maintain quality assurance and implement workplace health and safety. They service Processor Members through supply of ancillary products providing the end user with a complete solution, supply of steel reinforcing feed materials to processors or processing equipment. SRIA Processor members commonly package in-house a range of Associate Member complementary products for delivery of a complete steel reinforcing solution.

## Quality Assurance and Traceability

SRIA Processor members strive for compliance with the relevant standards that apply to the reinforcement industry and this professionalism is demonstrated in one of two ways:

*a Third-Party Product Quality Certification to AS/NZS 4671 and AS 3600*

***ACRS certification will satisfy this criterion but this is not exclusive.***

*b Documented Quality Management System plus Authority Product Approvals*

***The ISO 9000 family of standards for quality management systems plus multiple product approvals from State and/or Federal Government Construction Authorities.***

## Mill Feed Materials

SRIA processors purchase their feed materials from quality Australian and overseas mills. A list of third-party accredited mills can be found at [www.acrs.net.au](http://www.acrs.net.au).

## Capability – Tonnage and Footprint

The combined industry capacity of all SRIA Processor members is in excess of 1.5 million tonnes per annum of steel reinforcing supplied into resource, engineering construction, commercial and residential projects. This comprises both cut and bent reinforcing bar or manufactured reinforcing mesh. SRIA Member companies source, schedule, process and distribute packaged solutions to meet clients' procurement strategies and project plans.

The SRIA Processor footprint spreads across all states of Australia providing a reliable and efficient just-in-time supply chain. Steel reinforcing traditionally has very short lead times measured in hours to days. Members understand the customer needs and the importance of service and delivery performance on the project plan. SRIA Members efficiently control and manage risk in reinforcement supply. Engaging the professional members of the supply chain will turn potential risk into opportunity. With early SRIA processor member involvement on major and often the more remote projects, customers can confidently build in these shorter lead times after the issuing of final construction documentation.

## Sustainability

The SRIA promotes a program of steel stewardship, seeking to engage the whole steel reinforcement supply chain in adopting more environmentally sustainable practices. SRIA Processor Members have an Environmental Sustainability Policy (ESP) encompassing the industry's environmental, social and economic performance. This is a continual process of benchmarking, monitoring and measuring progress. The SRIA has established and

maintains global networks to deliver improvement programs in responsible Best Practice to the local steel reinforcing sector.

## **Workplace Health and Safety**

The SRIA promotes industry wellbeing and a safe and healthy working environment. The SRIA records trend data and monitors national industry statistics on lost time injuries (LTIs) and medically treated injuries (MTIs), from participating Processor members. This data enables each company to compare and benchmark their safety record against the national industry values for continuous improvement of their Safety Policy or Safety Management System. Consistent improvement and performance are a reflection of the safety conscious companies the SRIA represents. The ultimate aim is to achieve an accident free workplace with zero harm to all steel reinforcing industry employees and contractors.

The SRIA National Safety Group meets quarterly around the country at member's manufacturing premises. This group comprises the Safety Managers from each member Processor company and is chaired by SRIA's Executive Director. Members work together to share their collective knowledge to ensure the member companies have a consistent approach toward a safer work environment and awareness of safety issues within the reinforcement processing industry.

## **Standards**

SRIA Processors benchmark both locally and internationally to sustain world's Best Practice across design, specification, production and supply. The SRIA Membership strives to achieve quality and continuous improvement and is actively involved in Standards Australia, with representation on the following Committees:

- BD-002 Concrete structures (AS 3600)
- WD-003 Welding of structures (AS 2214)
- BD-006 Structural design actions (AS 1170)
- BD-025 Residential slabs and footings (AS 2870)
- BD-066 Tilt-up concrete construction (AS 3850)
- BD-084 Steel reinforcing materials (AS/NZS 4671)
- BD-090 Bridge design (AS 5100)
- BD-098 Pavements

## Leaders in Reinforcing Steel Processing

Processor	Capability Details
Active Steel	<a href="http://www.activesteel.com.au/">www.activesteel.com.au/</a>
AKZ Reinforcing	<a href="http://www.akz.com.au/">http://www.akz.com.au/</a>
ARC - The Australian Reinforcing Company	<a href="http://www.arcreo.com.au">www.arcreo.com.au</a>
Ausreo	<a href="http://www.ausreo.com.au">www.ausreo.com.au</a>
Best Bar Reinforcements	<a href="https://www.bestbar.com.au/">https://www.bestbar.com.au/</a>
Bianco Reinforcing	<a href="https://www.bianco.com.au/">https://www.bianco.com.au/</a>
Mesh & Bar	<a href="http://www.meshbar.com.au/">www.meshbar.com.au/</a>
Neumann Steel	<a href="http://www.neumannsteel.com.au">www.neumannsteel.com.au</a>
InfraBuild Construction Solutions	<a href="http://www.infrabuild.com">www.infrabuild.com</a>
VicMesh	<a href="http://www.vicmesh.com.au">www.vicmesh.com.au</a>
Wire Industries	<a href="http://www.wireind.com.au/contact">http://www.wireind.com.au/contact</a>

## Leaders in Reinforcing Steel Accessories Supply

Accessories Supplier Member	Capability Details
Ancon	<a href="https://www.ancon.com.au/">https://www.ancon.com.au/</a>
aSa Australia - Applied Systems Associates	<a href="https://www.asahq.com/">https://www.asahq.com/</a>
Connolly Key Joint	<a href="https://www.connollykeyjoint.com/">https://www.connollykeyjoint.com/</a>
Danley Construction Products	<a href="https://www.danley.com.au/">https://www.danley.com.au/</a>
Erico Products Australia	<a href="https://www.erico.com/default.asp">https://www.erico.com/default.asp</a>
Modfix	<a href="http://www.modfix.com.au/">http://www.modfix.com.au/</a>
Reid Construction Systems	<a href="https://reid.com.au/">https://reid.com.au/</a>

For further information visit the SRIA website at [www.sria.com.au](http://www.sria.com.au)

## 9. Whole of industry cooperation

### Working together

The steel value chain has a long and successful history of cooperation and banding together to get the job done in the most efficient way. The value chain is strongly linked from manufacturer to distributor to fabricator as customers and suppliers, each of whom works seamlessly with the various other associated links including, engineers, architects, design detailers, painters, galvanizers, erectors and others to ensure that a solution is delivered to the satisfaction of the end-user.

The ASI has long established links with a number of key industry bodies that support the steel industry including; Engineers Australia, the Architects Institute of Australia, the Australian Industry Group, the Building Products Industry Council, and other key associations who interact with the steel industry.

The ASI and the industry in general also work closely with the trade unions that work within the steel sector including the Australian Workers Union, Australian Metal Workers Union, National Union of Workers and the Construction Forestry Mining and Energy Union.

### Building Products Industry Council

The Building Products Industry Council ([BPIC](#)) is the national body representing Australia's building product associations who support Australia's building product manufacturers and suppliers. BPIC's members and associated member companies directly employ over 200,000 Australians with more than 470,000 employed indirectly. Their collective industries are worth over \$54 billion annually to the Australian economy.

The Council's prime objective is to provide unified and coordinated representation of the building products industry to Government and regulators while providing a forum for discussion and information sharing between manufacturers.

BPIC's mission is to promote the most efficient and innovative use of building products within a nationally consistent regulatory environment and regards the Building Code of Australia as the pre-eminent national regulatory framework for building.

The Council works to fulfil this aim by sourcing and delivering practical and current industry information to regulators on behalf of its members. This industry-wide approach to responding to codes and standards helps to ensure all levels of government hear a unified voice when changes are proposed that will affect Australia's building product manufacturing and supply industries.

BPIC works to ensure the regulatory framework supports a viable and efficient building products industry in Australia, recognising that this extends beyond Australia to the global market for building materials. BPIC also encourages investment in skills formation, product development and industry research by helping to identify and remove regulatory impediments to innovation. They participate in research into technical codes, standards and regulations as well as matters of mutual interest to the building products industry. The Council is governed by a Board of Directors comprising representatives from the member organisations.



## 10. Industry Participation Plans and Local Content Procurement

Australia has a range of Federal and State Government legislative frameworks in place designed to encourage the creation of local jobs in association with major project investment. These frameworks apply principally to large government funded one-off projects such as transport infrastructure or recurrent spending on items such as public buildings e.g. hospitals, gaols, schools.

### Federal Government

#### Australian industry participation

Australian Industry Participation (AIP) requirements ensure full, fair and reasonable opportunity for Australian industry to compete for work. This includes work in major public and private projects in Australia, and procurements or projects receiving Australian Government funding of \$20 million or more.

The [Australian Industry Participation National Framework](#) commits the Australian Government and state and territory governments to adopting a consistent national approach to maximise Australian industry participation in major projects in Australia and overseas. Each jurisdiction also has its own industry participation policies aimed at increasing Australian industry participation.

### Legislation

The [Australian Jobs Act 2013](#) (the Jobs Act) requires proponents of major projects with capital expenditure of \$500 million or more to provide opportunity for Australian industry to bid to supply key goods and services.

#### Australian Industry Participation Authority

The AIP Authority:

- provides guidance on the obligations under the Jobs Act, including if and when an AIP plan is required;
- can assist with development of an AIP plan;
- approves AIP plans;
- publishes AIP plan summaries;

- provides guidance on how to report against your implemented AIP plan;
- monitors and enforces compliance with the Jobs Act.

The [Guidelines for Jobs Act Compliance Monitoring and Enforcement](#) detail the compliance process.

## **Australian Industry Participation plans**

AIP plan requirements are applied to:

- [major public and private projects with capital expenditure of \\$500 million or more](#);
- [Australian Government procurements of \\$20 million or more](#);
- Australian Government grants of \$20 million or more;
- Australian Government payments of \$20 million or more to state and territory governments for large infrastructure projects;
- investments from the Clean Energy Finance Corporation and Northern Australia Infrastructure Facility of \$20 million or more.

## **State Governments**

### **New South Wales**

#### **NSW Government Small and Medium Enterprise and Regional Procurement Policy**

The policy is designed to increase participation of SMEs and regional businesses in government procurement of goods and services, **excluding construction procurement**, through a range of initiatives, including:

- Making it easier to buy from small businesses for values up to \$50,000
- Making it easier to buy from SMEs for values up to \$250,000
- Making it easier to engage SMEs to do proof-of-concept testing or outcome-based trials valued up to \$1,000,000
- Considering SME participation in all procurements valued above \$3 million through a new evaluation criteria.

### **SME First**

Where a government agency is permitted to directly purchase goods and/or services from a supplier, or directly negotiate with a supplier to provide goods and/or services, the agency must first consider purchasing from an SME. This initiative applies to all direct

procurements, including from prequalification schemes and panels, up to a maximum value of \$250,000.

### **SME and sustainability criteria**

For all procurements valued above \$3 million, agencies must include a non-price evaluation criteria of at least 15 per cent, which considers how potential suppliers will support the government's economic, ethical, environmental and social priorities of which a minimum of 10 per cent must be allocated to SME participation consistent with relevant exemptions in IPAs.

For procurements valued at less than \$3 million, where an agency seeks more than one quote, agencies are encouraged to include a non-price evaluation criteria that addresses these government priorities. The SME and sustainability criteria must be applied to all government procurement arrangements where the total cost is estimated to be more than \$3 million.

## **Queensland**

### **Queensland Government Charter for Local Content**

This charter aims to provide all businesses with full, fair and reasonable opportunities to tender for Queensland Government procurements. The [Queensland Charter for Local Content](#) and [Agency Guidelines](#) are designed to support government agencies to incorporate the principles of the charter into their procurement processes and procedures. Additionally, the Queensland Charter for Local Content [Tenderers Guidelines](#) has been designed to assist managing contractors delivering projects for the Queensland Government that fall within the charter.

### **Local Benefits Test**

This forms part of Queensland Government Procurement Policy and is administered by the Queensland Department of Housing & Public Works. The [Queensland Government Procurement Strategy](#) provides more details.

## **South Australia**

### **Industry Participation Policy**

The [South Australian Industry Participation Policy](#) (SAIPP), which was revised in March 2018, is the high-level framework for delivery of the requirements of section 4 of the Industry Advocate Act 2017 including promoting:

- government expenditure that results in economic development for South Australia;
- value for money in public expenditure;
- the economic development of the steel industry and other strategically important industries for South Australia; and
- capable businesses based in South Australia being given full, fair and reasonable opportunity to tender and participate in government contracts.

The Policy has effect on the following Government of South Australia expenditure:

- Procurement of goods and services including infrastructure and construction.
- Public Private Partnership projects to which the SA Government is a party.
- Federally-funded infrastructure and construction projects managed by the Government of South Australia.
- Private sector projects receiving significant Government of South Australia monetary support or value-in-kind.
- Grants to the private sector.

### **Steel Industry Plan**

The SA Steel Industry Plan was created in 2017. The key elements of the SA Steel Plan under the SAIPP are:

- All steel content must meet Australian Standards under ACRS (Australian Certification Authority for Reinforcing Structural steel);
- The OIA stipulate they have a steel surveillance program for Government projects;
- All steelwork fabricators must be certified to the relevant Construction Category in accord with NSSCS (SCA Compliance program);
- SA Government has mandated the use of certified Australian Standard steel in all taxpayer funded projects.

RGAs must seek at least one quote from SA based businesses for any Government procurement over \$33k. An IPP Plan needs to be completed and signed off for all projects over \$4 million.

## **Industry Advocate Act**

The Industry Advocate Act provides the [Industry Advocate](#) with the ability to recommend reforms to State Government procurement practices and ensure commitments made by contractors through Industry Participation Plans are acted upon. The Office of Industry Advocate (OIA) monitors compliance of the SA Steel Procurement Policy on steel purchases for State Government projects.

The Act sets out the objectives of the South Australian Industry Participation Policy and confirms the South Australian Government's commitment to the establishment and maintenance of the policy. It also establishes the Industry Advocate as a statutory position with specific functions and powers to further the objectives of the South Australian Industry Participation Policy.

## **Tasmania**

### **Industry Participation Plans**

Tasmanian Industry Participation Plans (TIPP) are strategic documents aimed at improving opportunities for local SME businesses in Government funded or resourced projects.

Agencies request suppliers to provide a TIPP when a procurement process for the purchase of goods, services or construction is valued over predetermined thresholds or where the Head of an Agency, at their discretion, has determined one is required. The threshold values apply to:

- procurements valued at over \$5 million; or
- procurements valued at over \$2 million up to, and including, \$5 million, where the Head of Agency, at their discretion, has determined that a TIPP is required.

A TIPP is also required from proponents of private sector projects valued at over \$5 million that receive support, including in-kind support, valued at or greater than \$500 000 from the Government. The Plan must be approved before the project proponent enters into relevant procurement arrangements.

Information on when a TIPP is required and approved TIPP (or executive summaries) for all agencies, including Treasury, are located on the Purchasing website at [Industry Participation Plans \(IPP\)](#)

## **Victoria**

### **Local Jobs First Policy**

The [Local Jobs First Policy](#) under the Local Jobs First Act 2003 ensures that local small and medium-sized enterprises are given the opportunity to compete for government contracts. The Minister for Industry Support and Recovery sets minimum local content requirements for Local Jobs First Strategic Projects (valued at \$50 million or above). The Minister may also set other requirements such as maximising or using a specified amount of steel products produced by local industry to deliver the project.

Bidders for Local Jobs First projects must include a Local Industry Development Plan (LIDP) to demonstrate the ability to deliver local content commitments, including any requirements set by the Minister. Compliance with the final LIDP is a requirement under the project contract. Victorian Government agencies are responsible for ongoing monitoring of LIDP commitments and associated compliance by suppliers (contractors responsible for delivering the project).

A new process is being embedded into Local Jobs First to maximise local steel industry opportunities. Where a supplier for a new or existing Strategic Project proposes changing the sourcing of local steel compared to what was listed in the LIDP, they must notify the project delivery agency before committing to the change. This may be considered a 'significant diversion'. The agency will work with the supplier to understand what is driving the change and look for solutions to maximise local steel outcomes.

For all new construction Strategic Projects, suppliers will be required to list steel packages and local steel commitments on the Industry Capability Network (ICN) Gateway, to provide the local steel industry with visibility of project opportunities. Select projects will have a requirement for suppliers to prepare a Steel Engagement Plan or Steel Sourcing Plan that will form an attachment to the LIDP, to advise the steel industry of project opportunities. For smaller projects, suppliers will be required to engage with the local steel industry.

### **Victorian Industry Participation Policy (VIPP)**

VIPP improves opportunities for local suppliers to compete for work on all types of government contracts, helping to create and sustain opportunities for Victorian businesses and workers. This policy is about local industry development. More information on how VIPP works for suppliers can be found at [www.localjobsfirst.vic.gov.au/industry-guidance/supplier-guidelines](http://www.localjobsfirst.vic.gov.au/industry-guidance/supplier-guidelines)

## **Major Projects Skills Guarantee (MPSG)**

MPSG gives focus to providing opportunities to Victorian apprentices, trainees and cadets to work on high value government construction projects. This policy is about growing the next generation of skilled workers in Victoria.

## **Western Australia**

The WA State Government's Plan for Jobs outlined a number of strategies to create a more vibrant and diversified economy during a time of transition in resource investment and slowing in the residential building sector. One of the priority strategies was to ensure the \$27 billion spent annually on State Government procurement supported local industry and retained or created new jobs for Western Australians.

To support this strategy, the *Western Australian Jobs Act 2017* (WA Jobs Act) was passed on 7 December 2017. Following this, the Western Australian Industry Participation Strategy (WAIPS) was developed to give effect to the objectives within the [WA Jobs Act](#).

Legislation which encourages the use of local industry participation, is being progressed on another of the Plan for Jobs priority initiatives in the Local Jobs Bill. The intention of this Bill is to ensure benefits from major projects within the Mining, Construction and Oil and Gas industry sectors flow through to local business, essentially creating more jobs and business opportunities for West Australians. The Bill aims to maximise local content across private sector infrastructure and resources projects within the State and will be developed in line with the principles of providing a full, fair and reasonable opportunity to WA based businesses.

A central feature of this approach will be the inclusion of Skilled Work Agreements which will outline a project's potential employment, skilling and contractual opportunities. The ASI has an MOU with the WA Government Department of Jobs, Tourism, Skills and Innovation, and is well placed to assist in understanding state requirements for industry participation and local content.

## **WA Industry Participation plans**

<https://industrylink.wa.gov.au/about/western-australian-industry-participation-strategy>

There is [financial support](#) available to assist with meeting certification to the National Structural Steelwork Compliance Scheme.

# 11. Logistics

## Steel Industry Logistics Safety

### Australian Steel Industry Logistics Safety Code

The [Australian Steel Industry Logistics Safety Code \(ASI LSC\)](#) is designed to ensure that all participants are aware of their responsibilities in the supply chain when they control or influence the safe and legal carriage of freight.

The purpose of the Code is to provide guidance to the Australian Steel Industry in relation to:

- controlling, managing, operating and auditing of Heavy Vehicle road transport freight movements;
- minimising the risk along the steel supply chain associated with freight movements;
- complying with the Chain of Responsibility legislation, which imposes liability for Heavy Vehicle offences on all people and/or businesses whose actions, inactions or demands influence conduct on the road as well as on-road parties such as drivers and carriers.

### Chain of Responsibility (CoR)

The Heavy Vehicle National Law (HVNL) prescribes certain requirements and obligations to ensure compliance and safety for all parties in the transport supply chain. The Chain of Responsibility (CoR) laws within the HVNL also outline a requirement to have safety systems and controls in your operations to identify, assess and manage risks as they relate to your business and activities within the supply chain. Through a series of practical questions, the [CoR Gap Assessment Tool](#) enables you to examine your business practices and systems controls against known risks and recognised best practice.

### Australian Logistics Council

This website provides [guidance tools and links](#) including load restraint, time slot and queueing principles and other logistics-related information.



## Off-site Fabrication



Fabrication is the process used to manufacture steelwork components that will, when assembled and joined, form a complete frame or structure. The frame generally uses readily available standard sections that are purchased from the steel manufacturer or steel distributor, together with such items as protective coatings and bolts from other specialist suppliers.

Although a wide range of section shapes and sizes are produced, the designer may find that the required section size is not available. In this case, built-up plate girders may be fabricated from steel plate. Sections and plate girders may also be strengthened by stiffening the web or flanges depending upon the load to be carried.

Most modern steelwork fabrication shops have computer-aided design and detailing (CAD), which is linked directly to factory floor computer numerically controlled (CNC) machinery, creating a genuine seamless CAD/CAM environment. The accuracy of the computer-generated details being transmitted directly to the CNC machinery increases the quality standards of production. Fabrication is an important component of the evolving innovative [digital construction](#) process that is currently underway, improving speed, accuracy and safety for the complete supply chain.

## Erection



Planning for erection should start at the very beginning of the design process. Such planning should consider the construction sequence, the design factors that affect buildability and site practice in terms of typical erection plant.

In the broader design and planning context, there are three planning factors that affect the buildability of steel structures:

1. **Practical erection sequence:** the location of both temporary and permanent bracing systems or other means of maintaining structural equilibrium are crucial here;
2. **Simplicity of assembly:** simply assembled connections are the main factor here;
3. **Logical trade sequences:** which will affect the development of the master contract programme as the pre-tender plan metamorphoses into the construction plan.

Steelwork erection must also focus on workplace health and safety. The ASI has worked closely with Brookfield Multiplex to produce the [Practical Guide to Planning the Safe Erection of Steel Structures](#). This Guide sets out practical guidance for the erection of multi-element steel structures.

## **12. Work Health and Safety**

### **Overview**

Heavy industrial processes, such as many of those involved in the steel supply chain, carry with them some level of inherent risk. However, those risks are manageable and with proper process and attention to detail, the industry can move 'towards zero harm'.

The ASI believes that all injuries can be prevented and it is the responsibility of every single person in the supply chain, from those on the shop floor to those in upper management and boardrooms to exercise their duty of care to ensure that every single worker comes home safely to their families at the end of their work day.

The ASI is committed to working with our members in the steel supply chain and the industries that we serve to continually and unrelentingly improve safety performance through a range of initiatives, including the following:

- Awareness of best practice safety performance
- Promotion and reward for demonstrable improved safety outcomes
- Education and training
- Issue specific direct engagement utilising targeted safety groups
- Workplace Health and Safety alignment
- Safety alerts.

The ASI welcomes participation from industry through joining groups and providing feedback and information that will assist the supply chain to work safely together.

### **Workplace health and safety principles**

The principles we apply, and we expect the industry to apply, mirror the Worldsteel Association health and safety principles. These principles are as follows:

1. All injuries and work-related illness can and must be prevented
2. Managers are responsible and accountable for safety and health performance
3. Employee engagement and training is essential
4. Working safely is a condition of employment
5. Excellence in safety and health drives excellent business results
6. Safety and health are integrated into all business management processes.

## **Solutions and tools**

The ASI provides support to industry with a number of specific safety-related initiatives, including:

### **Steel industry logistics safety**

Loading, transport and unloading of steel and fabricated steelwork components presents challenging logistical and safety issues. The ASI has been actively involved with a range of initiatives in this area, including:

- Chain of Responsibility (CoR) legislation
- ASI Logistics Safety Guides
- Loading, unloading exclusion zones
- Australian steel industry Logistics Safety Code and Master Code
- Australian Logistics Council
- Steel transport safety network
- Logistics Safety & Environment awards.

### **National Health & Safety Committee**

The National Health & Safety Committee consists of ASI member company professionals and aims to cultivate a healthier and safer steel industry through promotion and education support. The National H&S Committee engages the State Safety groups to comment and assist with health and safety programs and activities.

### **Health and Safety Excellence Awards**

The Health and Safety Excellence Awards are an initiative of the ASI National Safety Committee to recognise steel industry companies and individuals for high achievements in health and safety, innovation in equipment and process improvements.

### **Workplace Health and Safety (WHS) Regulation**

We engage regularly with State WHS regulators and have a range of information and support material available to help you understand your 'duty of care' and the shared responsibility the steel supply chain has for safe compliant outcomes.

## 13. Environment and Sustainability

Sustainable development is a worldwide priority. Through efficient use of resources, intelligent design of products and their uses, and reduction of greenhouse emissions and water use, the Australian steel industry seeks to lower the impact of climate change.

Steel is the world's most important engineering and construction material that underpins almost every aspect of our lives – buildings, transport, infrastructure, home appliances and lifestyle goods. It can be recycled again and again.

The steel industry has made immense efforts to limit environmental pollution in the last decades. Producing one tonne of steel today requires just 40% of the energy it did in 1960 (worldsteel, 2018).

Sustainable futures are predicated on innovation. Flexibility, innovation, collaboration and communication are fundamental to an environmentally sustainable future for steel manufacturing specifically and the steel supply chain in general. Australian industry understands that it must invest in more productive and efficient practices and embrace innovation.

There are three primary focus areas that can help us move towards a true circular economy:

[Responsible steelmaking](#)

[Environmentally aware steelwork fabrication and processing](#)

[Steel as environmentally responsible design solution](#)

### Opportunities for sustainability

We have a clear mandate from our community and the opportunity to promote a cleaner and healthier environment by working together towards improving the environmental sustainability of the entire steel supply chain, from steelmaking and construction to recycling and reuse, implementing innovative technology and best practice sustainable design.

We have the responsibility to our and future generations to set in place the solutions and tools that enable improved performance and reduced environmental impact, moving towards a life cycle perspective and what we think of as a circular economy.



## Solutions and Tools

Our industry and the ASI have taken responsibility to create and provide the solutions and tools to help action the circular economy for steel and the fundamental principles of reduce, reuse, remanufacture and recycle.

Steel's natural characteristics make it a great sustainable choice in terms of its almost endless recyclability, the ability to futureproof structures to be modified or extended later, the reuse of steel sections and the option to design in high-strength steel to reduce mass, to name a few.

The ASI believes that innovation is of key importance and that we must learn and share ideas with our peers both locally and internationally. To enable sharing and cooperation among all sectors of the industry and with universities and research hubs, the ASI has underwritten the development of the new [ASI Steel Innovation Portal](#). Head to the portal and explore the many innovative steel solutions under current development that will help us move towards a more sustainable future.



## ASI Environmental Sustainability Charter

Established in collaboration with the Green Building Council of Australia (GBCA), the ASI Environmental Sustainability Charter (ESC) has been able to drive meaningful improvement in the environmental footprint of its certified steelwork fabrication companies.

The ESC was set up by the ASI in 2011 to fulfil the need to create a mechanism for construction companies to determine and identify a sustainable steelwork supplier. It also provides a tool for fabrication companies to demonstrate their commitment to reducing their environmental footprint and to work towards this in a continuous and structured way.

Charter-certified fabricators can be used in projects by regulators, environmental rating bodies like the GBCA (Green Star), state authorities such as rail and road, and any other body wanting to demonstrate environmental improvement in their project through their contracting process.

Charter membership is designed for downstream steel enterprises associated with steelwork fabrication or processing, demonstrates a company's commitment to environmental improvement and is of particular importance where a company is required to achieve an accreditation as a contractual requirement. This commitment is audited and certified once a year by an ASI nominated auditor.

Any company applying for ESC certification must operate a structural steelwork fabrication or processing facility in Australia.

A GBCA building project can gain a point towards its Green Star rating by the use of an ESC-certified steelwork fabricator (ref. GBCA Mat-5). This provides reassurance to the constructor that steelwork is being fabricated by leaders in the environmental sustainability field.



## Resources

[Infrastructure Sustainability Council of Australia \(formerly AGIC\)](#)

[Australian Life Cycle Assessment Society \(ALCAS\)](#)

[BlueScope Steel – Sustainability](#)

[BPIC – Building Products Innovation Council](#)

[Green Building Council of Australia](#)

[InfraBuild Steel – Sustainable development](#)

[Responsible Steel](#)

[Steel Construction Institute \(UK\)](#)

[Steel Recycling Institute](#)

[World Steel Association \(worldsteel\) – Sustainability](#)



## BlueScope's sustainability successes

BlueScope believes that sustainability is integral to the long-term growth of the company, and that steel plays a critical role in supporting a sustainable society. The company takes a life-cycle approach, seeking to improve the performance of its products over their entire lifecycles, with a focus on the four principles of a circular economy: reduce, reuse, remanufacture and recycle.

In 2017, BlueScope engaged with a wide cross section of its stakeholders, including investors, customers and employees, and identified five sustainability topics considered most material to its business: safety, health and wellness; climate change and energy; diversity and inclusion; governance and business conduct; and supply chain sustainability. These topics form the foundation for BlueScope's sustainability disclosure, including its annual Sustainability Report, which follows the core option of the Global Reporting Initiative (GRI).

BlueScope's Board oversees sustainability matters, with day-to-day responsibility resting with management teams. The Board has a Risk and Sustainability Committee (separate from the Audit Committee), which has oversight of the company's environmental, social and governance (ESG) responsibilities and reporting. This includes reviewing and recommending to the Board the annual Corporate Governance Statement and the Sustainability Report. The Committee also works with other Board committees to ensure sustainability matters have appropriate oversight and are integrated with BlueScope's strategy.

BlueScope has a reputation for industry leading safety performance and has maintained a Lost Time Injury Frequency Rate of less than 1.0 injury per million hours worked, for the 14 years to financial year (FY) 2018. Encouraged as it is by this performance, the company is acutely aware that people are still harmed at work, and so continues to pursue its goal of zero harm.

BlueScope supports the Paris climate change agreement and the individually determined national targets of the countries in which it operates. The company believes that climate change presents both risks and opportunities for its operations and stakeholders. It recognises that investors, customers and the communities in which it operates are increasingly demanding that the company disclose these risks and opportunities, and take action to improve its greenhouse gas emissions and energy efficiency. Accordingly, the company publicly reports in accordance with the recommendations of the Task Force on Climate-related Financial Disclosures (TCFD). BlueScope has also set a public target for the year-on-year reduction in the greenhouse gas intensity of its three steelmaking plants

globally, and is implementing a pipeline of energy efficiency projects. The company is also implementing renewable energy projects where it is commercially viable.

More broadly, the company is committed to reducing its environmental footprint by reducing consumption, reusing materials and recycling. BlueScope has found many innovative ways of creating valuable products by reusing material originally considered waste. At its Port Kembla Steelworks, the company has a 97 per cent material efficiency rate (recovery and reuse of by-products). Scrap steel (the most recycled material in the world) remains a very important raw material for its steelmaking operations, with scrap comprising about 20 per cent of the steelmaking feed at Port Kembla.

BlueScope is committed to the UN Guiding Principles on Business and Human Rights, and has undertaken a significant project to review its supply chain, and ensure that all its suppliers operate in accordance with legal requirements and the values expressed in BlueScope's company charter, *Our Bond*.

In recent years, BlueScope has increased its emphasis on diversity, focussing initially on improving gender balance. In FY2018, one in three new recruits in operating roles was female, and the company has doubled the rate of hiring women to all roles across its operations. Women comprise 33 per cent of the company's Board and Executive Leadership Team.

Many of BlueScope's products are registered under the Australian environmental product declaration program, which provides detailed information about their environmental performance, can assist in determining the environmental impact of buildings and infrastructure that use these products, and can help earn points for Green Star building projects.

## InfraBuild's and Liberty Primary Steel's environmental advances

### Sustainability at the forefront

InfraBuild and Liberty Primary Steel are committed to creating a more sustainable future for industry and society. Our innovative practices are underpinned by parent company GFG Alliances' GREENSTEEL strategy. The strategy is about promoting greater use of recycled materials, increasing the use of renewable energy and operating facilities close to key markets.

GFG Alliance has also established the [CN30 programme](#), which builds on existing GREENSTEEL (and GREENALUMINIUM) strategies, aiming to become the first carbon neutral industrial group in the world by 2030. The programme involves implementing investments in new infrastructure, renewable energy and new technologies. Australian initiatives include the Liberty Primary Steel Whyalla transformation plan utilising state of the art hydrogen steel making technology, InfraBuild higher strength steels, group investment in renewable energy assets and investments in off-site fabrication capability.

InfraBuild and Liberty Primary Steels commitment to the environment includes optimising the eco-efficiency of our products through the product life-cycle. InfraBuild is taking action by increasing resource and energy efficiencies and the use of sustainably generated energy from GFG Alliance's SIMEC Energy in the production and distribution of its products, and during the use of steel products

InfraBuild and Liberty Primary Steel's Environmental Product Declarations (EPDs) are independently verified and recognise customers' need and the increasing demand for standardisation and greater transparency around environmental performance.

InfraBuild and Liberty Steel have six EPDs:

- Hot Rolled Structural and Rail (Liberty Primary Steel)
- Hot Rolled Structural and Merchant Bar (InfraBuild Steel)
- Reinforcing Rod, Bar and Wire (InfraBuild Steel)
- Reinforcing Bar and Mesh (InfraBuild Construction Solutions)
- Reinforcing Bar and Mesh (ARC)
- Hot Rolled Structural and Merchant Bar (InfraBuild Steel Centre)

InfraBuild and Liberty Primary Steel's EPDs comply with the requirements of a valid EPD recognised in the Green Star Design Rating Tool (Green Building Council of Australia) and the IS® Rating Tool (Infrastructure Sustainability Council of Australia).

## 14. Case Studies

### Star Event Centre



Star Event Centre, Sydney: Multi-faceted geometry made possible by steel

Situated on the rooftop of The Star casino complex in Sydney and offering views over Sydney Harbour and city skyline, the Star Event Centre is notable for its complex geometry.

#### **Project Details**

**Architects:** JPW Architects

**Client:** Echo Entertainment Group

**Contractor:** Brookfield Multiplex

**Structure:** Taylor Thomson Whitting

**Steelwork Project Manager:** ICMP Steel Structures

**Steel detailer:** Elmasry Steel Design & Detailing

**Steel suppliers:** Southern Steel, BlueScope, InfraBuild

**Fabricators:** S&L Steel, Pacific Steel, Cullen Steel, Sebastian Steel

The 7,800m<sup>2</sup> event centre extends over 16 metres above the roof of the existing casino building, which was built in the mid-1990s. One of the largest construction projects undertaken in Sydney during the middle of the Global Financial Crisis, it was delivered on time and within budget.

The \$80 million complex exhibits a custom-designed glass facade that replicates the multi-faceted geometry of a gem and which can be backlit at night to create a striking light feature. The design also includes double-layered acoustic walls that meet performance requirements by absorbing high sound energy across all acoustic bands.



Principal contractor Brookfield Multiplex had a team of 35 working on the project to ensure its construction within 16 months. Among the many challenges faced were the need to install componentry in a sequenced order, a lack of storage on site requiring just-in-time delivery of materials, and the constraints of working within a confined inner-city district.

The development of the complex geometric structural steel frame meant the need for a close working relationship between builder and structural engineers Taylor Thomson Whitting (TTW). By using steel framing, TTW were able to minimise the number of columns and footings requiring strengthening. This offered two advantages: a saving in cost relative to that of strengthening a large number of columns; and, because the immediate vicinity around a column requiring strengthening must be untenanted during construction, the ability for the casino site to continue operation.

The resulting structure utilises a simple hierarchy of elements, which combine to form a steel structural box that is essentially supported on eight structural columns.

A total of 800 tonnes of structural steel was used in the construction of the centre.



## Gold Coast Light Rail



Helensvale Light Rail Station, Gold Coast: Smart, safe link between rail modes

Steelwork is the predominant material being used to construct the interchange between the Queensland Gold Coast new light rail and conventional heavy gauge railway at Helensvale for speed of erection during short railway shutdowns, aesthetics for what is expected to be a busy transit hub and to accommodate large-span requirements common to passenger rail buildings.

### **Project Details**

**Client:** GoldlinQ

**Architecture:** Cox Architecture

**Structural Engineering:** AECOM

**Steel Fabricator:** Brezac Constructions

**Steel Detailer:** INNOVATUZ

**Hot-Dip Galvanizing:** Fero, National Galvanising Industries

**Transport and Onsite Erection:** Brezac Constructions

**ASI Steel Manufacturers:** BlueScope, InfraBuild

**Steel Distributors:** BlueScope Plate Supplies, Locker Group, Lysaght, InfraBuild Steel Centre, Rhino Grating, Southern Queensland Steel, Stramit Building Products, Tekframe, Vulcan Steel

The upper roof structure comprises z-purlins spanning north to south supported by long-span continuous steel beams spanning east to west. The structure is braced to stability elements with tensile rods and SHS struts in the plane of the primary steel beams. Steel purlins are supported on the top flanges of the primary steel beams to allow cantilevering of the southern end of the roof. The lower roof is formed in lightweight steel trusses spanning east to west supported by primary steel beams spanning north to south as well as the blockwork walls of the amenities/staff building.

The overpass structure is a trussed bridge with composite steel joists supporting a concrete deck on sacrificial metal deck formwork with a lightweight steel roof. The full-height trusses were designed with a splice at quarter span and hot-dip galvanized prior to transport to site as separate sections. The bridge is supported by a concrete portal frame on the eastern side designed to resist impact loads specified by Queensland Rail (QR) and AS 5100.2-2004. It is supported on the western side by the existing QR station structure.



Given the nature of the transport hub, the overpass was also designed for collision loads. The solution was to design a heavily reinforced slab on metal formwork and spanning this between two heavy-welded WC beams either side of the overhead lines clearance zone.

Brezac Constructions' Director Peter Brezac, who manages the complete steelwork package for the project under contract, said the work is primarily driven by quality and the ability to deliver on-schedule. Brezac has supplied approximately 143 tonnes of steelwork for the project comprising steel plate, angled sections, rectangular hollow sections (RHS), universal columns and beams, welded columns and beams, pipe, mesh and purlins.

## Kurilpa Bridge, Brisbane



Kurilpa Bridge, Brisbane: New bridge to link healthy loop for legs

Brisbane's \$63.3 million steel-supported Tank Street Bridge provides the city with a pedestrian and bicycle crossing that completes a pedestrian and bicycle loop linking the CBD and South Bank via the Goodwill Bridge.

### Project Details

**Client:** Queensland Government Department of Public Works

**Architect:** Cox Rayner Architects

**Structural Engineer:** Arup

**Head Building Contractor:** Boulderstone Hornibrook

**Steel Fabricator:** Beenleigh Steel Fabrications

**Steel Detailer:** Online Drafting Service

The Kurilpa Bridge stretches from the North Quay end of Tank Street in the city to Kurilpa Point in South Brisbane, adjacent to the award-winning Queensland Gallery of Modern Art where the CBD Reach and the Milton Reach of the river meet. The multiple-mast, cable-stay design for the bridge showcases an array of cables and flying struts that have been designed to recall the ropes and spars of sailing ships.

The project's lead contractor, Boulderstone Hornibrook Queensland, designed and constructed the bridge with Cox Rayner Architects and Arup Engineers on the design team. The bridge design is based on principles of 'tensegrity', an architectural and engineering system in which the structural integrity is a synergy between balanced tension and



compression components to achieve a lightweight, yet strong and stable structure offering expansive views of the river.

Steel provided the slim-line effect in the deck to meet the many physical constraints of the original brief such as spanning the Riverside Expressway, North Quay and the Brisbane River by maintaining the minimum vehicle and maritime traffic envelopes required without obstruction.



The development embraces similar sustainability measures as the other footbridges in the 'loop', including a preference for use of recycled materials and energy-efficient, low-maintenance lighting, water recycling during construction and for landscaping, and a high-specification corrosion protection paint system to minimise maintenance. The bridge features two large viewing and relaxation platforms, two rest areas and a continuous all-weather canopy spanning the entire length of the bridge.



## 15. Acknowledgements

The ASI would like to thank the following organisations for their assistance in putting together this Steel Industry document:

- BlueScope Steel
- InfraBuild
- Galvanizers Association of Australia (GAA)
- Australasian Corrosion Association (ACA)
- Steel Reinforcing Institute of Australia (SRIA)
- Building Products Industry Council (BPIC)
- Australian Construction Modellers Association (ACMA)
- World Steel Association (worldsteel)
- Australian Bureau of Statistics (ABS)
- Australasian Certification Authority for Reinforcing and Structural Steels (ACRS)
- Australian Industry Group (ai Group)