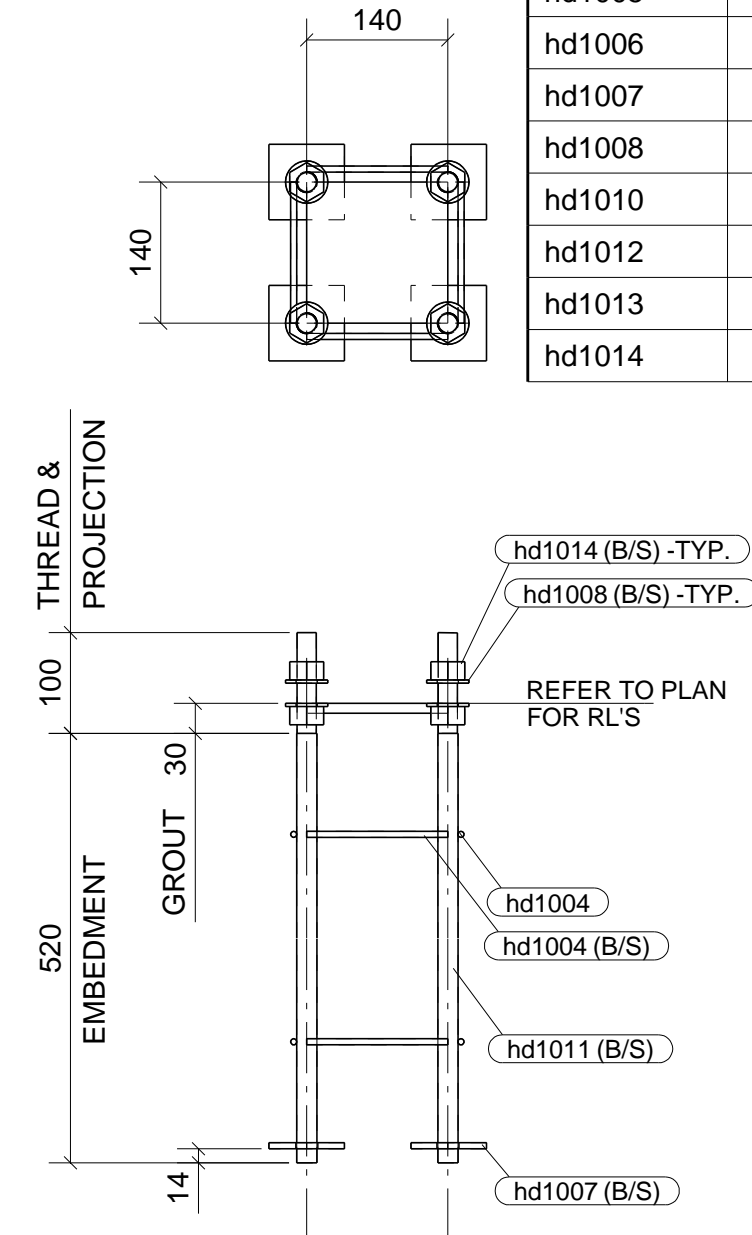
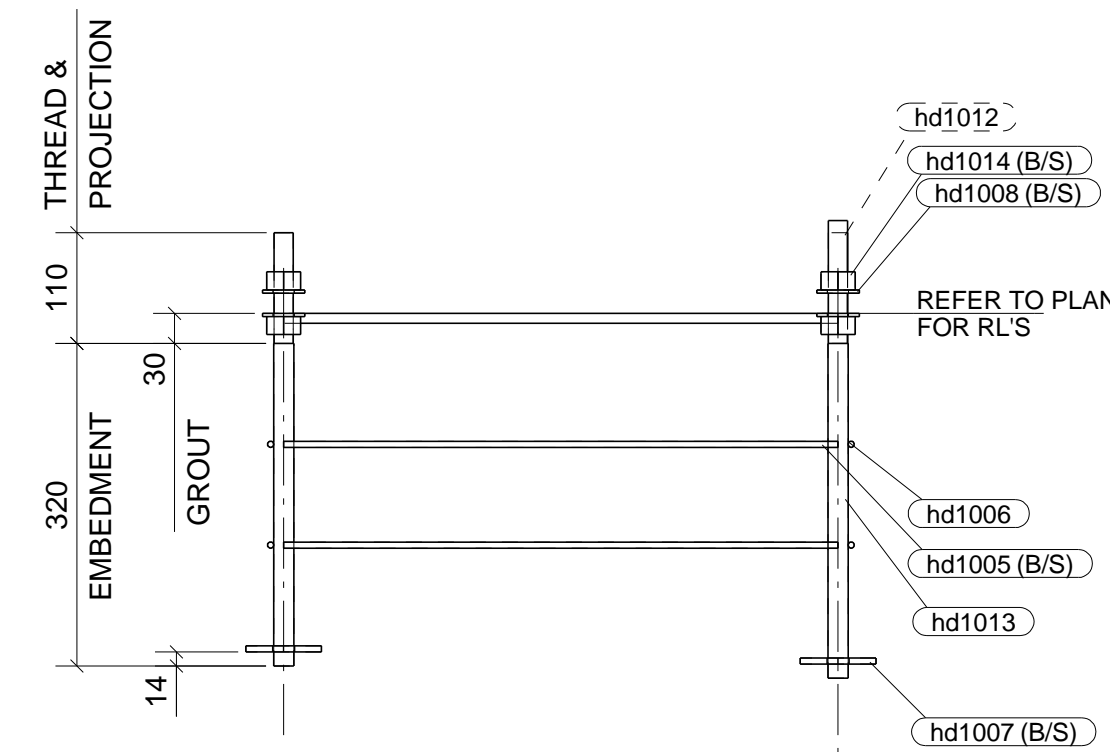


Technical drawing of a rectangular frame. The drawing shows a rectangle with dimensions 600 (width) and 300 (height). The corners are reinforced with circular elements, likely representing bolts or fasteners. The drawing is a top-down view, showing the internal structure of the frame.



Technical drawing of a rectangular frame. The drawing shows a rectangle with a width of 550 and a height of 150. The corners are reinforced with circular elements, likely representing bolts or fasteners. The drawing is a top-down view, showing the internal structure of the frame.



HD BOLT PLAN

ALL H.D. BOLT GROUPS
TO BE HOT DIP GALVANISED.
AND PASSIVATED.