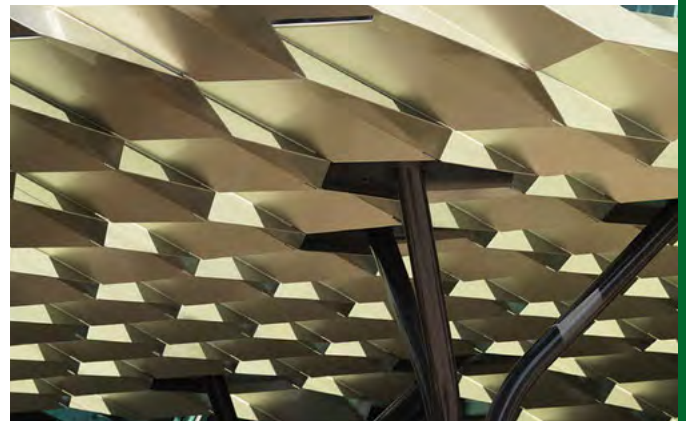
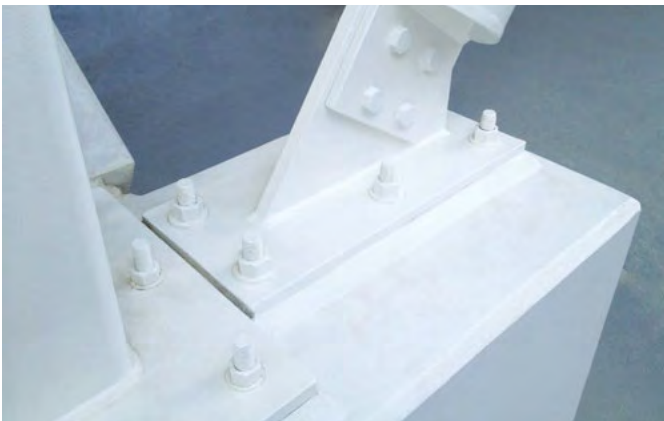




Australian steelwork corrosion and coatings guide



Second Edition 2015

Authors: **G. Charles Clifton**

Raed El Sarraf

Willie Mandeno

Peter Golding

Ann Sheehan



Australian steelwork corrosion and coatings guide

Copyright © 2015 by AUSTRALIAN STEEL INSTITUTE

Published by: AUSTRALIAN STEEL INSTITUTE

All rights reserved. This book or any part thereof must not be reproduced in any form without the written permission of Australian Steel Institute.

Note to commercial software developers: Copyright of the information contained within this publication is held by Australian Steel Institute (ASI). Written permission must be obtained from ASI for the use of any information contained herein which is subsequently used in any commercially available software package.

SECOND EDITION 2015

National Library of Australia Cataloguing-in-Publication entry:

Clifton, G. Charles, author.

Australian steelwork corrosion and coatings guide / G. Charles Clifton, Raed El Sarraf, Willie Mandeno, Peter Golding, Ann Sheehan.

ISBN 978 1 921476 39 6

Includes bibliographical references.

Steelwork-Corrosion-Australia
Protective coatings-Maintenance and repair
Corrosion and anti-corrosives-Australia

El Sarraf, Raed, author.

Mandeno, Willie, author.

Golding, Peter J., author.

Sheehan, Ann, author.

Australian Steel Institute, issuing body.

691.7

Disclaimer: The information presented by the Australian Steel Institute in this publication has been prepared for general information only and does not in any way constitute recommendations or professional advice. While every effort has been made and all reasonable care taken to ensure the accuracy of the information contained in this publication, this information should not be used or relied upon for any specific application without investigation and verification as to its accuracy, suitability and applicability by a competent professional person in this regard. The Australian Steel Institute, its officers and employees and the authors and editors of this publication do not give any warranties or make any representations in relation to the information provided herein and to the extent permitted by law (a) will not be held liable or responsible in any way; and (b) expressly disclaim any liability or responsibility for any loss or damage costs or expenses incurred in connection with this publication by any person, whether that person is the purchaser of this publication or not. Without limitation, this includes loss, damage, costs and expenses incurred as a result of the negligence of the authors, editors or publishers.

The information in this publication should not be relied upon as a substitute for independent due diligence, professional or legal advice and in this regards the services of a competent professional person or persons should be sought.



FOREWORD

'The Heavy Engineering Research Association (HERA) Report R4-133 entitled 'New Zealand Steelwork Corrosion and Coatings Guide' was prepared by Dr G. Charles Clifton of University of Auckland and Raed El Sarraf of Opus International Consultants Ltd (both formerly of HERA). This new design guide was adapted from R4-133 for use in Australia by Willie Mandeno of Opus International Consultants Ltd and was peer-reviewed by Dr Rob Francis of RA Francis Consulting Services Pty Ltd.

The sections on hot dip galvanizing have been significantly extended and enhanced from the original HERA document by Ann Sheehan and Peter Golding of the Galvanizers Association of Australia.

Additional input from a steel industry perspective with reference to ASI fabricator members has been added by David Ryan of the Australian Steel Institute.

The Australian Steel Institute (ASI) is Australia's peak steel industry association promoting Australian steel in manufacturing and construction, and representing the whole of the steel value chain including design and supply.

The technical support arm of the Institute organises events such as case study seminars and awards, and publishes journals (based on latest research), not to mention training both at industry and undergraduate level.

The technical references provided through the electronic online resources and library are proudly the best in the Southern Hemisphere and with longstanding links to global research and other steel industry associations such as the World Steel Association, the ASI can offer a truly international solution.

ASI would like to acknowledge the help of the following organisations, for their support and permission to use material from their publications.

- Heavy Engineering Research Association of NZ (HERA)
- Steel Construction New Zealand
- Galvanizers Association of Australia
- Australasian Corrosion Association

The ASI would like to thank Peter Golding (GAA), Rob Francis and Stephen Hicks (HERA) in particular for working together to make this document possible.

David Ryan

Editor

Australian Steel Institute

CONTENTS

FOREWORD	iv
LIST OF FIGURES	viii
LIST OF TABLES	x
INTRODUCTION AND SCOPE	xi
PART I: COATING SYSTEMS FOR CORROSION PROTECTION.....	1
1 Basics of corrosion and protective coatings.....	1
1.1 The corrosion process.....	1
1.2 Coating systems.....	2
2 Introduction to the Corrosion Protection Standard, AS/NZS 2312.....	6
2.1 Introduction	6
2.2 Scope of the Standard	6
2.3 Coating system designation to AS/NZS 2312 and relevant standards.....	8
3 Steps to determine an appropriate coating system.....	10
3.1 Determining the Atmospheric Corrosivity Category (ACC) of a location	11
3.2 Determining the Atmospheric Corrosivity Category for external steelwork	14
3.3 Steelwork inside buildings.....	20
3.4 Determining the expected time to first maintenance.....	25
3.5 Use of the coatings selection tables in AS/NZS 2312	29
4 Important factors for durability and coating selection.....	37
4.1 General factors.....	37
4.2 Substrate and surface condition	37
4.3 Environment (special situations)	38
4.4 Differences with shop or site application.....	38
4.5 Application method.....	38
4.6 Conditions during application	39
4.7 Surface preparation.....	39
4.8 Maintenance considerations	39
4.9 Inspection.....	39
4.10 Safety and environmental constraints.....	40
4.11 Cost.....	40
4.12 Abrasive environments.....	40
4.13 Steel to concrete interfaces	40
4.14 Preventable coating defects.....	42
4.15 Treatment of bolted connections.....	43
5 Protection of steel in non-atmospheric environments	45
5.1 Guidance in AS/NZS 2312 for non-atmospheric environments.....	45
5.2 Design corrosion rates for steel piles.....	45
PART II: PAINT COATINGS.....	47
6 Introduction to paint coatings	47
6.1 General – Surface preparation and coating specifications	47
6.2 Specification of paint systems – Check list.....	49
7 Composition of paint coatings	51
7.1 Pigments	51
7.2 Binders or resins	51
7.3 Solvents.....	51



7.4	Additives.....	52
7.5	Application conditions for paint types.....	52
7.6	Finished appearance of coatings systems.....	52
7.7	Relative cost index for a range of coatings systems.....	52
8	Description of protective paint coating systems.....	56
8.1	General.....	56
8.2	Paint coating systems.....	56
9	Determining the life cycle costing of a coating system (including the future maintenance cost for bridges and other steelwork).....	60
9.1	Introduction.....	60
9.2	Using the life cycle costing table.....	60
9.3	Life cycle costings.....	61
10	Inspection of paint coating systems before, during and after application.....	63
10.1	General.....	63
10.2	Inspection levels (surface preparation application).....	63
11	Maintenance and recoating.....	65
11.1	General.....	65
11.2	Steel surface preparation.....	66
11.3	Maintenance washing to suppress unwashed shelter effects.....	66
11.4	Repair of fire damaged coatings.....	66
11.5	Compatibility between different coating systems.....	67
11.6	Non-destructive testing for coating thickness.....	67
PART III ZINC COATINGS.....		69
12	Zinc coatings – Introduction and scope.....	69
12.1	Other environmental factors affecting zinc-coated steelwork.....	70
12.2	Types of zinc coatings.....	71
12.3	After-fabrication or batch hot dip galvanizing.....	71
12.4	Hot dip galvanizing (continuous sheet, coil, cold formed shapes).....	74
12.5	Thermal metal spray.....	75
12.6	Mechanical plating.....	77
12.7	Electro-galvanized coatings.....	77
13	Design considerations for zinc coatings.....	78
13.1	General considerations.....	78
13.2	Design for hot dip galvanizing.....	81
13.3	Design for thermal spray.....	86
14	Zinc coatings for internal steelwork.....	88
15	Protection of lintels, shelf angles and built-in steel items.....	89
15.1	Durability criteria.....	89
15.2	Specification of corrosion protection systems.....	89
15.3	Storage, handling and transport.....	90
15.4	Coating systems.....	90
16	Important factors affecting coating durability.....	91
16.1	Communication.....	91
16.2	Surface preparation and steel composition.....	91
16.3	Reactive steels (steel composition effect on coating appearance, thickness or surface smoothness).....	91
16.4	Prevention of galvanic (bimetallic/dissimilar metal) corrosion.....	93
16.5	Treatment of thermally cut edges.....	95
16.6	Shop or site application.....	96
16.7	Abrasion resistance.....	96



17	Inspection of zinc coatings	99
17.1	Zinc thermal metal spray.....	99
17.2	Continuously coated products.....	99
17.3	Hot dip galvanizing.....	99
17.4	Non-destructive testing for coating thickness	104
18	Maintenance considerations.....	106
18.1	Unwashed or sheltered areas (see also Section 3.2.3.2)	106
18.2	Specific maintenance recommendations	107
18.3	Repair of damaged galvanized steel.....	107
19	Life cycle costing of zinc-coated products.....	109
19.1	First cost vs. life cycle cost.....	109
19.2	The importance of durability.....	109
20	Standard specification for hot dip galvanizing.....	111
21	Duplex coating systems	112
21.1	Reasons for painting galvanized steel	112
21.2	Surface preparation of galvanized steel prior to painting for duplex coating	114
21.3	Selecting the right system when painting galvanized steel.....	115
21.4	Painting system options	115
21.5	Typical paints	119
22	Durability of zinc coatings in non-atmospheric environments	120
22.1	Corrosion rate in water.....	120
22.2	Corrosion rate in soil	121
22.3	Zinc coatings in contact with chemicals	122
22.4	Contact with timber	123
22.5	The life of zinc in concrete (hot dip galvanized reinforcement).....	124
22.6	Protecting the steel to concrete or ground interface	124
PART IV: REFERENCES		126
APPENDICES		
A	Generic specifications for two coatings systems	128
B	After-fabrication hot dip galvanizing specification.....	138
C	Worked examples	140



LIST OF FIGURES

Figure 1.1	The basic corrosion process	1
Figure 1.2	Types of corrosion	2
Figure 1.3	Inorganic zinc silicate layer providing sacrificial protection to the steel substrate	3
Figure 1.4	Behaviour of some different coating systems around local points of damage	4
Figure 1.5	Rust swelling around the damaged area of this paint coating	4
Figure 1.6	Breakdown of sacrificial layer	5
Figure 1.7	Breakdown of barrier coat	5
Figure 3.1	Basic steps to determine a coating system	10
Figure 3.2	Queanbeyan pool in the ACT	12
Figure 3.3	An example of airborne salinity in a sheltered situation causing premature corrosion of an otherwise well painted surface	13
Figure 3.4	Exposure to concentrated pollutants	13
Figure 3.5	Diagram of environments relating to corrosivity	13
Figure 3.6	HDG in a C5 environment	14
Figure 3.7	Calculate macro-environmental corrosion rate category	19
Figure 3.8	Evaluate micro-environment	20
Figure 3.9	Lavarack Barracks, Townsville - an example of a building where the inside of the building is nearly permanently open to the atmosphere	23
Figure 3.10	Definition of steelwork near openings in external walls	23
Figure 3.11	Use of masked HDG sections in construction of Austin Hospital extension	24
Figure 3.12	Corrosion due to prevailing wind in a car park	24
Figure 3.13	Lack of rust on the bottom flange on the internal side of the beam	25
Figure 3.14	Idealised surface profile	25
Figure 4.1	Painting of steel to concrete interfaces for long-term durability	41
Figure 4.2	Exposed girder and CHS	42
Figure 4.3	Coating delamination	42
Figure 4.4	Sharp edges accelerated onset of corrosion	43
Figure 4.5	Bimetallic corrosion	43
Figure 4.6	Bolt assembly	44
Figure 7.1	Appearance of commonly used paint systems	53
Figure 11.1	Abrasive blast removal of an existing paint system using a vacuum system	66
Figure 11.2	Measuring coating thickness	67
Figure 12.1	Gold Coast Hospital air conditioning building under construction	69
Figure 12.2	Metallic coating examples	70
Figure 12.3	Typical batch hot dip galvanizing process schematic	71
Figure 12.4	Zinc bath	72
Figure 12.5	Formation of the galvanized coating	73
Figure 12.6	The coating is at least as thick at the edge or corner because the coating grows perpendicular to the surface	73
Figure 12.7	All interior and exterior exposed surfaces are coated	74
Figure 12.8	Thermal spray diagram	75
Figure 12.9	Typical continuous zinc coating line for coiled steel	76
Figure 13.1	Welding was carried out after hot dip galvanizing and poorly maintained	80
Figure 13.2	Large beam double dipped	81
Figure 13.3	A double dip in progress showing the first dip of two	82
Figure 13.4	Maximum size for single dip	82
Figure 13.5	An example of good venting and draining design in a fence using hollow sections	83
Figure 15.1	Failed lintel	89
Figure 16.1	Shiny and dull coatings	93
Figure 16.2	Join between shiny and dull coatings	93
Figure 16.3	The basic galvanic corrosion process	93
Figure 16.4	Coating on flame cut edge (200x)	96
Figure 16.5	Coating on uncut areas (200x)	96
Figure 16.6	Hardness of each layer in a galvanized coating	97
Figure 16.7	Galvanizing for superior abrasion resistance	98
Figure 17.1	Examples of the variations in the appearance of hot dip galvanized coatings	100
Figure 17.2	Dull grey coating	100



Figure 17.3	Rust stains	101
Figure 17.4	General roughness	101
Figure 17.5	Lumpiness and runs	101
Figure 17.6	Pimples	102
Figure 17.7	Bare spots	102
Figure 17.8	Bulky white deposit	102
Figure 17.9	Dark spots	103
Figure 17.10	The Elcometer	104
Figure 18.1	Corrosion at weld	105
Figure 18.2	Poor maintenance of a paint repair	105
Figure 18.3	Poor weld repair	107
Figure 21.1	Reverie, Dandenong, Victoria	111
Figure 21.2	Desalination Plant, Sydney	112
Figure 21.3	Primer being applied over galvanizing to EG Whitlam Pool frame structure in preparation for decorative coat	113
Figure 21.4	Painted galvanized steel structure	114
Figure 22.1	Effect of water temperature on zinc corrosion	119
Figure 22.2	pH vs corrosion rate	121
Figure 22.3	Details for avoiding steel to concrete interface corrosion (1)	123
Figure 22.4	Details for avoiding steel to concrete interface corrosion (2)	124



LIST OF TABLES

Table 3.1	Comparison of ISO 9223:2012 and AS/NZS 2312.1 and AS/NZS 2312.2 of 2014 Atmospheric Corrosivity Categories	11
Table 3.2	Life to first maintenance for a selection of zinc coating systems in a range of corrosivity categories	28
Table 3.3	Zinc coating life to first maintenance for various coating thicknesses	29
Table 3.4	Durability rating – Years to first maintenance	30
Table 3.5.1	Internal steelwork – Coating required only for appearance	32
Table 3.5.2	Coatings for 15 years durability rating, Atmospheric Corrosivity Category C2	32
Table 3.5.3	Coatings for 15 years durability rating, Atmospheric Corrosivity Category C3	33
Table 3.5.4	Coatings for 15 years durability rating, Atmospheric Corrosivity Category C4	33
Table 3.5.5	Coatings for 15 years durability rating, Atmospheric Corrosivity Category C5–M	34
Table 3.5.6	Coatings for 25+ years durability rating, Atmospheric Corrosivity Category C2	34
Table 3.5.7	Coatings for 25+ years durability rating, Atmospheric Corrosivity Category C3	35
Table 3.5.8	Coatings for 25+ years durability rating, Atmospheric Corrosivity Category C4	35
Table 3.5.9	Coatings for 25+ years durability rating, Atmospheric Corrosivity Category C5-M	35
Table 3.6	Design corrosion rates for carbon steel and zinc	36
Table 7.1	Relative index for various coatings systems	54
Table 10.1	Inspection level recommended for paint coatings systems – Severity of environment	64
Table 10.2	Inspection level recommended for paint coatings systems – Extent of surface preparation	64
Table 11.1	Compatibility between maintenance and existing coatings systems	68
Table 13.1	Tolerance allowed for thickness of galvanized coating	84
Table 16.1	Coating characteristics related to steel composition	92
Table 16.2	Selected common metals in the galvanic series	94
Table 16.3	Comparative abrasion resistance	97
Table 19.1	Life cycle costing example	109
Table 22.1	Typical corrosion rate for zinc in waters	119
Table 22.2	Chemical compatibility with galvanized coatings	122

